



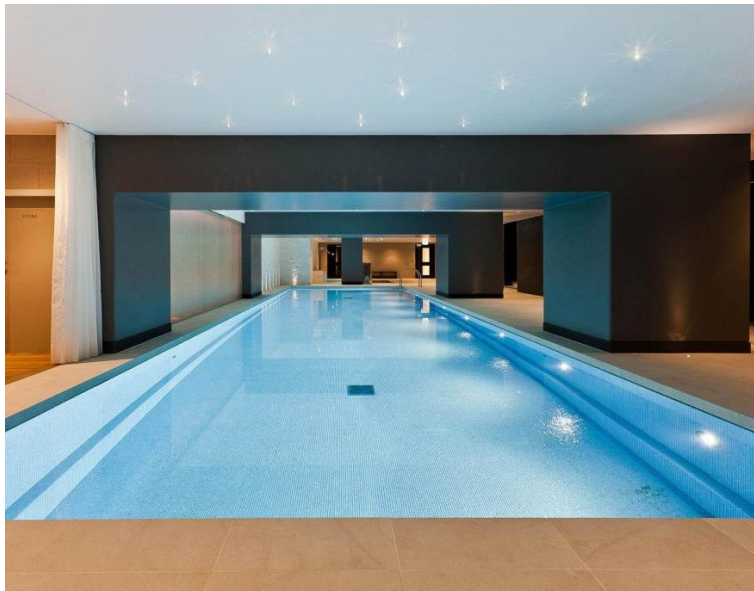
## Kensington High Street, London W14

Price £1,100 per week - Furnished









## Description

A stunning sixth floor apartment in one of London's most opulent developments in the heart of Kensington. The property comprises master bedroom with en suite bathroom, second double bedroom, one shower room, reception room and a fully fitted, open plan kitchen. The flat has been finished to the highest of standards and further benefits include a balcony, parking, a swimming pool, gym, sauna, steam room, cinema and 24 hour concierge service. Wolfe House is situated at the end of Kensington High Street with easy access to Kensington Olympia overland and High Street Kensington tube station. The open spaces of Holland Park are just a short stroll away.

Rent is payable on a monthly basis and you may be required to pay more than a month's rent in advance, depending on your circumstances. You will be required to pay a 1 week holding deposit following a successful offer. Utility bills, council tax, telephone line and broadband are not included in the rent. As well as paying the rent, you may also be required to make some additional permitted payments. If your tenancy does not qualify as an AST, additional fees may apply. Please visit [jll.co.uk/fees](http://jll.co.uk/fees) for details of fees which may be payable when renting a property.

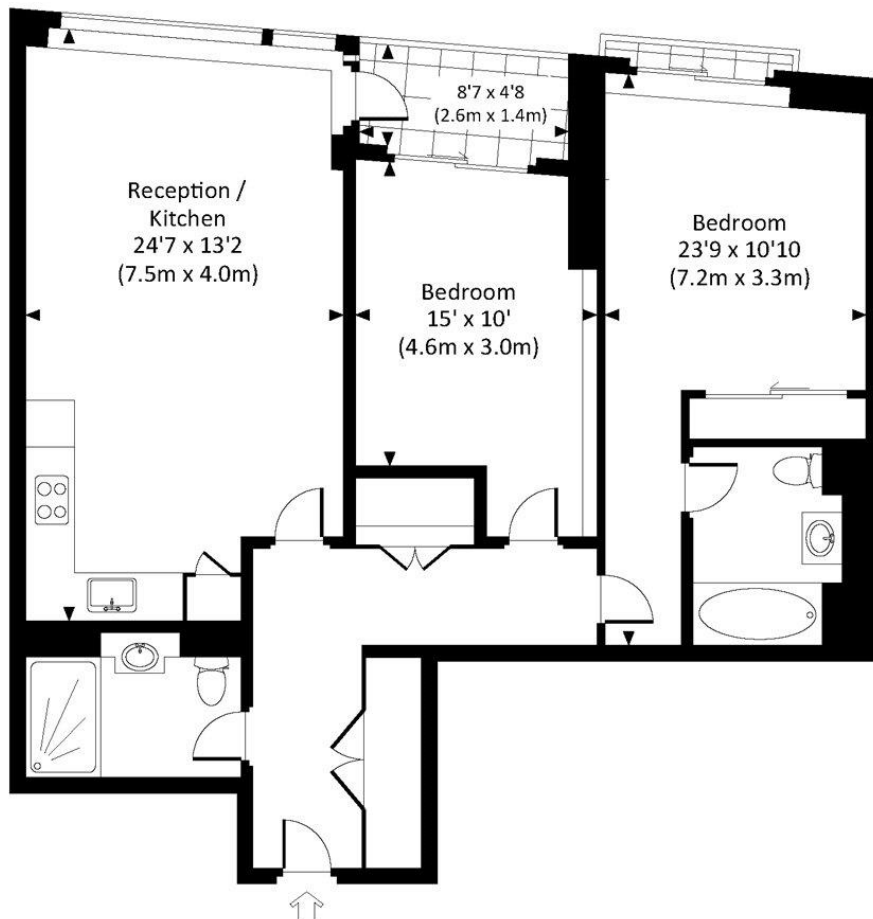
- 2 Bedrooms
- 2 Bathrooms
- 24 Hour concierge
- Gym, swimming pool, cinema
- Private balcony
- Approx 916 sq ft (85 sq m)
- Furnished
- EPC: B
- Council tax: Band G
- Deposit amount: £6,600.00

# Floorplan

916 sq ft | 85 sq m

## WOLFE HOUSE KENSINGTON HIGH STREET, W14

Approx. gross internal area  
916 Sq.Ft. / 85.1 Sq.M.



SIXTH FLOOR



All measurements have been made in accordance with RICS Code of Measuring Practice which are approximate only and only for illustrative purposes. For the avoidance of doubt, Dowling Jones Design shall not be liable for any reliance on these measurements. © 2015 www.dowlingjones.com 020 7610 9938

Kensington  
387 Kensington High Street,  
London W14 8QA  
+4420 7087 5696  
lettingskensington@eu.jll.com

*Urban living, your way.*

[jll.co.uk/residential](http://jll.co.uk/residential)

© 2019 Jones Lang LaSalle IP, Inc. All rights reserved. All information contained herein is from sources deemed reliable; however, no representation or warranty is made to the accuracy thereof.

