



Glenthorne Road, London W6

Asking price £555,000 Leasehold







Description

A modern and spacious 1 bedroom apartment with balcony situated in a secure development in Hammersmith.

Occupying the 4th floor, this property boasts an exquisite décor with attention to quality and thoughtful details.

The open-plan kitchen and living room has timeless wooden flooring that is leading out onto the delightful private balcony. The double bedroom has built-in storage and the balcony is also accessible from here. The bathroom is spacious and elegantly tiled from floor to ceiling.

The building is well-managed with a weekday concierge adding convenience and security for residents.

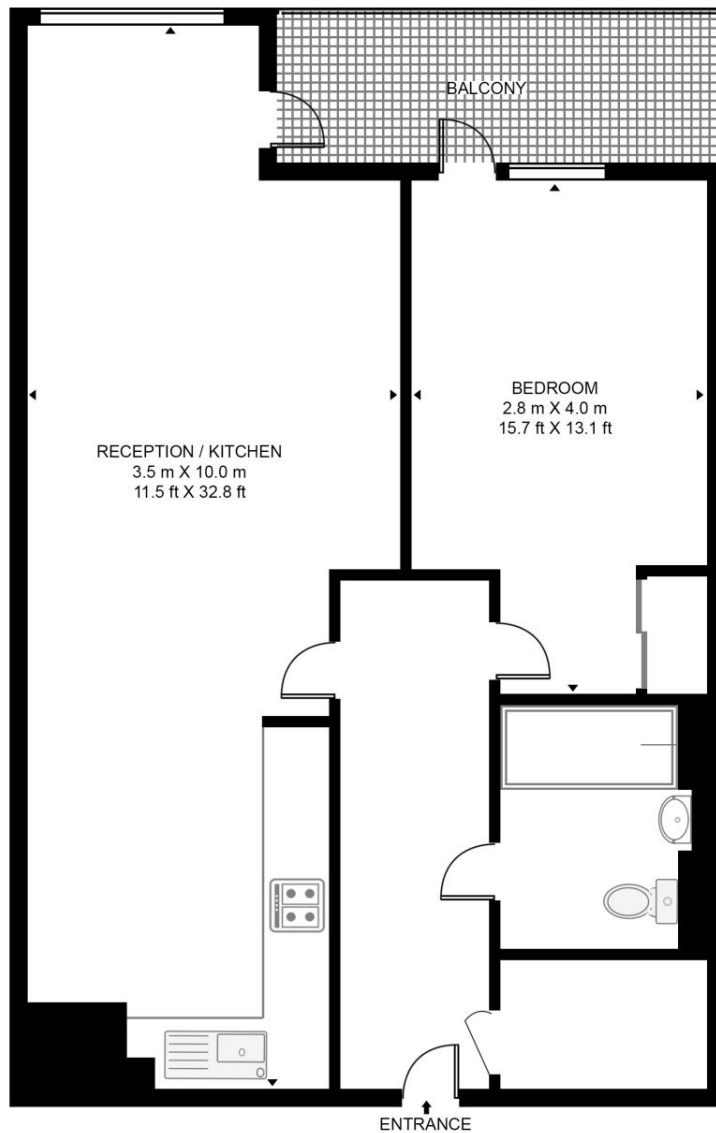
With 0.3 miles to both Hammersmith and Ravenscourt Park stations this apartment offers easy everyday commute. Just a little further away is the charming Ravenscourt Park itself with over 30 acres of beautiful gardens, open lawns, wooded areas, and a serene lake, also offering a variety of recreational facilities, including tennis and basketball courts, children's playground, and a café.

- 1 Bedroom
- 1 Bathroom
- Concierge
- Balcony
- 0.3 miles to Hammersmith and Ravenscourt Park stations
- 0.4 miles to Ravenscourt Park
- Approx 622 sq ft / 58 sq m
- EPC: B

Floorplan

622 sq ft | 58 sq m

GLENBROOK APARTMENTS, 85 GLENTHORNE ROAD
APPROXIMATE GROSS INTERNAL FLOOR AREA 622 SQ.FT (57.8 SQ.M)



FOURTH FLOOR



This floor plan has been defined by the RICS Code of Measurement. This floor plan and all others are for approximate representative purposes only and upon usage is agreed to as such by the client.
WWW: hdvirtualart.com | TEL: 0203.974.1567 | EMAIL: info@hdvirtualart.com

Kensington
387 Kensington High Street,
London W14 8QA
+4420 7087 5696
lettingskensington@eu.jll.com

Urban living, your way.

jll.co.uk/residential

© 2019 Jones Lang LaSalle IP, Inc. All rights reserved. All information contained herein is from sources deemed reliable; however, no representation or warranty is made to the accuracy thereof.

