



Kensington High Street, London W14

Asking price £1,200,000 Leasehold







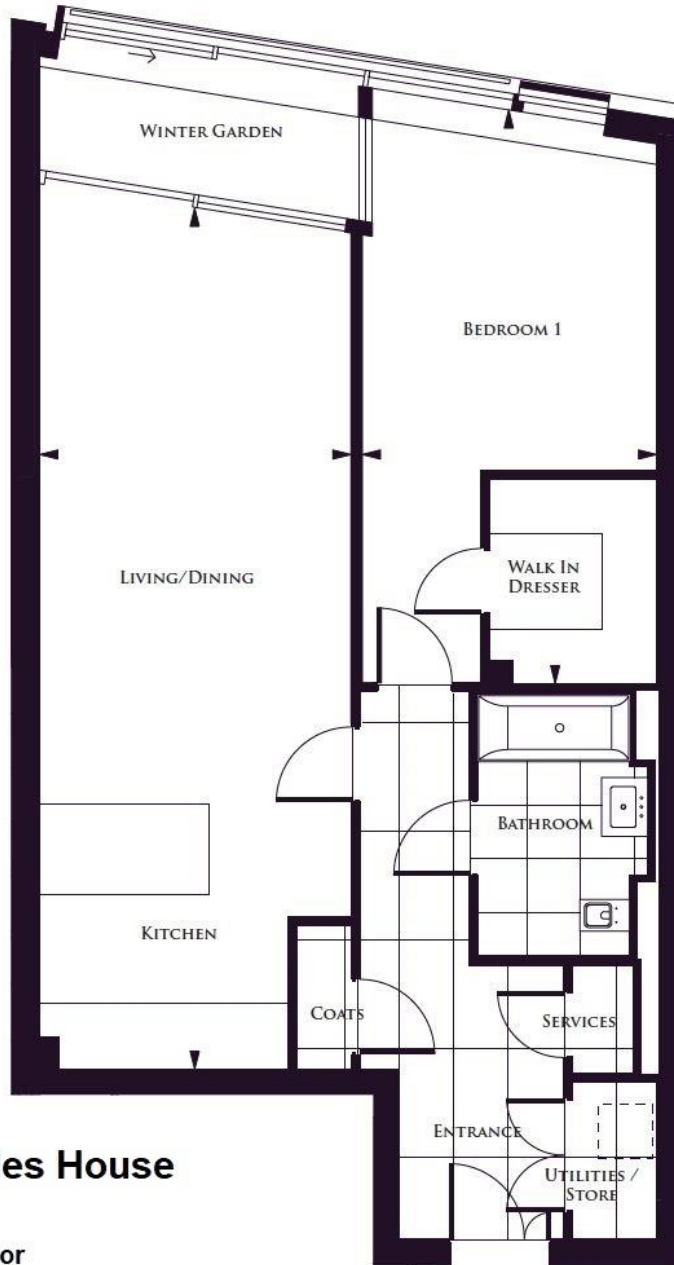
Description

Spacious 1 bedroom apartment set in the heart of one of London's most sought-after locations, the Royal Borough of Kensington and Chelsea, offers an unparalleled standard of living and convenience. The apartment comprises large open-plan living room and kitchen, double bedroom with walk-in wardrobe, bathroom and a private winter garden. Residents benefit from a use of a swimming pool and a range of fitness and spa facilities to promote the most opulent way of living. The development also features 24 hour concierge and well-maintained communal garden square.

- Kensington High Street
- 1 Double bedroom
- 1 Bathroom
- Private winter garden
- Parking space
- 24 Hr concierge
- Gym, swimming pool, cinema
- Approx 859 sq ft (80 sq m)
- EPC B

Floorplan

859 sq ft | 80 sq m



Charles House

5th Floor

TOTAL AREA	79.7 sqm	858 sqft
LIVING/DINING/KITCHEN	9525mm x 3454mm	31'3" x 11'4"
BEDROOM 1	6350mm x 3251mm	20'10" x 10'8"

Kensington
387 Kensington High Street,
London W14 8QA
+4420 7087 5696
lettingskensington@eu.jll.com

Urban living, your way.

jll.co.uk/residential

© 2019 Jones Lang LaSalle IP, Inc. All rights reserved. All information contained herein is from sources deemed reliable; however, no representation or warranty is made to the accuracy thereof.

