



## Radnor Terrace, London W14

Guide price £2,000,000 Leasehold





# Description

Luxury fourth floor apartment in the prestigious Kensington development, 375 Kensington High Street. This spacious three bedroom apartment set in the heart of one of London's most sought-after locations the Royal Borough of Kensington and Chelsea, offers an unparalleled standard of living and convenience. Property comprises three double bedrooms (one en-suite), open plan kitchen and living room and a private balcony. Key benefits include secure underground parking space, 24 hour concierge, gym, leisure suite, cinema and business suite.

- 3 Bedroom
- 2 Bathroom
- Large balcony
- Immaculate condition
- Luxury resident only facilities
- Parking
- Approx. 1124 sq ft (104 sq m)
- EPC rating B

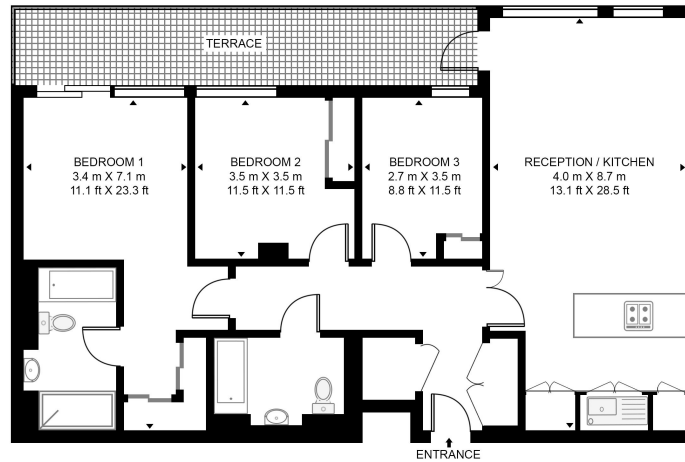


# Floorplan

1,124 sq ft | 104 sq m

## BRIDGEMAN HOUSE, 347 KENSINGTON HIGH STREET

APPROXIMATE GROSS INTERNAL FLOOR AREA 1124 SQ.FT (104.4 SQ.M)



FOURTH FLOOR



This floor plan has been defined by the RICS Code of Measurement. This floor plan and all others are for approximate representative purposes only and upon usage is agreed to as such by the client.  
WWW: [hdvirtualart.com](http://hdvirtualart.com) | TEL: 0203.974.1567 | EMAIL: [info@hdvirtualart.com](mailto:info@hdvirtualart.com)

Kensington  
387 Kensington High Street,  
London W14 8QA  
+4420 7087 5696  
[lettingskensington@eu.jll.com](mailto:lettingskensington@eu.jll.com)

*Urban living, your way.*

[jll.co.uk/residential](http://jll.co.uk/residential)

© 2019 Jones Lang LaSalle IP, Inc. All rights reserved. All information contained herein is from sources deemed reliable; however, no representation or warranty is made to the accuracy thereof.

