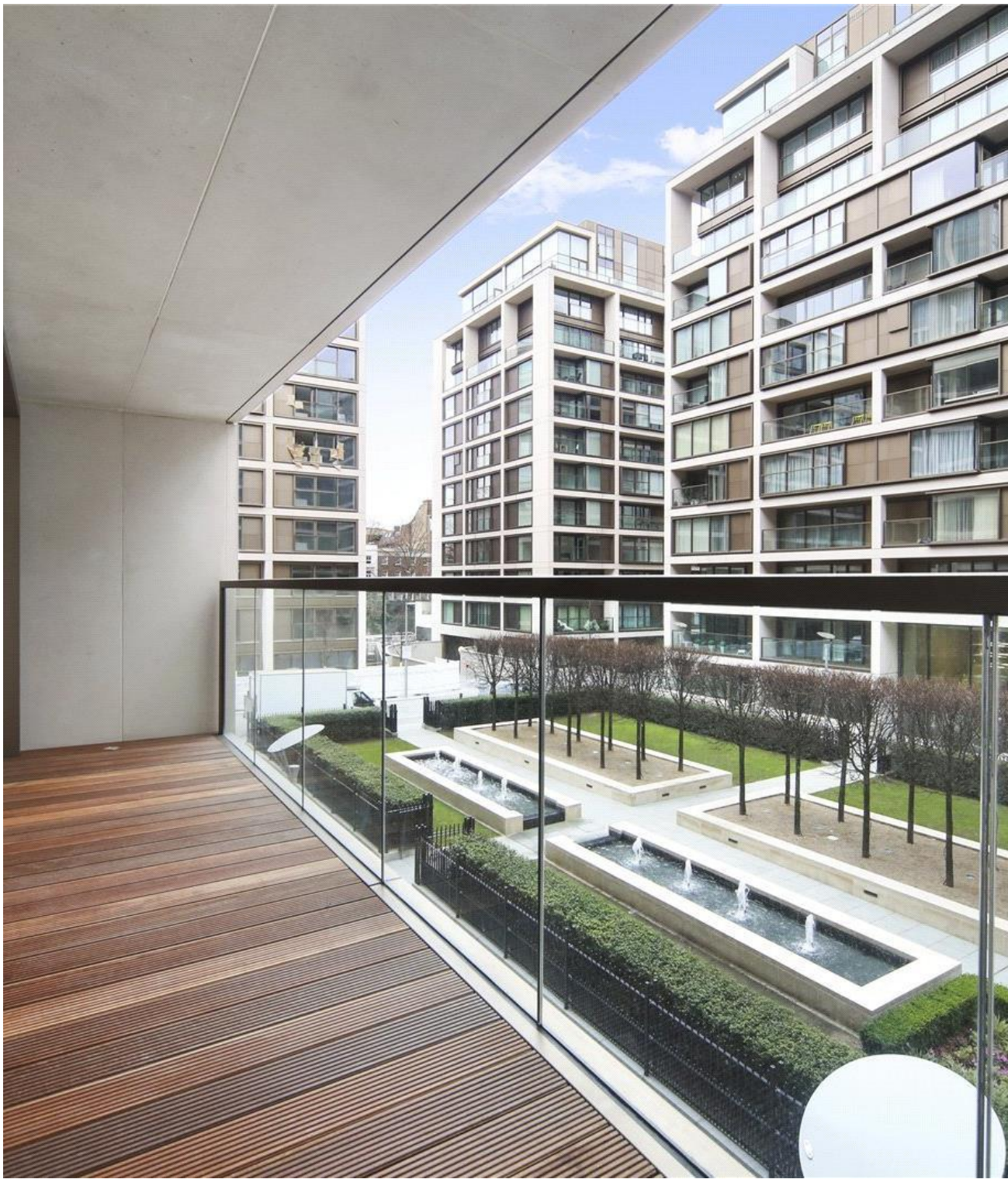




## Lord Kensington House, London W14

Guide price £1,580,000 Leasehold





# Description

A wonderful 2 bedroom apartment located on the 2nd floor of a popular modern development just off Kensington High Street. It boasts a range of desirable features including a large balcony and a private underground parking space.

The apartment comprises 2 spacious double bedrooms, one of which has an en-suite bathroom, as well as convenient storage cupboards. The open-plan kitchen seamlessly connects to the living room, creating a warm and inviting space perfect for relaxation or entertainment. The apartment is flooded with an abundance of natural light thanks to the floor-to-ceiling windows and dual aspect views. The highlight is the large wraparound balcony accessible from all rooms, providing a seamless indoor-outdoor living experience.

This residence exemplifies modern elegance and offers an array of amenities. Residents can enjoy the convenience of a 24-hour concierge, as well as access to a swimming pool, gym, steam room, sauna, cinema room, and business suite.

- 2 Bedrooms
- 2 Bathrooms
- Wrap-around private balcony
- 24 hour concierge
- Gym and spa
- Courtyard facing
- 829 sq ft / 77 sq m
- EPC B

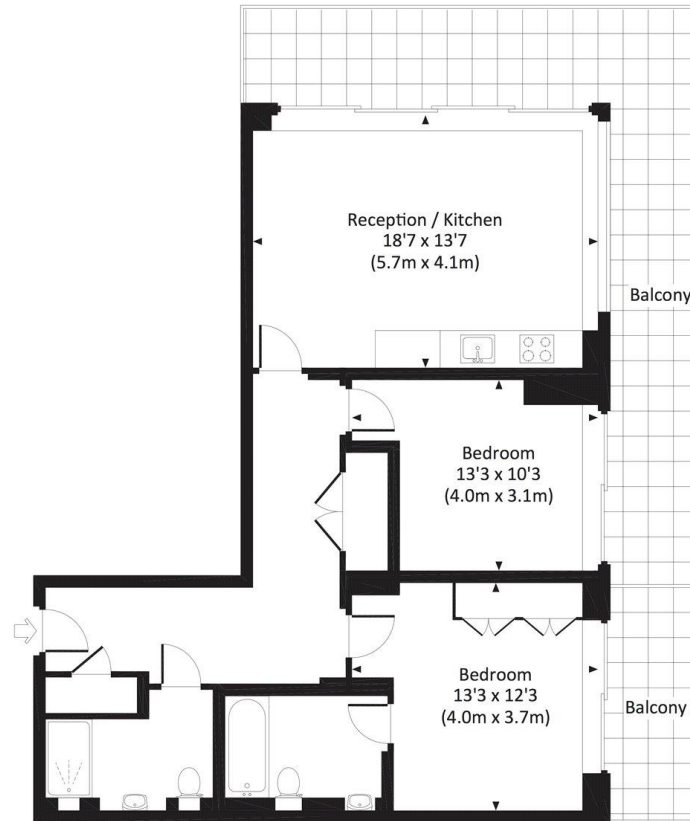


# Floorplan

829 sq ft | 77 sq m

KENSINGTON HIGH STREET, W14

Approx. gross internal area  
829 Sq Ft. / 77.0 Sq M.



SECOND FLOOR

dpd All measurements have been made in accordance with RICS Code of Measuring Practice which are approximate only and only for illustrative purposes. For the avoidance of doubt, Dowling Jones Design shall not be liable for any reliance on these measurements. © 2016 www.dowlingjones.com 020 7610 9933

Kensington  
387 Kensington High Street,  
London W14 8QA  
+4420 7087 5696  
lettingskensington@eu.jll.com

*Urban living, your way.*

[jll.co.uk/residential](http://jll.co.uk/residential)

© 2019 Jones Lang LaSalle IP, Inc. All rights reserved. All information contained herein is from sources deemed reliable; however, no representation or warranty is made to the accuracy thereof.

