



## Beadon Road, London W6

Asking price £1,100,000 Leasehold









## Description

Delighted to offer a 2 bed apartment in highly sought-after development of Sovereign court by Berkely Group. The apartment is situated on the 5th floor in this exquisite building, Lancaster House, boasting a seamless blend of functionality and style. The open plan kitchen/reception area sets the stage for entertainment with its spacious layout. There are two cozy bedrooms and two beautifully designed bathrooms, including an en suite, as well as a private balcony, where you can enjoy the city views.

The development benefits from a 24-hour concierge, residents' gym and communal gardens.

Situated 0.2 miles to both Hammersmith station offering easy commute and Ravenscourt Park known for its picturesque landscapes, lawns, and gardens, providing a peaceful and tranquil atmosphere amidst the bustling city and within half a mile to the River Thames that offers riverside walks and a variety of recreational activities.

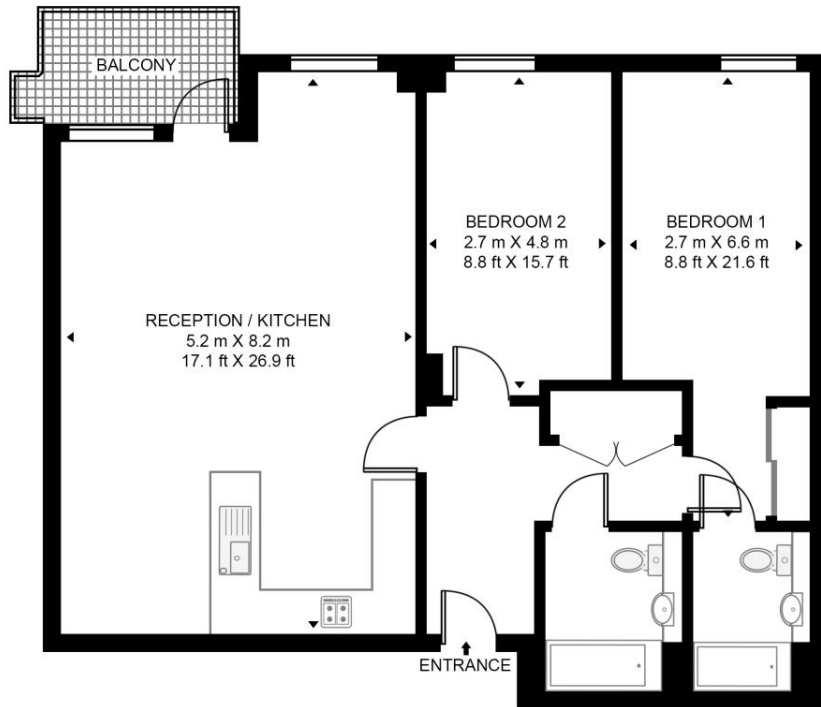
- 2 Bedrooms
- 2 Bathrooms
- Private balcony
- 24 Hr concierge
- Residents gym
- 0.2 miles to Hammersmith station
- 0.5 miles to Hammersmith Bridge and the riverbank
- 978 Sq Ft / 91 Sq M
- EPC B

# Floorplan

978 sq ft | 91 sq m

## LANCASTER HOUSE, SOVEREIGN COURT

APPROXIMATE GROSS INTERNAL FLOOR AREA 978 SQ.FT (90.9 SQ.M)



FIFTH FLOOR



This floor plan has been defined by the RICS Code of Measurement. This floor plan and all others are for approximate representative purposes only and upon usage is agreed to as such by the client.

WWW: [hdvirtualart.com](http://hdvirtualart.com) | TEL: 0203.974.1567 | EMAIL: [info@hdvirtualart.com](mailto:info@hdvirtualart.com)

Kensington  
387 Kensington High Street,  
London W14 8QA  
+4420 7087 5696  
[saleskensington@eu.jll.com](mailto:saleskensington@eu.jll.com)

*Urban living, your way.*

[jll.co.uk/residential](http://jll.co.uk/residential)

© 2019 Jones Lang LaSalle IP, Inc. All rights reserved. All information contained herein is from sources deemed reliable; however, no representation or warranty is made to the accuracy thereof.

