

# Radnor Terrace, London W14

Guide price £2,500,000 Leasehold









## Description

A beautiful penthouse on the 11th floor in the prestigious 375 Kensington High Street development by Berkeley Group. The property has been designed to the highest standard and with floor to ceiling windows, there is an abundance of natural light with amazing views from the enormous, private, wrap around terrace.

The property comprises a principle bedroom with en-suite bathroom and walk in wardrobe, second double bedroom and 2nd spacious shower room, open plan kitchen and living room, leading to the generous balcony. There are two large, privately allocated parking spaces in the secure underground car park offered with this property.

Other benefits include a sauna, steam room, swimming pool, gym, spa, cinema room, business centre and 24 hour concierge.

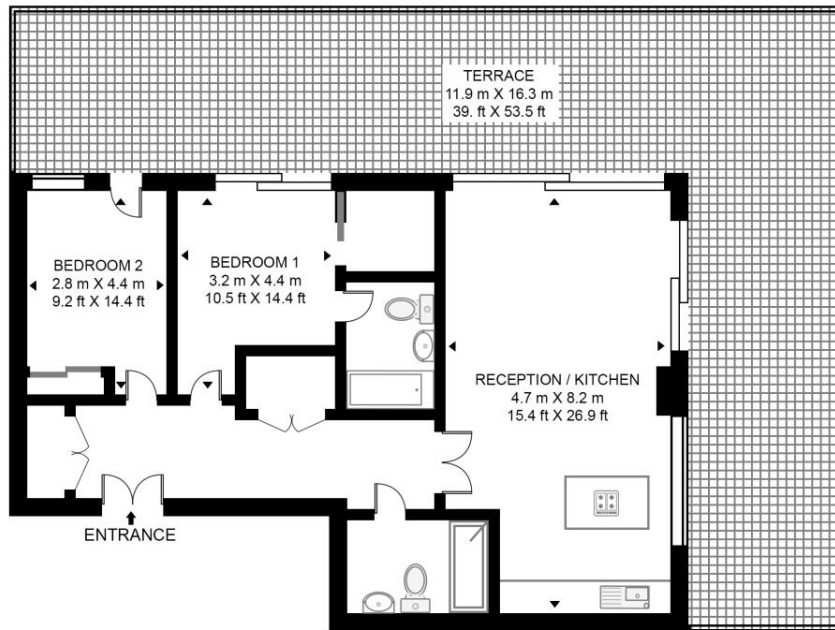
- Penthouse
- 2 Bedroom
- 2 Bathroom
- Stunning views
- Underfloor heating to living room, kitchen, halls and bathrooms
- Comfort cooling
- Two secure underground allocated parking spaces
- Generous, private wraparound roof terrace
- 24 Hour concierge
- Luxury resident only spa and leisure facilities

# Floorplan

989 sq ft | 92 sq m

## BRIDGEMAN HOUSE, RADNOR TERRACE

APPROXIMATE GROSS INTERNAL FLOOR AREA 989 SQ.FT (91.9 SQ.M)



### ELEVENTH FLOOR



This floor plan has been defined by the RICS Code of Measurement. This floor plan and all others are for approximate representative purposes only and upon usage is agreed to as such by the client.  
WWW: [hdvirtualart.com](http://hdvirtualart.com) | TEL: 0203.974.1567 | EMAIL: [info@hdvirtualart.com](mailto:info@hdvirtualart.com)

Kensington  
387 Kensington High Street,  
London W14 8QA  
+4420 7087 5696  
[saleskensington@eu.jll.com](mailto:saleskensington@eu.jll.com)

*Urban living, your way.*

[jll.co.uk/residential](http://jll.co.uk/residential)

© 2019 Jones Lang LaSalle IP, Inc. All rights reserved. All information contained herein is from sources deemed reliable; however, no representation or warranty is made to the accuracy thereof.

