



## Sinclair Road, London W14

Asking price £1,550,000 Leasehold







## Description

A beautiful first-floor apartment located in a discreet, modern, and secure gated development in the popular Brooke Green area, moments from Kensington Olympia.

This elegant apartment offers both comfortable and contemporary living, boasting a south-facing open-plan kitchen/reception area, that has been thoughtfully designed to capture natural light, creating a warm and inviting ambiance. There are 2 spacious double bedrooms and 2 superb bath/shower rooms, one of which is en-suite.

Residents benefit from landscaped communal courtyard gardens, underground parking, an on-site gym, a friendly concierge team, and access to a residents only cinema room.

Nestled a mere 0.6 miles away from the idyllic Holland Park, this location offers residents a serene retreat in the heart of London. Moreover, the renowned Kensington Gardens and Hyde Park are within a leisurely 1.5-mile walk, accessible via the vibrant Kensington High Street that offers a wide range of amenities, including trendy cafes, boutique shops, and restaurants.

For commuters it is conveniently located to transport options, K

- 2 bedrooms
- 2 bathrooms
- Concierge
- Gym and cinema
- Underground parking
- 0.1 miles to Kensington Olympia station
- EPC B

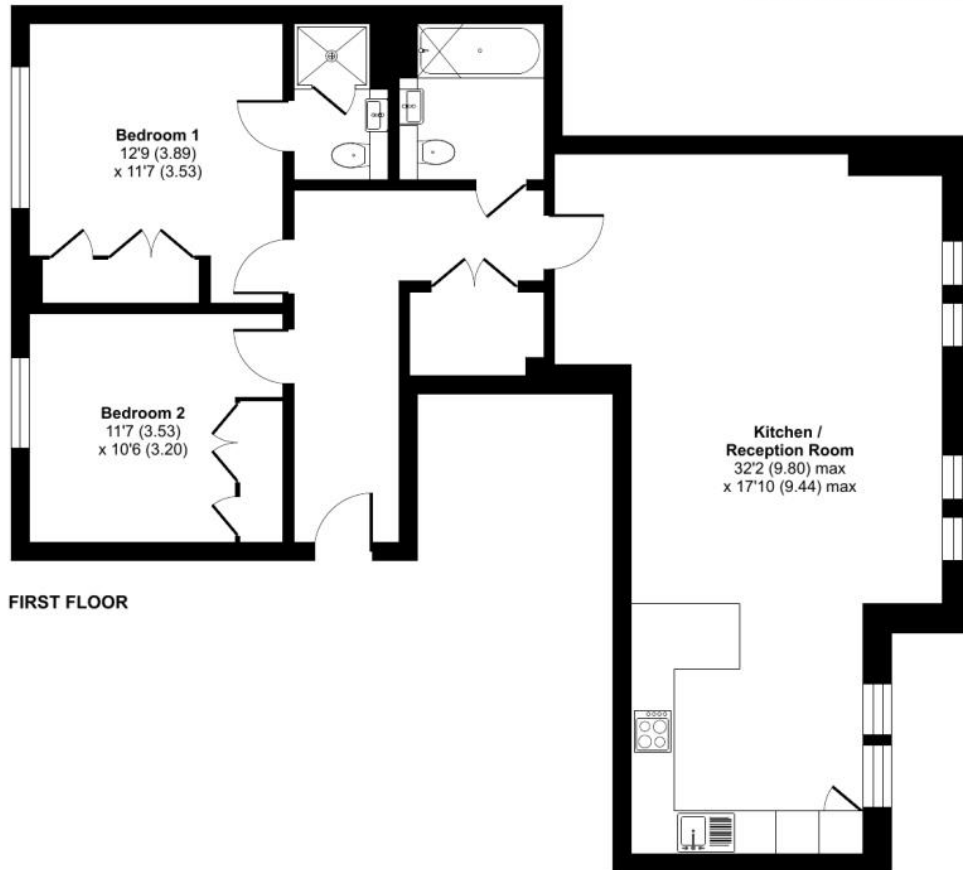
# Floorplan

976 sq ft | 91 sq m

## Atelier Apartments, Sinclair Road, London, W14

Approximate Internal Area = 976 sq ft / 90.6 sq m

For identification only - Not to scale



FIRST FLOOR



Floor plan produced in accordance with RICS Property Measurement Standards incorporating International Property Measurement Standards (IPMS2 Residential). © ncthecom 2024. Produced for JLL Residential. REF: 1089296

Kensington  
387 Kensington High Street,  
London W14 8QA  
+4420 7087 5696  
lettingskensington@eu.jll.com

*Urban living, your way.*

[jll.co.uk/residential](http://jll.co.uk/residential)

© 2019 Jones Lang LaSalle IP, Inc. All rights reserved. All information contained herein is from sources deemed reliable; however, no representation or warranty is made to the accuracy thereof.

