



## Radnor Terrace, London W14

Guide price £1,525,000 Leasehold







# Description

An exquisite second floor apartment measuring approximately 1,017 sq ft, within a highly prestigious development on Kensington High Street.

This exceptional property stands out as one of the premium plots within the building, boasting an extensive interior design.

The apartment comprises a luxurious master bedroom with an en-suite bathroom and walk-in wardrobe, a spacious second double bedroom, a shower room, an elegant reception room, and a fully fitted, open-plan kitchen. With floor-to-ceiling picture windows throughout, residents can enjoy panoramic views and an influx of natural light.

The development offers an array of outstanding amenities, including a 24-hour concierge service, a state-of-the-art business suite, a private cinema room, a beautifully landscaped courtyard, a bespoke swimming pool, and a range of fitness and spa facilities, ensuring a truly opulent lifestyle.

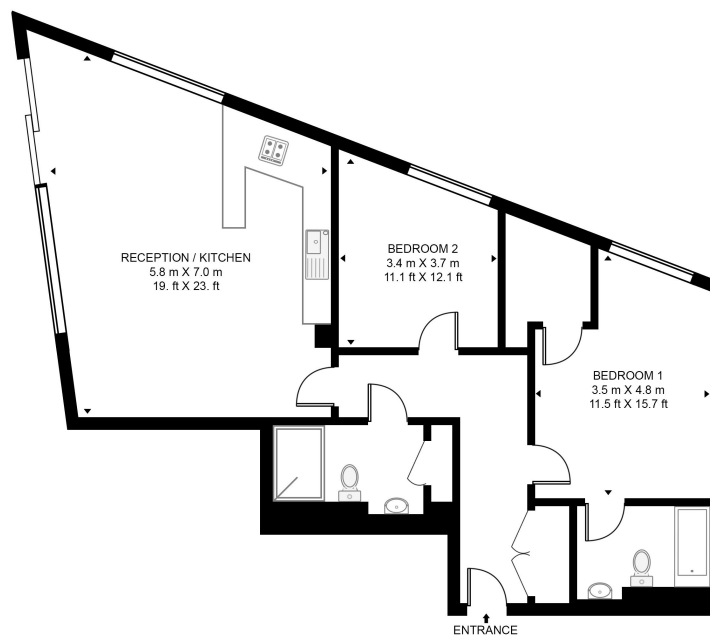
- 2 Bedrooms
- 2 Bathrooms
- 24 hr concierge
- Gym, swimming pool and cinema
- 0.3 miles to Kensington Olympia station
- Approx 1017 sq ft (94.5 sq m)
- EPC B



# Floorplan

1,017 sq ft | 95 sq m

**BENSON HOUSE, 375 KENSINGTON HIGH STREET**  
APPROXIMATE GROSS INTERNAL FLOOR AREA 1017 SQ.FT (94.5 SQ.M)



SECOND FLOOR



**HDVA**

This floor plan has been defined by the RICS Code of Measurement. This floor plan and all others are for approximate representative purposes only and upon usage is agreed to as such by the client.  
WWW: [hdvirtualart.com](http://hdvirtualart.com) | TEL: 0203.974.1567 | EMAIL: [info@hdvirtualart.com](mailto:info@hdvirtualart.com)

Kensington  
387 Kensington High Street,  
London W14 8QA  
+4420 7087 5696  
[lettingskensington@eu.jll.com](mailto:lettingskensington@eu.jll.com)

*Urban living, your way.*

[jll.co.uk/residential](http://jll.co.uk/residential)

© 2019 Jones Lang LaSalle IP, Inc. All rights reserved. All information contained herein is from sources deemed reliable; however, no representation or warranty is made to the accuracy thereof.

