

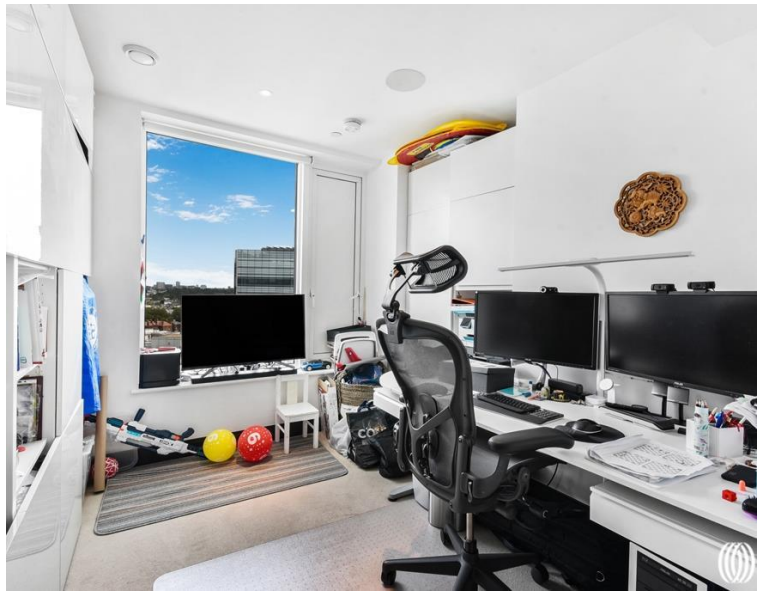


Beadon Road, Sovereign Court W6

Asking price £1,900,000 Leasehold







Description

This is a stunning 3 bedroom apartment situated in the exceptional Sovereign Court Development, W6. The property offers approximately 1,251 sq ft of luxurious living space, meticulously finished to the highest possible standards. The apartment comprises 3 bedrooms, 2 bathrooms, and 2 balconies that offer breathtaking views.

Additionally, the apartment comes with secure underground parking. Furthermore, the amazing Sovereign Court Development is complemented by landscaped gardens, an interior designed entrance foyer, and access to a private gym that's exclusive to residents.

The location of this apartment is excellent, as it's within easy reach of Hammersmith Broadway, which provides access to the Piccadilly, District, Hammersmith and City, and Circle lines.

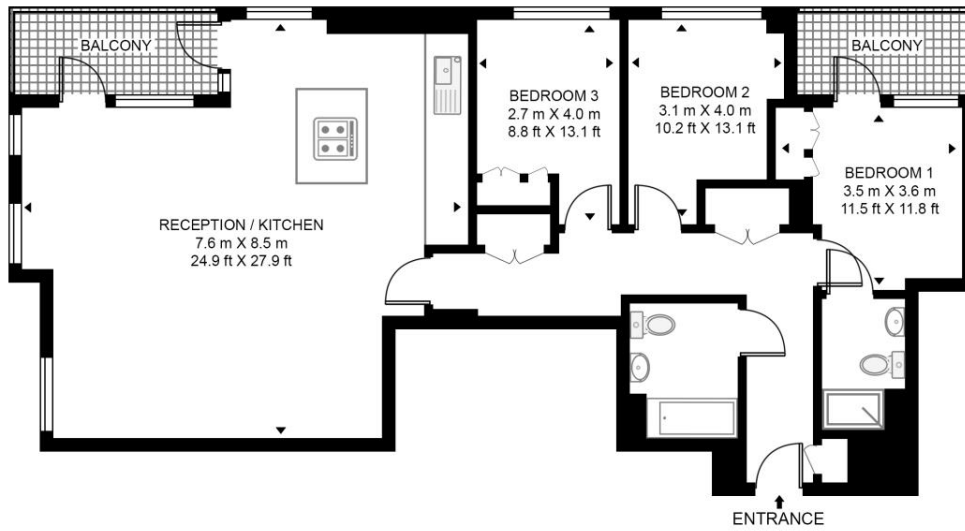
Please note that the photos and floor plan are provided for representation purposes only.

- Skyline views
- 3 bedrooms
- 2 bathrooms
- Secure underground parking
- EPC B
- Approx 1251 sq ft (116.2 sq m)

Floorplan

1,251 sq ft | 116 sq m

MARQUIS HOUSE, SOVEREIGN COURT
APPROXIMATE GROSS INTERNAL FLOOR AREA 1254 SQ.FT (116.5 SQ.M)



THIRTEENTH FLOOR



This floor plan has been defined by the RICS Code of Measurement. This floor plan and all others are for approximate representative purposes only and upon usage is agreed to as such by the client.
WWW: hdvirtualart.com | TEL: 0203.974.1567 | EMAIL: info@hdvirtualart.com

Kensington
387 Kensington High Street,
London W14 8QA
+4420 7087 5696
saleskensington@eu.jll.com

Urban living, your way.

jll.co.uk/residential

© 2019 Jones Lang LaSalle IP, Inc. All rights reserved. All information contained herein is from sources deemed reliable; however, no representation or warranty is made to the accuracy thereof.

