



# Radnor Terrace, London W14

Asking price £2,750,000 Leasehold







## Description

A bright, spacious and unique two bedroom, 9th floor apartment at 375 Kensington High Street. This new development by St Edward Homes situated within the prestigious Royal Borough of Kensington and Chelsea and are set around a courtyard garden, further benefiting from a private swimming pool and spa, private cinema, business suite and 24 hour concierge. The property benefits from underfloor heating, modern and high spec kitchen and built in wardrobe space along with a large courtyard facing private sky garden terrace. The property is offered on a furnished basis.

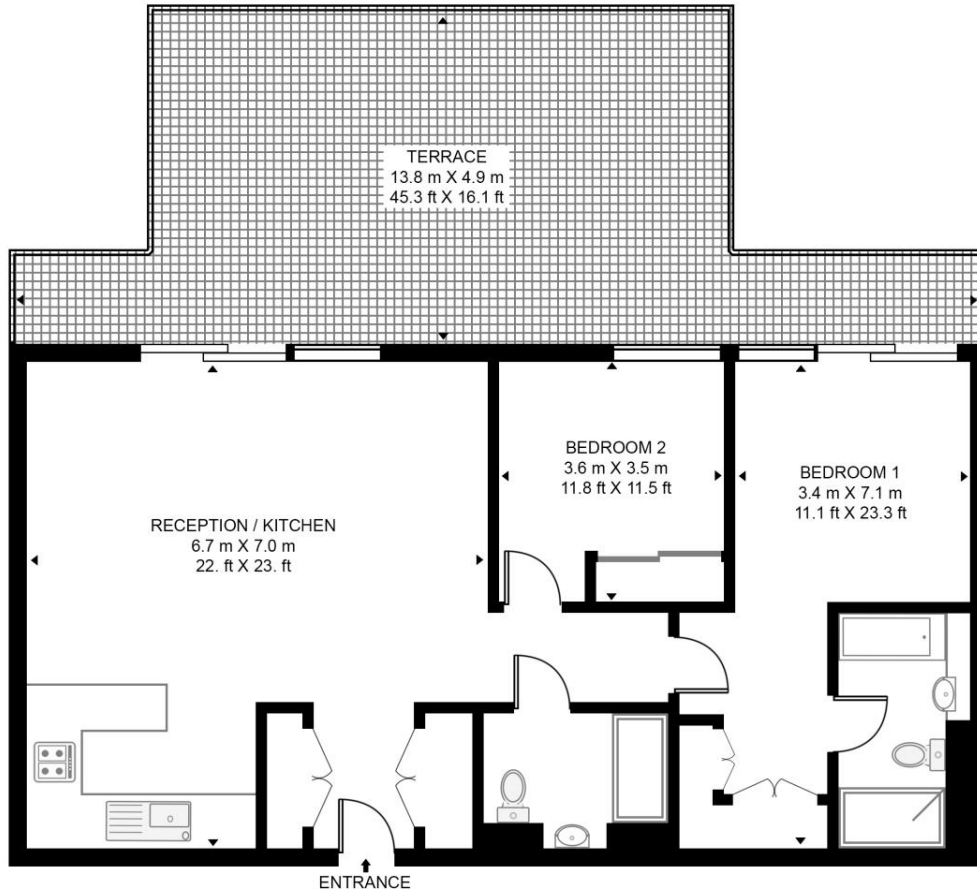
- 2 Bedroom
- 2 Bathroom
- large private balcony
- Luxury facilities
- Approx: 1061 sq ft (99 sq m)
- EPC: B

# Floorplan

1,061 sq ft | 99 sq m

## BRIDGEMAN HOUSE

APPROXIMATE GROSS INTERNAL FLOOR AREA 1061 SQ.FT (98.6 SQ.M)



## NINTH FLOOR



This floor plan has been defined by the RICS Code of Measurement. This floor plan and all others are for approximate representative purposes only and upon usage is agreed to as such by the client.  
WWW: [hdvirtualart.com](http://hdvirtualart.com) | TEL: 0203.974.1567 | EMAIL: [info@hdvirtualart.com](mailto:info@hdvirtualart.com)

Kensington  
387 Kensington High Street,  
London W14 8QA  
+4420 7087 5696  
[lettingskensington@eu.jll.com](mailto:lettingskensington@eu.jll.com)

*Urban living, your way.*

[jll.co.uk/residential](http://jll.co.uk/residential)

© 2019 Jones Lang LaSalle IP, Inc. All rights reserved. All information contained herein is from sources deemed reliable; however, no representation or warranty is made to the accuracy thereof.

