



Radnor Terrace, London W14

Guide price £3,300,000 Leasehold





Description

An elegant three bedroom apartment within the luxurious and popular development 375 Kensington High Street. This apartment is unique in that it offers larger living space and bedroom proportions compared to most within the development. The property boasts 3 doubled bedrooms all with en-suite bathrooms, large open plan kitchen/living room with access to a large balcony with views to the east. This spectacular apartment also comes with underground parking for one car and access to the on-site, resident only facilities (cinema, pool, gym and spa facilities) as well as 24 hour concierge. Other benefits of this property are that it is moments away from the shops and local amenities, close to Holland Park and Kensington Palace Gardens and is well positioned to multiple transport links.

- 3 Bedroom
- 3 Bathroom
- No chain
- As new condition
- Luxury facilities
- Approx 1728 sq ft (160 sq m)
- EPC rating B

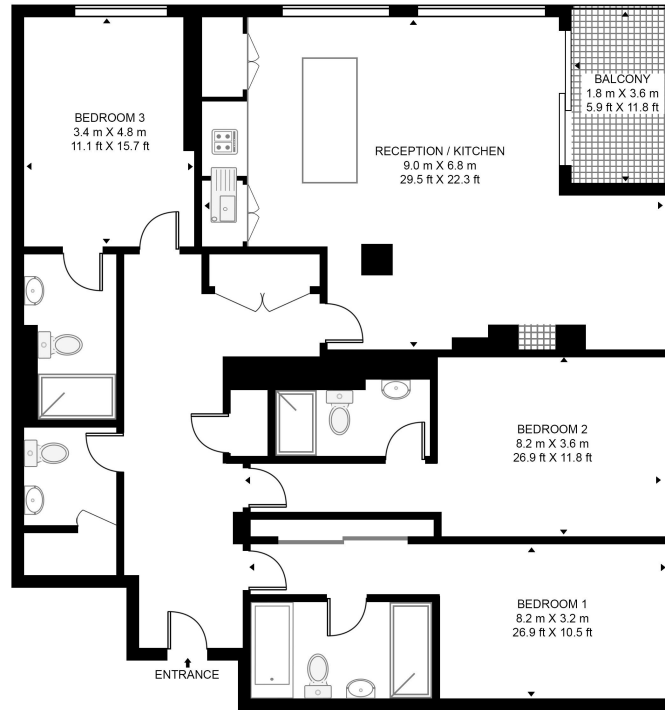


Floorplan

1,728 sq ft | 161 sq m

BRIDGEMAN HOUSE

APPROXIMATE GROSS INTERNAL FLOOR AREA 1728 SQ.FT (160.5 SQ.M)



FIFTH FLOOR



This floor plan has been defined by the RICS Code of Measurement. This floor plan and all others are for approximate representative purposes only and upon usage is agreed to as such by the client.
WWW: hdvirtualart.com | TEL: 0203.974.1567 | EMAIL: info@hdvirtualart.com

Kensington
387 Kensington High Street,
London W14 8QA
+4420 7087 5696
lettingskensington@eu.jll.com

Urban living, your way.

jll.co.uk/residential

© 2019 Jones Lang LaSalle IP, Inc. All rights reserved. All information contained herein is from sources deemed reliable; however, no representation or warranty is made to the accuracy thereof.

