



## Beadon Road, Hammersmith W6

Asking price £2,000,000 Leasehold







## Description

A bright and spacious three bedroom apartment within a luxury development in Hammersmith. Arranged over the ninth floor of Marquis House with excellent views, the apartment benefits from wood floors, state of the art appliances, use of the onsite gym, 24 hour concierge and communal gardens. Property comprises three spacious double bedrooms (one en-suite), 2 bathrooms, living room leading to private balcony and an open plan kitchen.

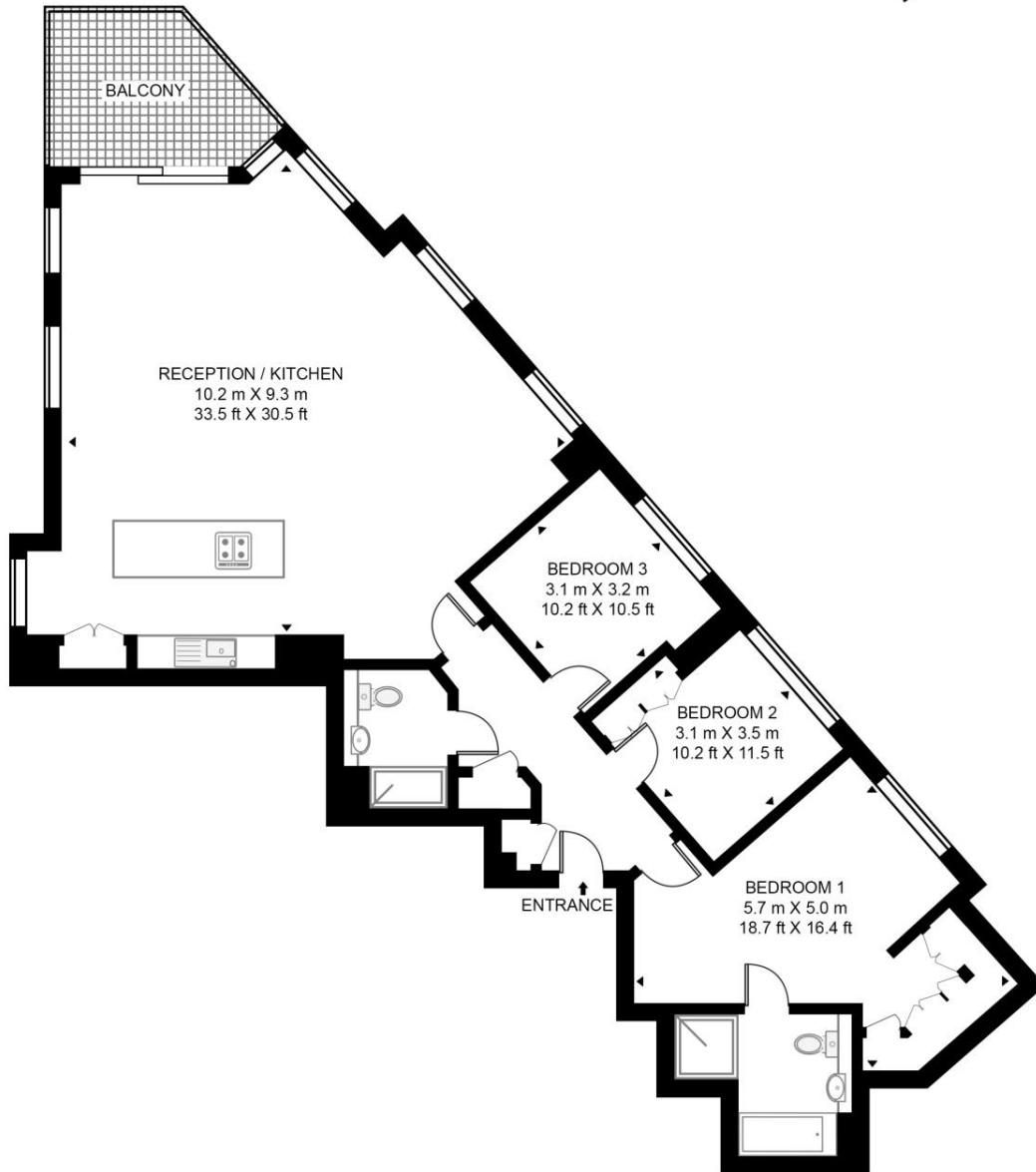
- 3 Bedrooms
- 2 Bathrooms
- Private balcony
- 24 Hour concierge
- Gym and communal gardens
- Approx 1422 sq ft (132 sq m)
- EPC: B

# Floorplan

1,422 sq ft | 132 sq m

## MARQUIS HOUSE

APPROXIMATE GROSS INTERNAL FLOOR AREA 1422 SQ.FT (132.1 SQ.M)



NINTH FLOOR



This floor plan has been defined by the RICS Code of Measurement. This floor plan and all others are for approximate representative purposes only and upon usage is agreed to as such by the client.  
WWW: [hdvirtualart.com](http://hdvirtualart.com) | TEL: 0203.974.1567 | EMAIL: [info@hdvirtualart.com](mailto:info@hdvirtualart.com)

Kensington  
387 Kensington High Street,  
London W14 8QA  
+4420 7087 5696  
[lettingskensington@eu.jll.com](mailto:lettingskensington@eu.jll.com)

*Urban living, your way.*

[jll.co.uk/residential](http://jll.co.uk/residential)

© 2019 Jones Lang LaSalle IP, Inc. All rights reserved. All information contained herein is from sources deemed reliable; however, no representation or warranty is made to the accuracy thereof.

