



Ossel Court, Telegraph Avenue, Greenwich SE10 0TE



## Ossel Court, Telegraph Avenue SE10

Leasehold (989 years remaining)

Positioned along Greenwich's prestigious waterfront, this contemporary apartment offers an exceptional riverside lifestyle within one of London's most historically significant neighbourhoods.

### Key Features

- 2 Bedrooms, 2 Bathrooms
- 2 Balconies
- Stunning views of Canary Wharf
- Council Tax: **E**
- Service Charge: **£3,000 P/A**
- Ground Rent: **£600 P/A**
- Close to transport links
- EPC: **B**

Located on the 1st floor, this stunning apartment has the benefit of two balconies which frame spectacular panoramic views across the River Thames towards the gleaming towers of Canary Wharf and the distinctive silhouette of the O2 Arena. The generous glazing throughout ensures the property is bathed in natural light, creating bright, airy interiors that complement the contemporary design aesthetic.

With two well-appointed bathrooms, the apartment offers practical modern living alongside its scenic credentials. The thoughtfully planned layout maximises both the impressive square footage and the stunning vistas, ensuring residents can fully appreciate their Thames-side location from multiple vantage points throughout the home.

Transport connections place the City and Canary Wharf within easy reach via Cutty Sark and Island Gardens DLR stations, whilst Greenwich mainline station provides direct access to Central London and beyond. The Thames Path offers scenic riverside walks, connecting residents to London's waterfront network whilst maintaining the peaceful riverside ambience that defines this coveted location.













## Ossel Court, SE10

Approximate Gross Internal Area = 77.8 sq m / 837 sq ft

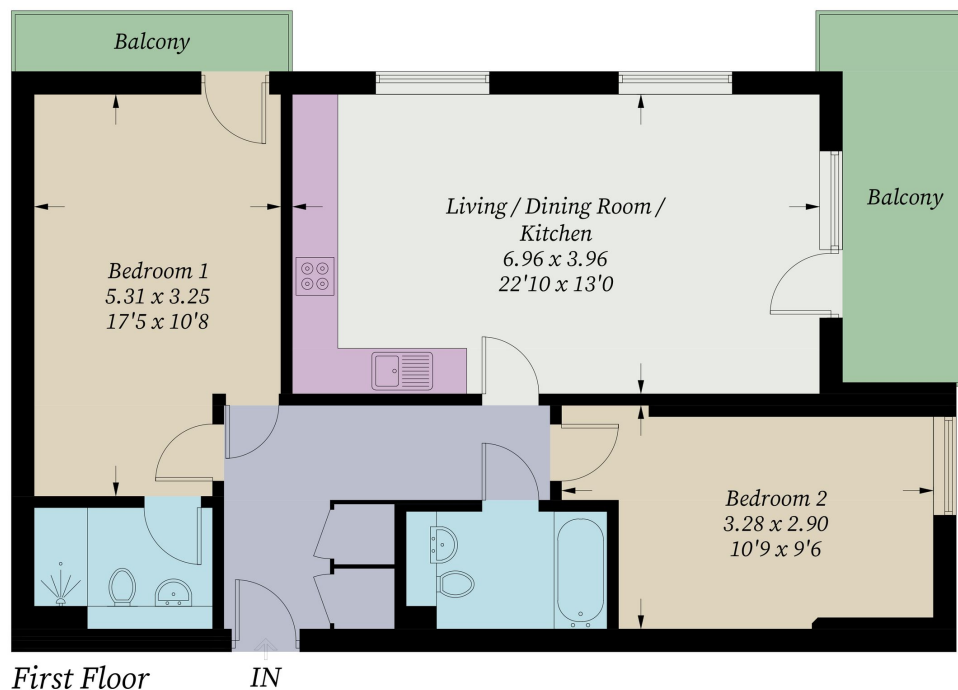


Illustration for identification purposes only, measurements are approximate,  
not to scale. Fourlabs.co © (ID1264989)

22 College Approach, Greenwich,  
London, SE10 9HY  
Tel: 020 7399 5595

**Sales, Lettings & Property Management**

**residential.jll.co.uk**

