



Cutter Lane, Greenwich, London, SE10 0YB



Cutter Lane, Greenwich SE10

Leasehold (229 years remaining)

A stylish apartment located in the Upper Riverside development, on the 5th floor with stunning views across the river Thames overlooking the Emirates Air Line and directly across from North Greenwich Pier and close to North Greenwich tube station.

Key Features

- 1 Double bedroom, 1 Bathroom
- Private balcony
- Stunning river views
- Council Tax: **D**
- Service Charge: **£4,458.22**
- Ground Rent: **£563.84 P/A**
- 24-Hour concierge
- EPC: **B**

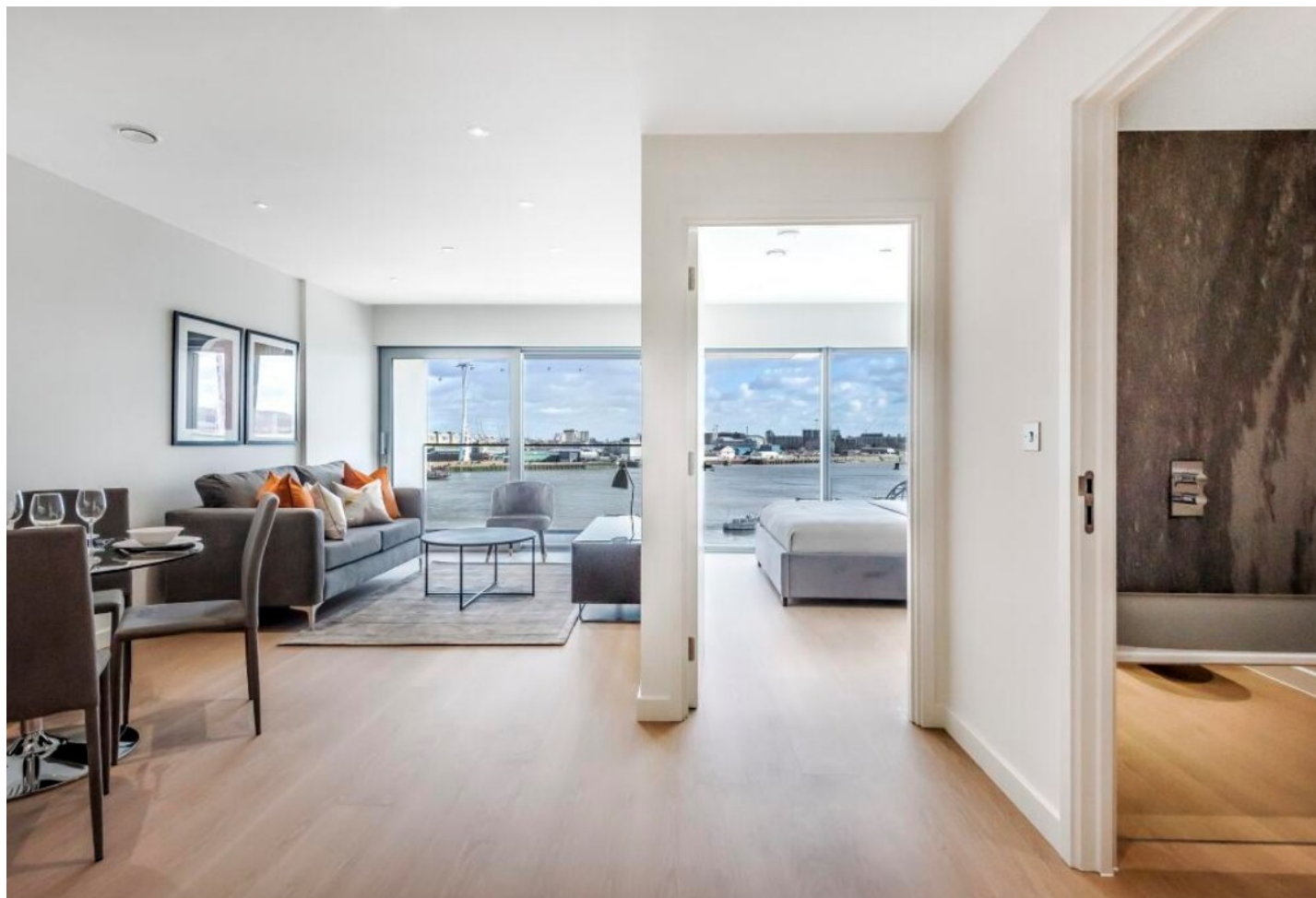
The accommodation comprises entrance hall with a built in double cupboard, open plan kitchen / dining and living room area with floor to ceiling windows and leads out onto a private balcony offering stunning views over the river Thames. One double bedroom with floor to ceiling windows and a separate family bathroom.

A 24 hour concierge team is on hand to assist you in any way they can and they are located at the Tom Dixon designed ground floor lobby of neighbouring No.2 Upper Riverside. You also have the benefit of a residents' gym, swimming pool, cinema and lounges which are all stunning and ideal for relaxing and meeting clients and friends.

No. 1 Upper Riverside, was designed by world-famous architects Skidmore Owings and Merrill, whos past projects include the Burj Khalifa and One World Trade Center.

The property is well presented throughout and offers no onward chain.









Cutter Lane, Greenwich, SE10

Approximate Gross Internal Area = 48.8 sq m / 525 sq ft



Illustration for identification purposes only, measurements are approximate, not to scale. Fourlabs.co © (ID1263206)

22 College Approach, Greenwich,
London, SE10 9HY
Tel: 020 7399 5595

Sales, Lettings & Property Management

residential.jll.co.uk

