



Fiador Apartments, 21 Telegraph Avenue SE10 0TH



## Fiador Apartments, Greenwich SE10

Leasehold (992 years remaining)

Contemporary apartment in Greenwich featuring two private balconies. Moments from Royal Greenwich Park and the historic town centre, with excellent transport links via Cutty Sark DLR, Greenwich stations and North Greenwich Jubilee Line.

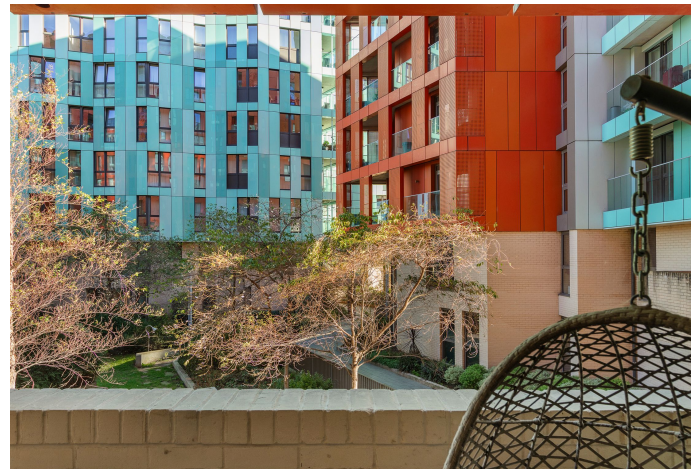
### Key Features

- 1 Bedroom, 1 Bathroom
  - 2 Balconies
  - 24-Hour concierge
  - Council Tax: C
  - Service Charge: **£2,742 P/A**
  - Ground Rent: **£460 P/A**
  - Resident's onsite gym
  - EPC: **B**
- 

This thoughtfully designed apartment benefits from abundant natural light and a well-proportioned layout that maximises the 587 square feet of living space. The standout feature is two private balconies, creating a tranquil oasis with pleasant views over the surrounding grounds - an ideal space for morning coffee or evening relaxation away from the bustle of city life.

Greenwich's rich maritime heritage surrounds residents, with the iconic Cutty Sark, National Maritime Museum, and the expansive Greenwich Park all within easy reach. The area seamlessly blends historical significance with modern amenities, offering an array of independent shops, riverside pubs, and the famous Greenwich Market.

Transport connectivity is exceptional, with Cutty Sark DLR station and Greenwich National Rail station providing swift access to Canary Wharf, the City, and Central London together with North Greenwich (Jubilee line). The Thames Path offers scenic riverside walks, while the UNESCO World Heritage site status ensures the area's unique character is preserved for future generations.













## *Fiador apartments*

Approximate Gross Internal Area = 54.5 sq m / 587 sq ft

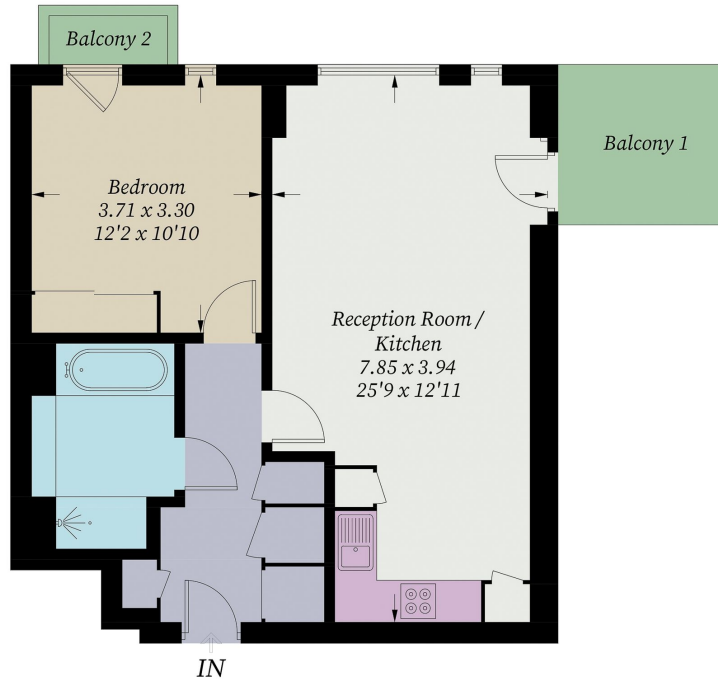


Illustration for identification purposes only, measurements are approximate, not to scale. Fourlabs.co © (ID1247572)

22 College Approach, Greenwich,  
London, SE10 9HY  
Tel: 020 7399 5595

**Sales, Lettings & Property Management**

**[residential.jll.co.uk](http://residential.jll.co.uk)**

