



Tiggap House, 20 Cable Walk, Greenwich, London SE10 0TP



## Tiggap House, Greenwich SE10

Leasehold (990 years remaining)

Bright two-bedroom apartment with private balcony overlooking tranquil internal gardens with partial river views in this modern Greenwich development. Gated allocated parking included. Perfect blend of riverside living and historic charm.

### Key Features

- 2 Bedrooms, 2 Bathrooms
- Modern Greenwich development
- Light and spacious throughout
- Council Tax: C
- Service Charge: **£3,500 P/A**
- Ground Rent: **£615 P/A**
- Excellent transport links
- EPC: **B**

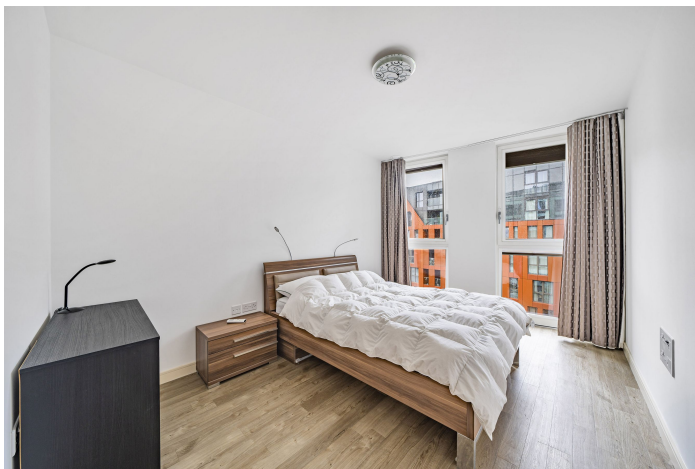
Set within the heart of historic Greenwich, this bright two-bedroom apartment occupies an elevated position in the contemporary Tiggap House development on Cable Walk. The property benefits from a private balcony that overlooks the development's beautifully maintained internal gardens with partial river Thames views, creating a peaceful retreat from the energy of this vibrant riverside location. Natural light flows throughout the apartment, while the thoughtful layout maximises the 884 square feet of living space across two generous bedrooms and two well-appointed bathrooms.

Transport connections are exceptional, with Cutty Sark DLR station providing direct links to Canary Wharf and Bank, while Greenwich National Rail station connects to London Bridge and Central London. Also the apartment has quick access to North Greenwich Jubilee Line. The Thames Path offers scenic walking and cycling routes, while multiple bus services ensure comprehensive connectivity across South and East London.













## Tiggap House

Approximate Gross Internal Area = 82.1 sq m / 884 sq ft



IN

### Sixth Floor

Illustration for identification purposes only, measurements are approximate,  
not to scale. Fourlabs.co © (1246034)

22 College Approach, Greenwich,  
London, SE10 9HY  
Tel: 020 7399 5595

**Sales, Lettings & Property Management**

**residential.jll.co.uk**

