



Macey House, Thames Street, Greenwich SE10 9DH



Macey House, Greenwich SE10

Leasehold (103 years remaining)

Within close proximity to the centre of Greenwich comes this ground floor apartment within walking distance of Cutty Sark DLR station.

Key Features

- 2 Double bedrooms, 1 Bathroom
- Central Greenwich location
- Purpose built apartment
- EPC: **C**
- Service Charge: **£1,5593 P/A**
- Ground Rent: **£10 P/A**
- Close to transport links
- Council Tax: **A**

The accommodation comprises large entrance hall with two built in cupboards, open plan living room / dining / kitchen area with fixed based and wall mounted modern white units with integrated appliances, and a fixed peninsular for separation and seating each side. There are also two double bedrooms and a separate family bathroom.

Macey House is situated in a prime location, offering residents easy access to a range of amenities, including shops, restaurants, and cultural attractions. The vibrant Greenwich Market is nearby, offering a variety of food, crafts, and antiques. Additionally, the famous Cutty Sark, the Royal Observatory, and the Royal Greenwich Park are all within walking distance. The property is also very close to both Greenwich Station & Cutty Sark Station, giving access to Canary Wharf and the City in 10-15 minutes.

The property is also very close to the Thames Path and leisurely walks along the River Thames and admiring the views of Canary Wharf, The Shard and The London Eye in the distance.









Macey House, SE10

Approximate Gross Internal Area = 62.5 sq m / 673 sq ft

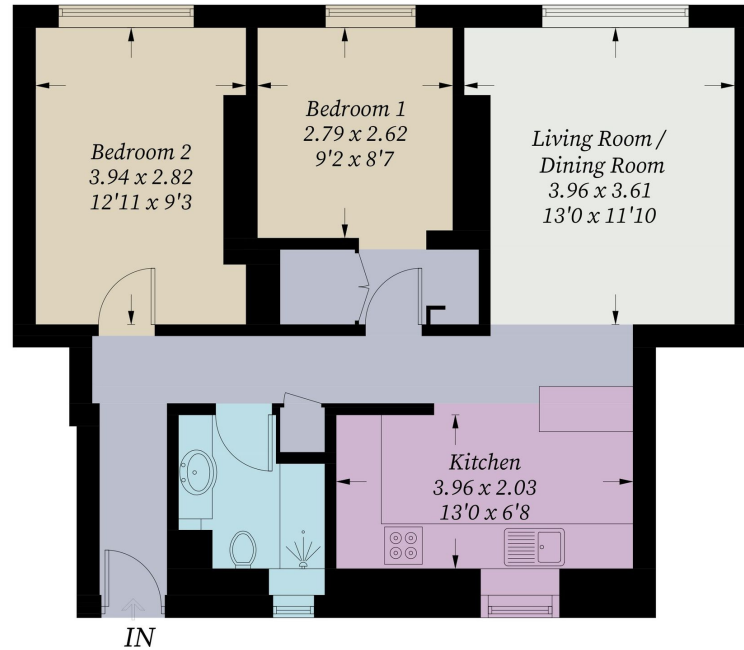


Illustration for identification purposes only, measurements are approximate, not to scale. Fourlabs.co © (ID1219009)

22 College Approach, Greenwich,
London, SE10 9HY
Tel: 020 7399 5595

Sales, Lettings & Property Management

residential.jll.co.uk

