



Arbor House, Moulding Lane, London, SE14 6BS



Arbor House, London, SE14

Leasehold (990 years remaining)

Boasting 963 sq. ft. (89.5 sq. m.) of internal space, this immaculate and EWS1 compliant 3rd floor flat comes to market with the additional benefit of concierge services.

Key Features

- 2 Double bedrooms
- 2 Bathrooms
- Balcony
- Council Tax: **D**
- Service Charge: **£4,569.16 P/A**
- Ground Rent: **£550 P/A**
- Close to mainline and DLR
- EPC: B

The Property

Situated a 10-minute walk from both New Cross & Deptford Station, providing excellent transport links, comes this light and spacious, modern two bedroom, two bathroom apartment on the third floor in the exciting, new Anthology Deptford Foundry development, a short walk to the Thames and Greenwich.

This lovely spacious apartment offers a high standard of finish and is light and airy throughout. It briefly comprises entrance hallway with built-in cupboards, spacious open plan reception room leading to a large, private balcony with views across London including The Shard. A fantastic modern kitchen with a range of integrated appliances.

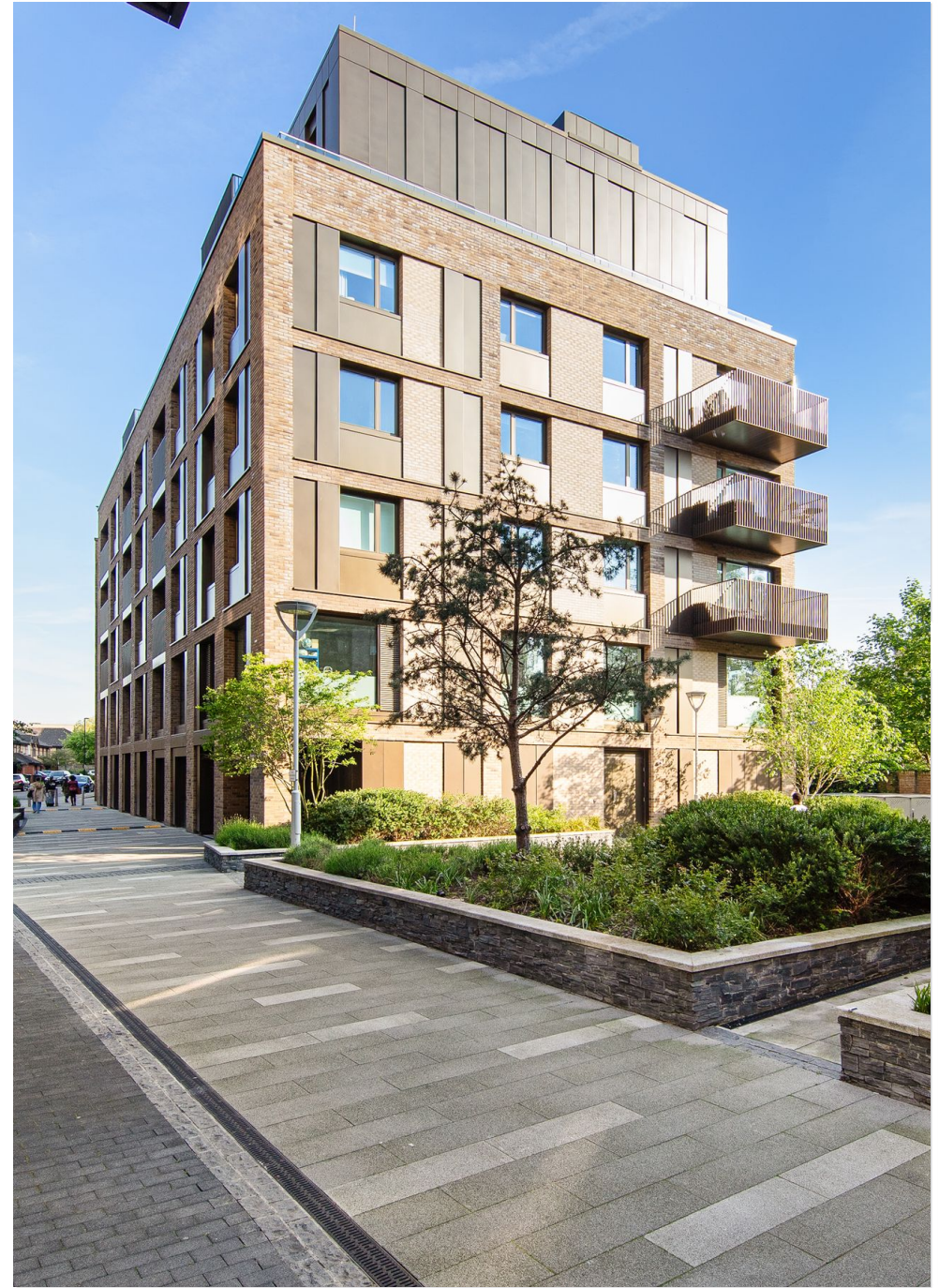
Two good sized bedrooms with built in wardrobes, master with en-suite bathroom and a separate modern contemporary family bathroom.













Arbor House

Approximate Gross Internal Area = 89.5 sq m / 963 sq ft

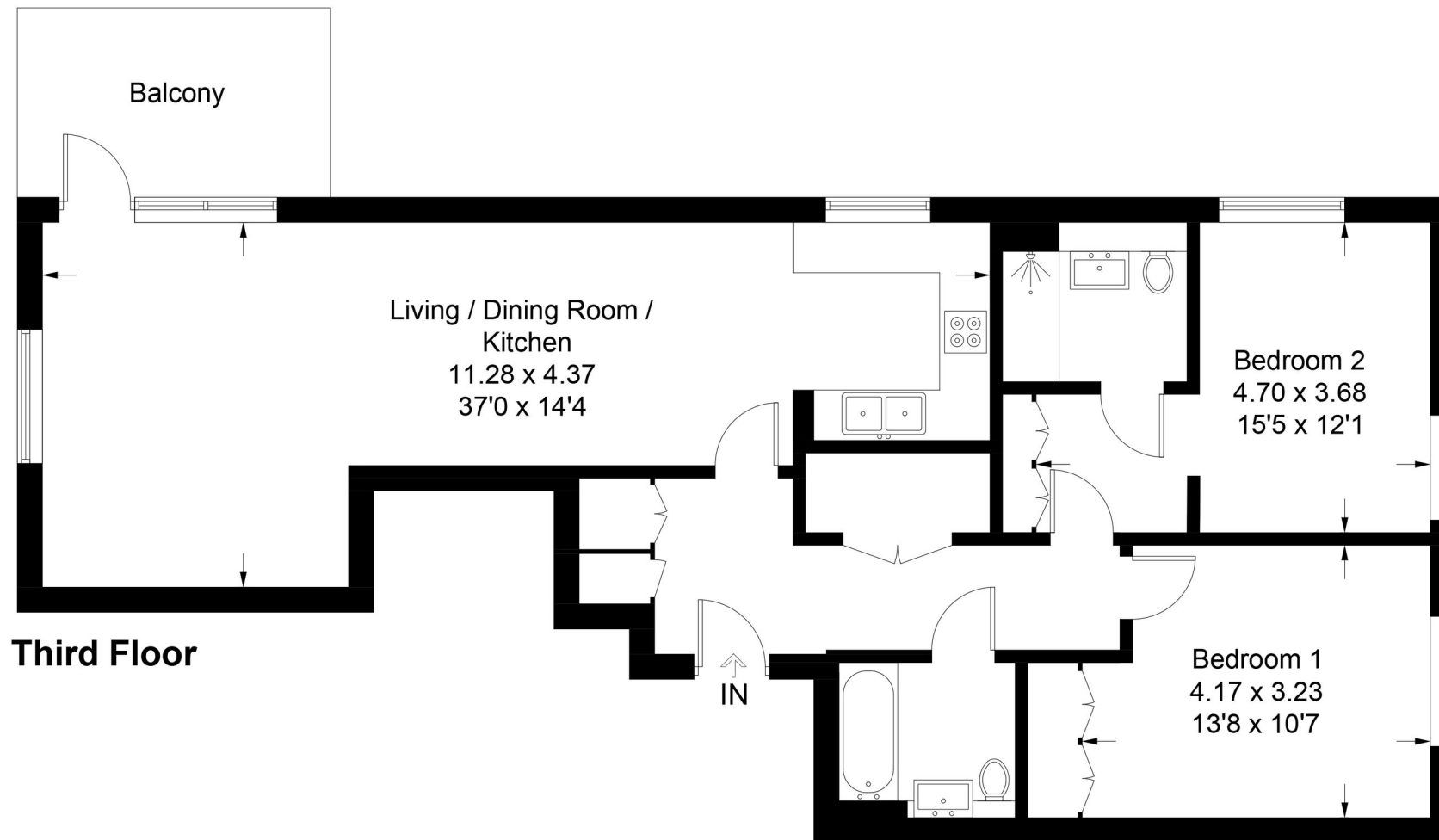


Illustration for identification purposes only, measurements are approximate, not to scale. floorplansUsketch.com © (ID1080729)

22 College Approach, Greenwich,
London, SE10 9HY
Tel: 020 7399 5595

Sales, Lettings & Property Management

residential.jll.co.uk

