



Conningham Court, 17 Dowding Drive, London, SE9 6AY



Conningham Court, London, SE9

Leasehold (984 years remaining)

A light and bright apartment furnished to an extremely high standard throughout in the popular Kidbrooke Village with the Mainline station a short walk away.

Key Features

- 2 Double bedrooms, 2 Bathrooms
- Balcony overlooking the grounds
- 2nd Floor modern apartment
- Council Tax: **C**
- Service Charge: **£4,248.10**
- Ground Rent: **£350 P/A**
- No onward chain
- EPC: **B**

This must see apartment comprises large entrance hall with built in cupboards and doors to all rooms. Open-plan reception room / kitchen with double doors leading onto a private balcony with views of the stunning grounds. A modern and stylish kitchen has a range of base and wall mounted units with integrated appliances. Two double bedrooms, master bedroom has built in wardrobes and access to an en-suite bathroom. A separate family bathroom finishes off the property.

Further benefits include secure underground parking, a residents gym and a 24 hour concierge service.

The property is well located for Kidbrooke mainline station which is a short walk away and has direct routes to London Bridge, Charing Cross, Victoria and Cannon Street. You can also change for the DLR for access to Canary Wharf. The property comes to the market with no onward chain, early viewings are highly recommended









Conningham Court

Approximate Gross Internal Area = 84.4 sq m / 908 sq ft

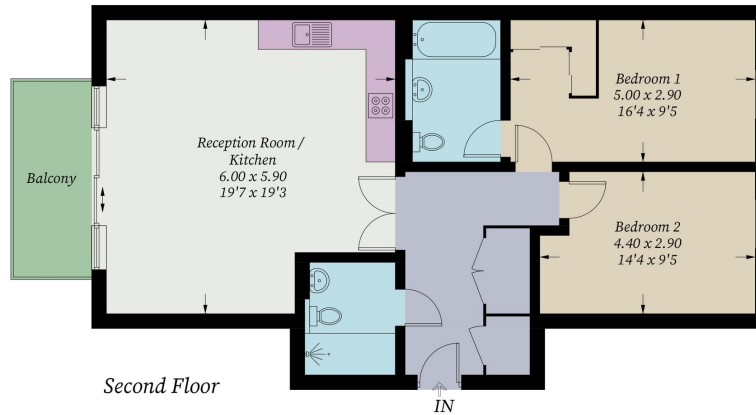


Illustration for identification purposes only, measurements are approximate,
not to scale. Fourlabs.co © (ID1206901)

22 College Approach, Greenwich,
London, SE10 9HY
Tel: 020 7399 5595

Sales, Lettings & Property Management

residential.jll.co.uk

