



Brick Kiln One, Station Road, London SE13 5FP



## Brick Kiln One, London, SE13

Leasehold (239 years remaining)

A stunning apartment located in the Portrait development in Central Lewisham. Offering quick and easy access into Central London and Canary Wharf as well as a range of good local amenities.

### Key Features

- 2 Double bedrooms, 2 Bathrooms
- Private balcony
- 8th Floor
- Council Tax: C
- Service Charge: **£4,110.04**
- Ground Rent: **£375 P/A**
- Close to transport links
- EPC: **B**

The accommodation comprises large entrance hall with built in cupboards for great storage, and doors to each room. Open plan reception room / kitchen with fantastic floor to ceiling windows and access onto a private balcony offering far reaching London views. Two double bedrooms, master with en-suite shower room and built in wardrobes and a family bathroom finishes off the property. The property offers high end finishes throughout and no onward chain.

Situated in the heart of Lewisham, The Portrait development is a striking high-rise building offering a range of one to three-bedroom apartments and penthouses. Crafted by Muse and architecturally designed by the renowned PRP, this development exemplifies elegance and sophistication. Conveniently located, Lewisham station with its DLR and National Rail train links is just a stone's throw away, making commuting a breeze.







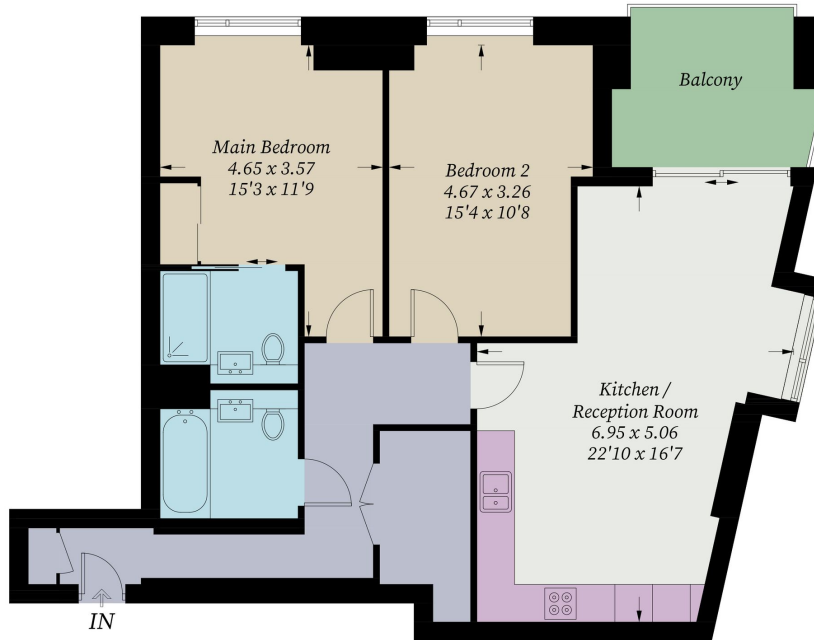






## Brick Kiln One

Approximate Gross Internal Area = 82.52 sq m / 888.25 sq ft



*Eighth Floor*

Illustration for identification purposes only, measurements are approximate,  
not to scale. Fourlabs.co © (ID1202651)

22 College Approach, Greenwich,  
London, SE10 9HY  
Tel: 020 7399 5595

**Sales, Lettings & Property Management**

**[residential.jll.co.uk](https://residential.jll.co.uk)**

