



Paynes Lodge, 3 Wharf Street, London SE8 3FT



Paynes Lodge, Wharf Street, SE8

Leasehold (981 years remaining)

This fantastic apartment is located in the popular Paynes & Borthwick development benefitting from excellent transportation links with both Deptford station and Cutty Sark Station

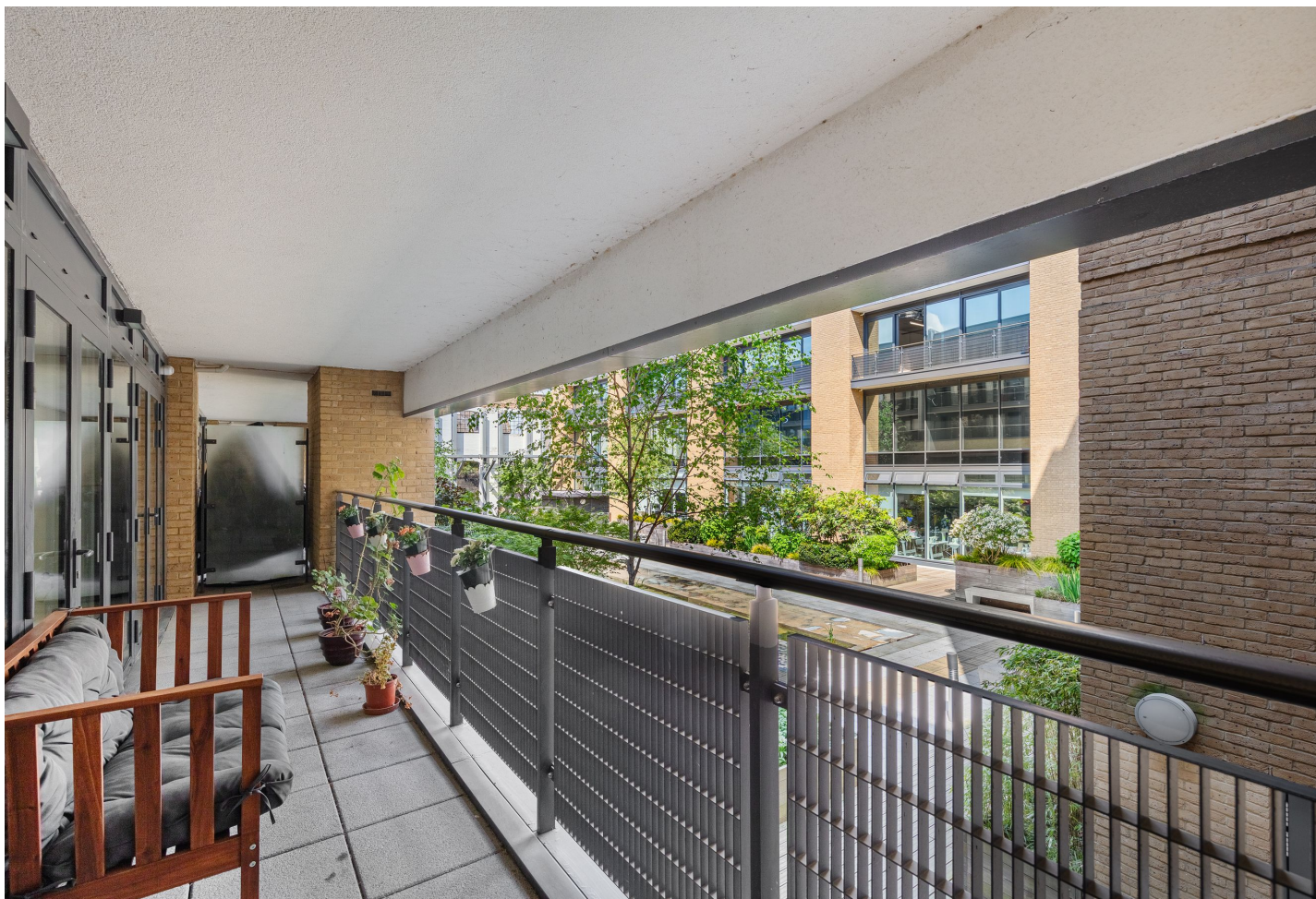
Key Features

- 2 Double bedrooms, 2 Bathrooms
- Large private balcony
- Secure underground parking
- Council Tax: **E**
- Service Charge: **£4,661.28**
- Ground Rent: **£450 P/A**
- On-site concierge
- EPC: **B**

The accommodation comprises large entrance hall with built in cupboards and door to all rooms. An open plan living room / kitchen (23'11 x 12'0) with access onto a great sized balcony which stretches the width of the property with views across the gardens. The kitchen area has a range of base and wall mounted white gloss units with integrated appliances. Two double bedrooms, master suite has built in wardrobe, access onto the same private balcony and an en-suite shower room. Bedroom two is also a double which has access again onto the same private balcony. A contemporary family bathroom finishes off the property.

The property also benefits from concierge services and being a short walk from Central Greenwich, you will find Greenwich high street and the famous Greenwich Market. This vibrant market offers a diverse range of food stalls, crafts, antiques, clothing, and more. It's a wonderful place to explore and indulge in unique shopping experiences. The high street also offers a vast array of both restaurants, amenities and shops.



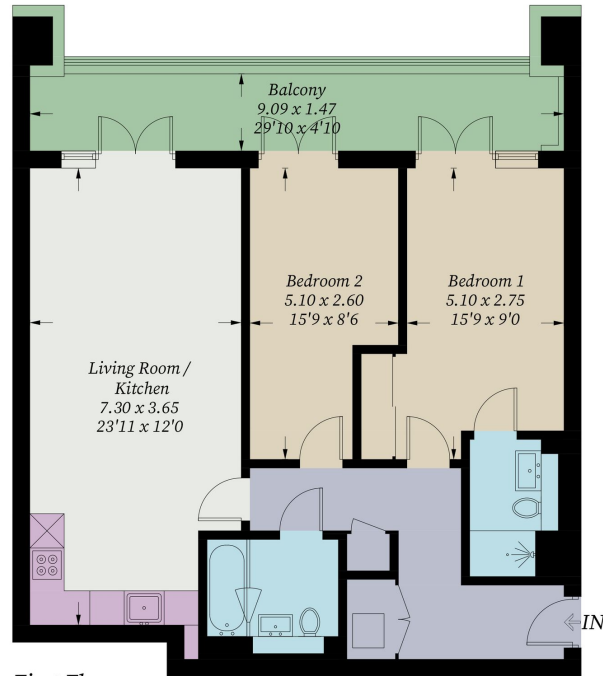






Payne Lodge, SE8

Approximate Gross Internal Area = 79.5 sq m / 856 sq ft



First Floor

Illustration for identification purposes only, measurements are approximate, not to scale. Fourlabs.co © (ID1200282)

22 College Approach, Greenwich,
London, SE10 9HY
Tel: 020 7399 5595

Sales, Lettings & Property Management

residential.jll.co.uk

