



*Granite Apartments, River Gardens Walk, Greenwich SE10 0GB*



## Granite Apartments, Greenwich, SE10

Leasehold (984 years remaining)

***Offered to market on a chain-free basis and situated on the fifth floor of the ever popular River Gardens development, this charming and spacious apartment comes to market.***

### Key Features

- 2 Double Bedrooms
- 2 Bathrooms
- 4th Floor modern apartment
- Light and spacious
- Council Tax: **C**
- Service Charge: **£5,379.57 P/A**
- Ground Rent: **£400 P/A**
- Storage Cage & Parking
- Close to transport links
- EPC: **B**

The accommodation comprises; a welcoming entrance hallway with doors leading to all rooms, and two large built-in storage cupboards. Open plan reception room / kitchen (23'0 x 16'4) which is bright and offering views from all three windows. The kitchen has been thoughtfully arranged with an array of eye and base level units and integrated appliances, and there is also space in the reception room for a dining area.

Two double bedrooms both with built in wardrobes and master with ensuite bathroom and a separate family bathroom.

The River Gardens Development is Greenwich's premier development, offering residents access to gym facilities, as well as a swimming pool, tennis courts & concierge services. Residents of Granite Apartments also have the added benefit of a storage cage located in the underground secure car park.





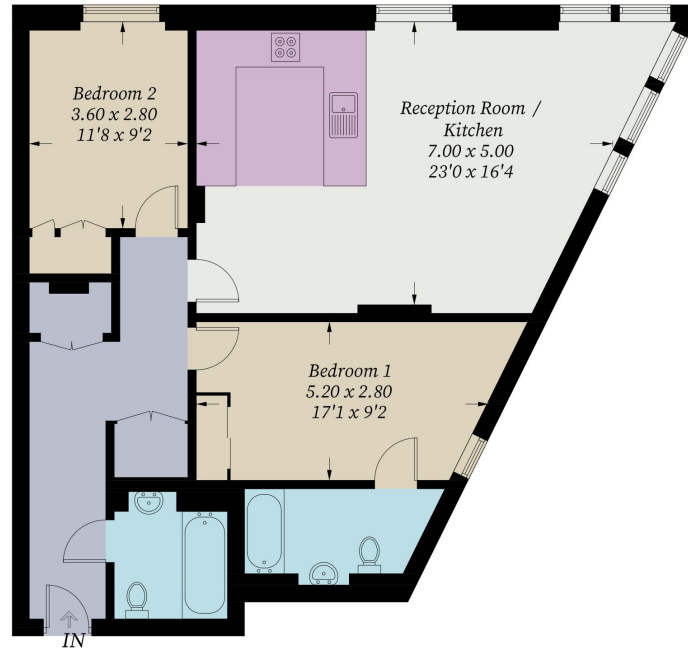






## Granite Apartments, SE10

Approximate Gross Internal Area = 84.9 sq m / 914 sq ft



*Fourth Floor*

Illustration for identification purposes only, measurements are approximate, not to scale. Fourlabs.co © (ID1168396)

22 College Approach, Greenwich,  
London, SE10 9HY  
Tel: 020 7399 5595

**Sales, Lettings & Property Management**

**[residential.jll.co.uk](https://residential.jll.co.uk)**

