



Corvette Square, Greenwich, London, SE10 9NH



Corvette Square, Greenwich, SE10

Leasehold (89 years remaining)

Boasting an impressive 45 ft. private garden, this rarely available split level maisonette comes to market just moments from Greenwich Park. Offering a generous 904 sq. ft. of internal space, this is the perfect property for first time buyers & families alike.

Key Features

- Three Double Bedrooms
- 45 Ft. Private Rear Garden
- 5-Minutes from Greenwich Park
- 7-Minutes from Maze Hill Station
- Service Charge: **£1,649 P/A**
- No ground rent
- EPC Rating: **D**
- Council Tax Band: **C**

The accommodation comprises; a welcoming entrance hallway with two large storage cupboard and doors leading to all rooms. The kitchen is situated to the front of the property and has been thoughtfully arranged with an array of eye and base level units and integrated appliances. The wall is open into the dining room, creating an excellent entertaining space & the perfect environment for family living. The dining room is to the rear of the property, offering views over the private garden behind, and flows effortlessly into the 12'5 x 9'7 reception room with a single door leading out to the impressive 45' private garden. The garden has been cleverly designed with a decked area directly to the rear of the property, perfect for sitting out in the summer months and the rest laid to lawn.

To the first floor, there are three-bedrooms and a family bathroom. The main bedroom is to the rear of the property and is a large double at 12'7 x 9'7, the second bedroom boasts built-in storage space and is a second double in the middle. The final bedroom is a smaller double also with built-in storage. Completing the property is the family bathroom.



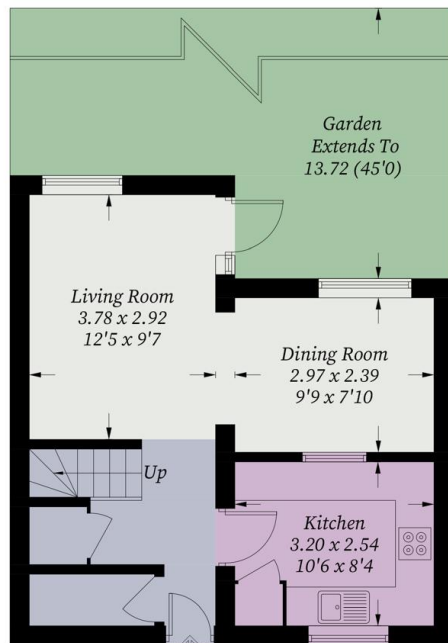




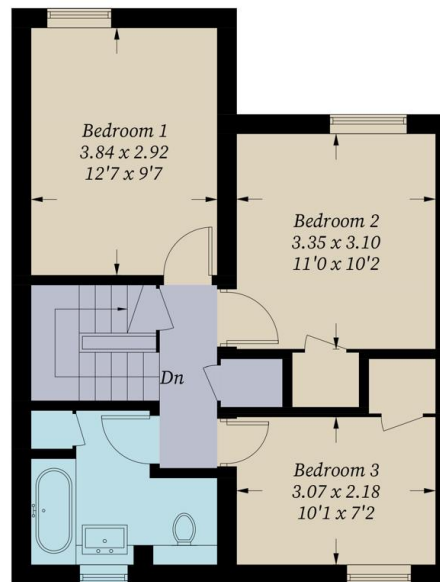


Corvette Square

Approximate Gross Internal Area = 84.0 sq m / 904 sq ft



Ground Floor



First Floor

Illustration for identification purposes only, measurements are approximate, not to scale. Fourlabs.co © (ID1192415)

22 College Approach, Greenwich,
London, SE10 9HY
Tel: 020 7399 5595

Sales, Lettings & Property Management

residential.jll.co.uk

