



Henry Hudson Apartments, 41 Banning Street, Greenwich SE10 0FE



Henry Hudson, Greenwich, London, SE10

Leasehold (985 years remaining)

A superb River view apartment in a highly desirable location between Cutty Sark DLR/Greenwich Village and the O2 Arena with no onward chain.

Key Features

- 2 Double bedrooms, 2 Bathrooms
- Balcony with stunning river views
- Secure underground parking
- Council Tax: **C**
- Service Charge: **£5,500 P/A**
- Ground Rent: **£400 P/A**
- Close to transport links
- EPC: **B**

Occupying a prominent position overlooking the Thames is this stylish and contemporary apartment, which has the benefit of secure underground parking and 24hr concierge.

This immaculate accommodation offers an open plan lounge dining and kitchen area which opens on to the terrace which offers some of the best views of the river Thames. There are two double bedrooms, with an ensuite to the master and a contemporary bathroom.

The River Gardens is conveniently located along the Thames path, enabling access to the Centre of Greenwich a breeze with its weekend markets, traditional pubs, modern bars, cinemas and local shops together with amazing transport links from the Cutty Sark DLR and mainline stations.

Early viewings are highly recommended.









Henry Hudson

Approximate Gross Internal Area = 71 sq m / 764 sq ft

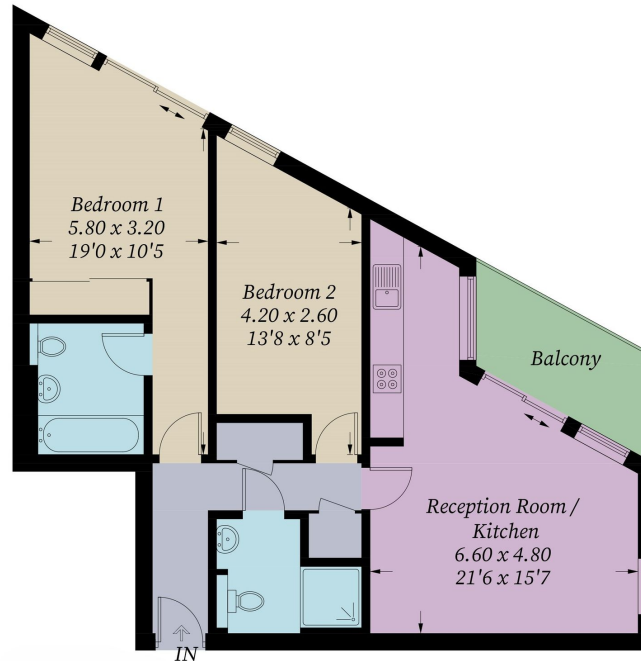


Illustration for identification purposes only, measurements are approximate, not to scale. Fourlabs.co © (ID1180801)

22 College Approach, Greenwich,
London, SE10 9HY
Tel: 020 7399 5595

Sales, Lettings & Property Management

residential.jll.co.uk

