



Molten Court, Moulding Lane, London, SE14 6FA

Molten Court, Moulding Lane, London, SE14

Leasehold (993 years remaining)

This beautifully presented apartment with a private balcony, situated on the 1st floor, forms part of the Deptford Anthology development

Key Features

- 1 Bedroom
- Private Balcony
- 12-Hour Concierge
- Council Tax: C
- Service Charge: **£3.200 P/A**
- Ground Rent: **£420 P/A**
- Walk to many transport links
- EPC: B

The property is light and spacious throughout and comprises of: the entrance hall with two large double cupboards; an open plan kitchen, living, and dining area (21'8 x 14'2 sq ft) which opens onto a private balcony overlooking landscaped courtyard; a good-sized double bedroom with built in wardrobes; and a contemporary family bathroom.

The property benefits from a 12 Hour concierge service and secure bicycle storage, with access to a range of green spaces nearby.

Anthology Deptford Foundry is an exclusive development in the unique and thriving location of Deptford, South East London. Deptford is host to a range of bars and restaurants catering to all tastes, as well as local shops for every need. Greenwich, Bermondsey, and Canada Water are all a short distance away by foot, bike, or public transport.

Positioned near multiple cycle routes, close by to New Cross and Deptford stations, and with Deptford Bridge DLR also within walking distance, this makes Anthology Deptford Foundry the ideal location for working and living in London.



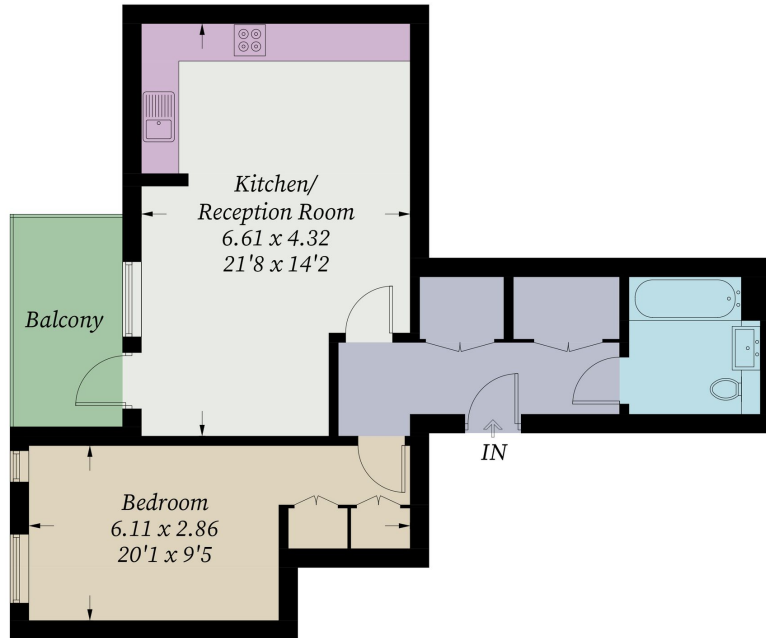






Molten Court

Approximate Gross Internal Area = 56.7 sq m / 610 sq ft



First Floor

Illustration for identification purposes only, measurements are approximate,
not to scale. Fourlabs.co © (ID1176009)