



*Reminder Lane, Greenwich, London, SE10 0NQ*



## Reminder Lane, Greenwich, London, SE10

Leasehold (229 years remaining)

***Situated on the 8th floor, this chain-free flat comes to market offering impressive views over Canary Wharf With the additional benefit of a 24-hour residents concierge and residents gym.***

### Key Features

- 2 Bedrooms, 2 Bathrooms
- Bright and spacious interiors
- Clever Walk-in Wardrobe
- Perfect for First Time Buyers
- Council Tax: **C**
- Service Charge: **£3,791 P/A**
- Ground Rent: **£446 P/A**
- Walk to North Greenwich station
- Chain Free
- EPC: **B**

The accommodation comprises; an entrance hallway with storage cupboard and doors leading to the living space, second bedroom and family bathroom. The open plan reception room / kitchen is a generous size at 24'3 x 15'11 with two large windows and door leading out to the private 18'2 balcony offering impressive views. The kitchen has been thoughtfully arranged with an array of eye and base level units and integrated appliances and has been finished with high quality stone worksurfaces. The primary bedroom is a good sized double with access onto the balcony, walk-in-wardrobe, providing ample storage and en-suite shower room. The second bedroom is also a good sized double room and completing the property is the family bathroom.

Laid out over three floors, this is the perfect property for first time buyers & downsizers alike being only a 10-minute walk from North Greenwich Station.















## Reminder Lane, SE10

Approximate Gross Internal Area = 73.5 sq m / 791 sq ft

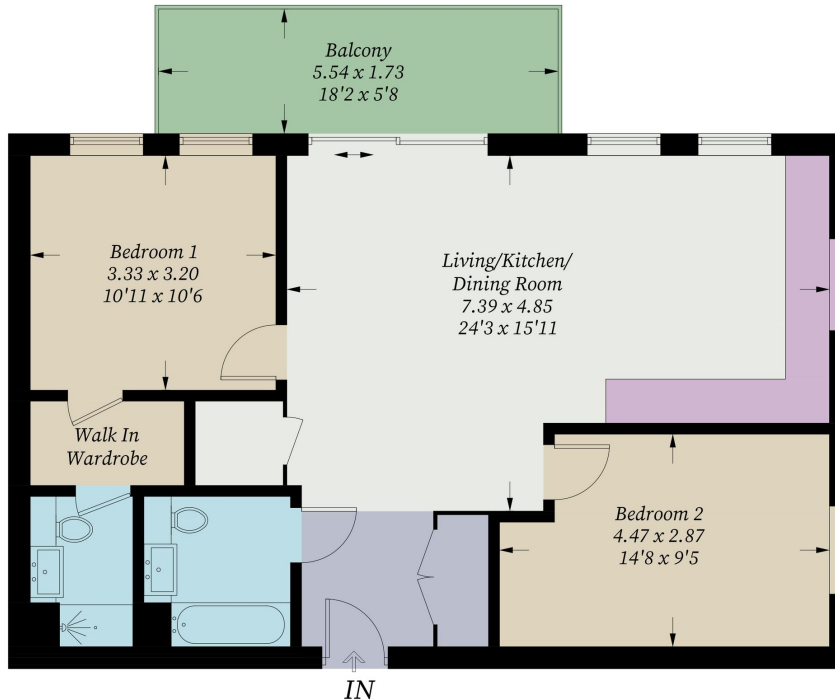


Illustration for identification purposes only, measurements are approximate, not to scale. Fourlabs.co © (ID1174373)

22 College Approach, Greenwich,  
London, SE10 9HY  
Tel: 020 7399 5595

**Sales, Lettings & Property Management**

**[residential.jll.co.uk](https://residential.jll.co.uk)**

