



City Peninsula, 25 Barge Walk, Greenwich, London SE10 0FP



## City Peninsula, Barge Walk, London, SE10

Leasehold (232 years remaining)

***Welcome to City Peninsula. Offering stunning views over the River Thames from the twelfth floor, this spacious apartment offered to the market with the benefit of no upper-chain.***

### Key Features

- 2 Bedrooms
- 2 Bathrooms
- Parking
- Council Tax: C
- Service Charge: **£4,732 p/a**
- Ground Rent: **£300 p/a**
- Walk to transport links
- EPC: B

The accommodation comprises; a welcoming entrance hallway with doors leading to all rooms. The open plan reception room / kitchen is a generous size at 3.9m x 6.9m and has been tastefully decorated in natural tones. The balcony can be accessed from either the reception room or the primary bedroom and stretches the length of the flat, the perfect place to sit in the evenings with friends or loved ones enjoying the views over the River Thames below. The kitchen has been arranged with an array of eye and base level units and appliances, and is laid out across one wall, giving space for a dining table in the open plan space. The primary bedroom comes with built-in wardrobes and en-suite shower room, and the second bedroom is the perfect guest room or home office. Completing the property is the family bathroom, laid out with toilet, hand basin and bathtub.

Part of the popular City Peninsula development, offering on-site concierge services, the property is conveniently located close to local amenities and shops. Also located nearby is the O2 Arena





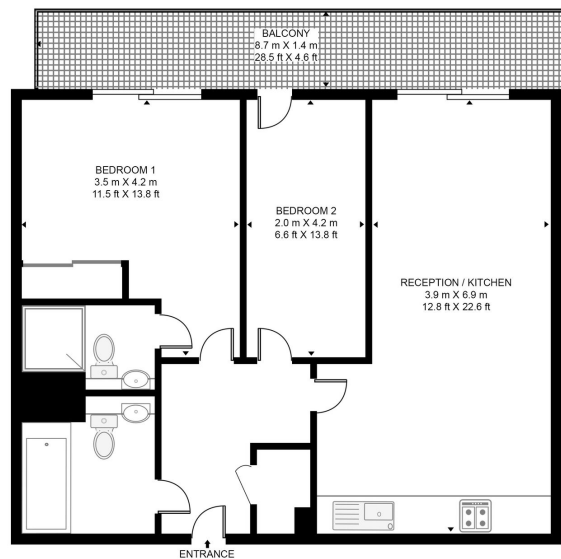






### BARGE WALK

APPROXIMATE GROSS INTERNAL FLOOR AREA 631 SQ.FT (58.6 SQ.M)



### TWELFTH FLOOR



**HDVA**

This floor plan has been defined by the RICS Code of Measurement. This floor plan and all others are for approximate representative purposes only and upon usage is agreed to as such by the client.  
WWW: [hdvirtualart.com](http://hdvirtualart.com) | TEL: 0203.974.1567 | EMAIL: [info@hdvirtualart.com](mailto:info@hdvirtualart.com)

22 College Approach, Greenwich, London, SE10 9HY

**Sales, Lettings & Property Management**

Tel: 020 8858 9986

**[residential.jll.co.uk](http://residential.jll.co.uk)**

