



Cavatina Point, 3 Dancers Way, London SE8 3FG



Cavatina Point, 3 Dancers Way, London, SE8

Leasehold (109 years remaining)

Introducing the most stunning apartment with incredible views over the Thames and Canary Wharf.

Key Features

- 3 Double bedrooms
 - Top floor
 - Underground parking space
 - Council Tax: **D**
 - Communal roof terrace
 - Balcony
 - Service Charge: **£6,530.40 P/A**
 - Walk to mainline and DLR
 - No ground rent
 - EPC: **B**
-

This three bedroom apartment spans some 874 Sq Ft and offers a modern fitted kitchen, dining space and open plan lounge, this in turn opens onto a balcony with those incredible panoramic views. There are three good size bedrooms and a family bathroom.

This property also has the added benefit of secure parking, a communal roof terrace and concierge. Located just a short stroll into Historical Royal Greenwich we feel that this property stands out in the market today.

Early viewings are highly recommended.









Cavatina Point, SE10

Approximate Gross Internal Area = 81.1 sq m / 874 sq ft

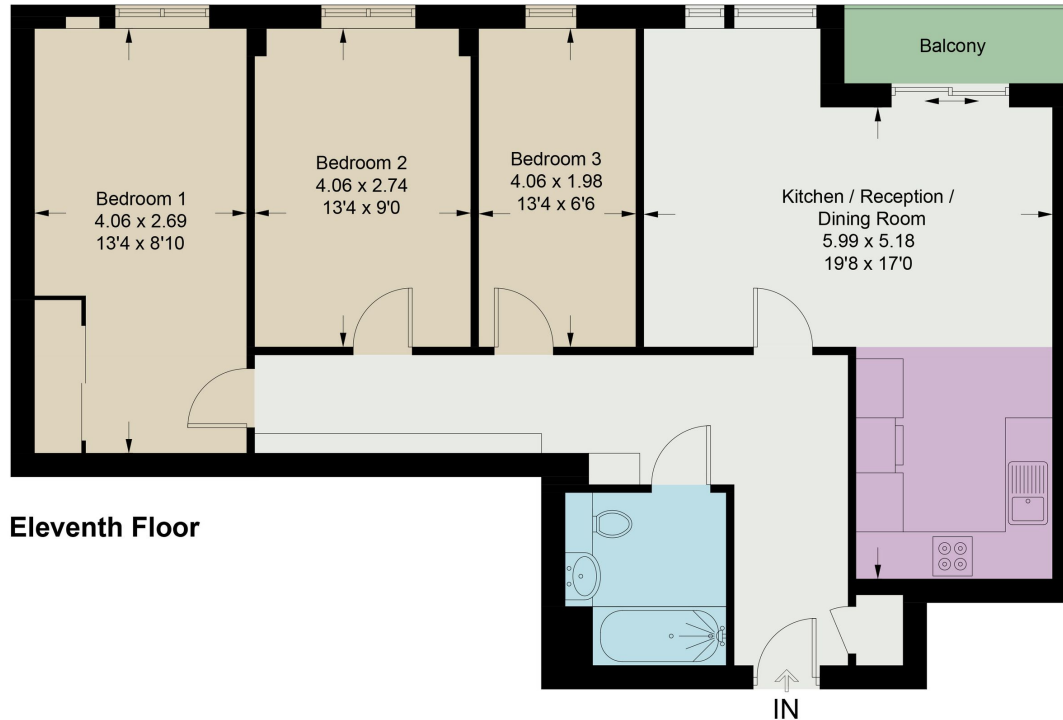


Illustration for identification purposes only, measurements are approximate, not to scale. Fourlabs.co © (ID1157330)

22 College Approach, Greenwich,
London, SE10 9HY
Tel: 020 7399 5595

Sales, Lettings & Property Management

residential.jll.co.uk

