



Atlantic Point, Harrison Walk, Greenwich, London, SE10 0YL



Atlantic Point, Harrison Walk, Greenwich, SE10 leasehold

Boasting circa 849 sq. ft of internal space, and occupying a prime position on the Thames, with a south-facing balcony that offers breathtaking views of the river, this stunning flat is perfect for first time buyers & downsizers alike

Key Features

- South-Facing Balcony
- Approx. 841 Sq. Ft.
- Allocated Underground Parking
- On-Site Gym, Swimming Pool and Tennis Court & 24-Hour Concierge
- Lease Length: 991 Years
- Service Charge: £4,800 P/A
- Ground Rent: £350 P/A
- Council Tax Band: E
- EPC Rating: B

The Property

The accommodation comprises; a welcoming entrance hallway with doors leading to all rooms and a large utility cupboard, providing excellent storage and housing the washer / dryer. The reception room is a generous size at 19'1 x 11'2 with a door leading out to the large south-facing balcony, perfect for sitting out in the summer months enjoying a glass of wine with friends and taking in the view of the River Thames and Canary Wharf beyond. The kitchen has been thoughtfully arranged with an array of eye and base level units, integrated appliances, and finished with high-quality stone work surfaces. The primary bedroom is a generous double benefitting from built-in wardrobes and an en-suite shower room, the current owners also have a desk in here, perfect for working from home, and looking out over the river & beyond. The second bedroom is also a generous double room at 12'1 x 11'3, and completing this fantastic property is the family bathroom, complete with toilet, hand basin and bathtub.





The Development

Atlantic Point is part of the River Gardens development which is arguably one of the most popular riverside developments in Greenwich, and is located just east of the old Naval College. Residents are offered a wide range of facilities including access to a residents gym, swimming pool and tennis courts, as well as a 24-hour concierge service. The town centre is only a short walk away which gives access to a superb array of shops and restaurants. All this within a short walk from excellent transport links including: two mainline rail stations, the DLR, Jubilee line and Thames Clipper piers.

One of the key highlights of Atlantic Point is its location along the River Thames. Greenwich is a vibrant and sought-after area with a rich history and a vibrant cultural scene. It is home to iconic attractions such as the Royal Observatory, the Cutty Sark, and the Royal Greenwich Park, which offers stunning views of London's skyline.



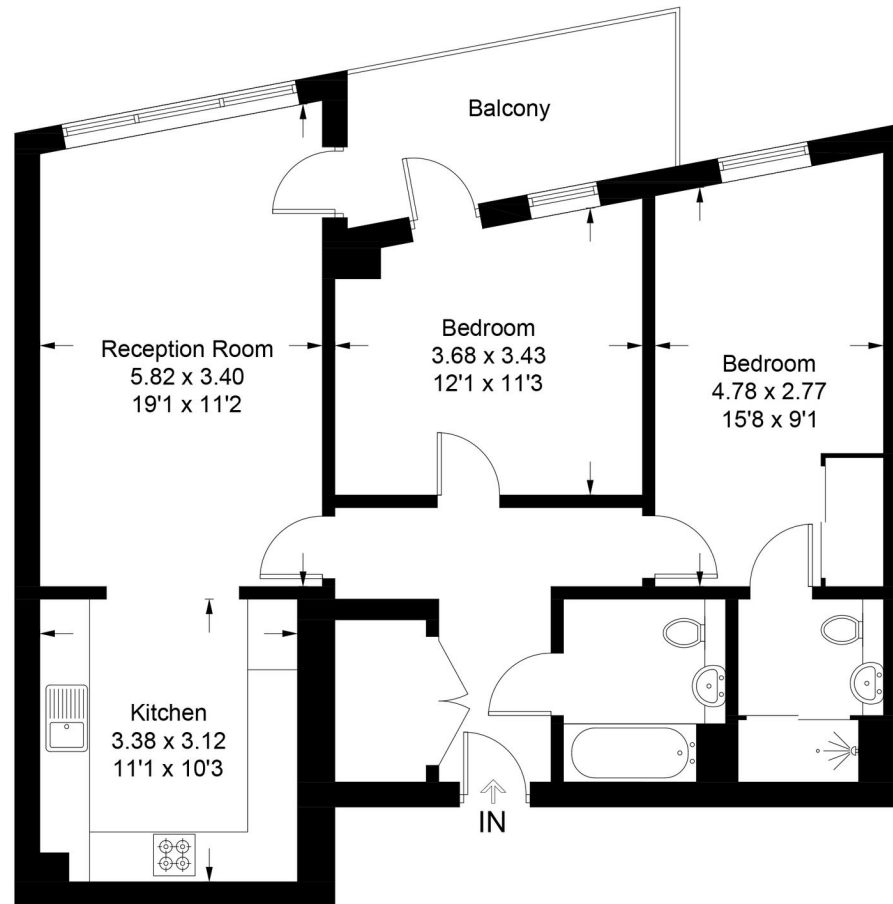






Atlantic Point, SE10

Approximate Gross Internal Area = 78.9 sq m / 849 sq ft



Third Floor

Illustration for identification purposes only, measurements are approximate, not to scale. Fourlabs.co © (ID1145677)

22 College Approach, Greenwich,
London, SE10 9HY
Tel: 020 7399 5595

Sales, Lettings & Property Management

residential.jll.co.uk

