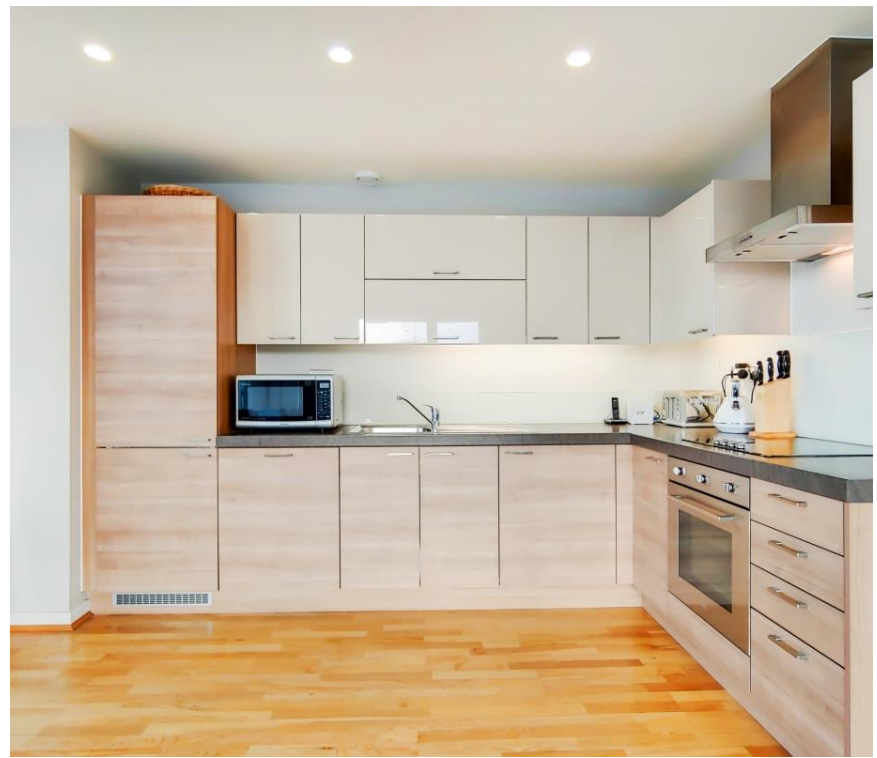
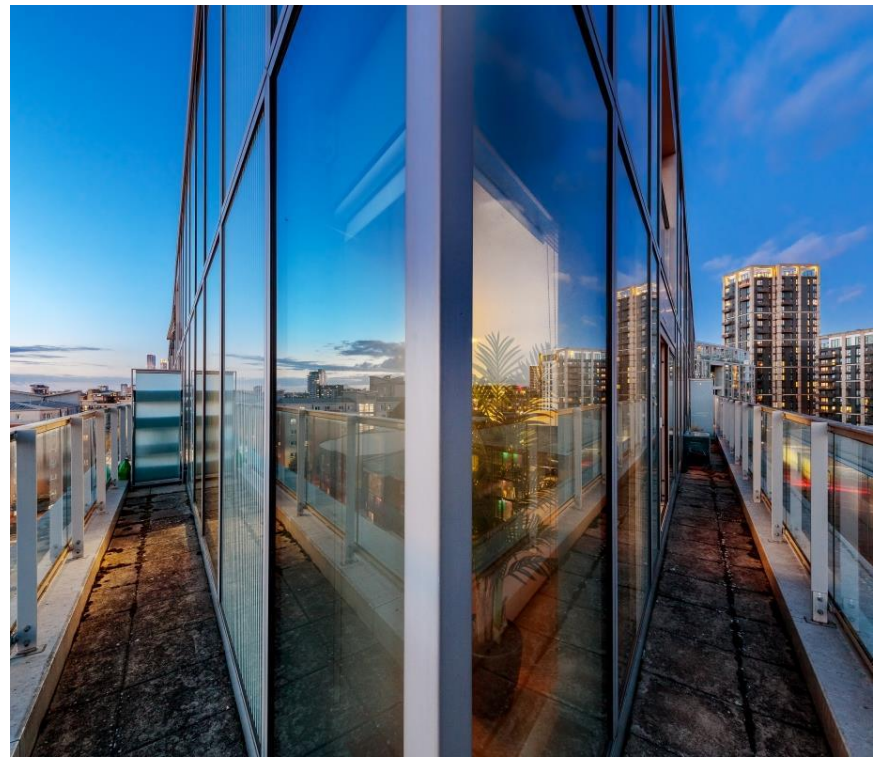




Atrium Heights, London SE8

Guide price £600,000 Leasehold





Description

A bright and spacious sixth floor, two bedroom, two bathroom apartment situated in this stunning block within walking distance of the Cutty Sark DLR, Greenwich mainline and Greenwich village.

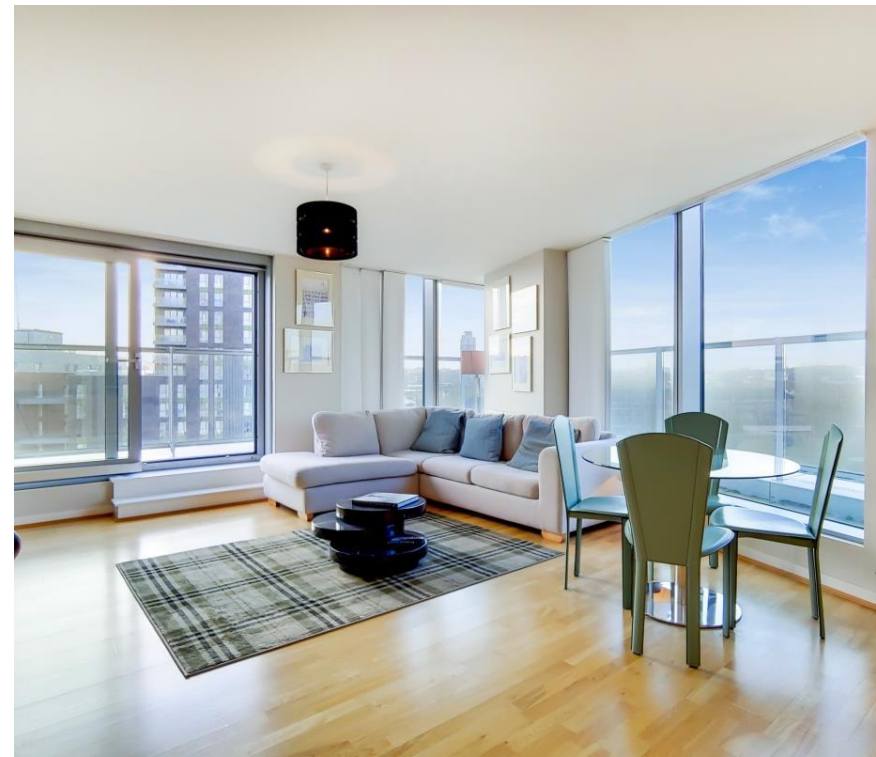
Presented in immaculate condition throughout with a south-west facing wrap around balcony with far reaching views.

The property benefits from a dual aspect, secure underground parking and 24 hour concierge. The property is situated in the favoured Atrium Tower with its impressive grand entrance.

The sixth floor Southerly aspect has views of the Creek and The Laban dance school as well as Greenwich Park in the distance.

Early viewings are highly recommended.

- 2 Bedrooms
- 2 Bathrooms
- Wrap around balcony
- Beautifully presented throughout
- Secure underground parking
- 6th Floor modern apartment
- Approx. 758 sq ft (70.4 sq m)
- EPC: C



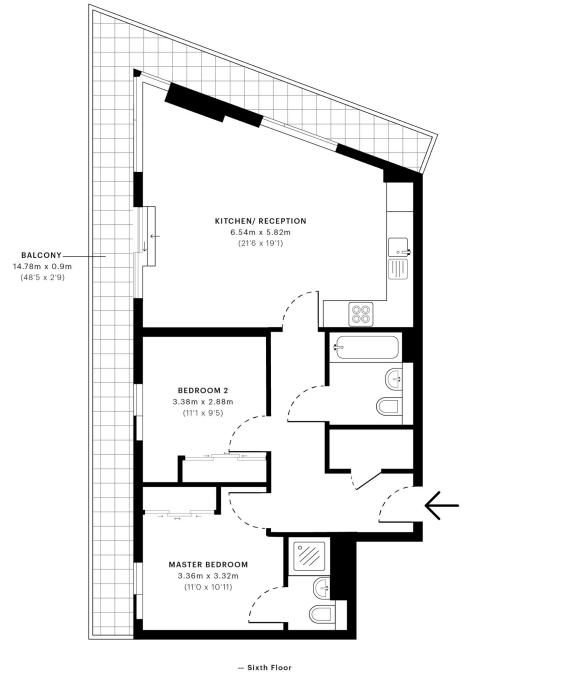


Atrium Heights, SE8

CAPTURE DATE
18/12/2019

LASER SCAN POINTS
34,189,279

GROSS INTERNAL AREA
69.7 Sqm / 749.8 Sqft



GROSS INTERNAL AREA (GIA)
The footprint of the property.
69.7 Sqm / 749.8 Sqft

NET INTERNAL AREA (NIA)
Excludes walls and external features.
Includes wardrobes, restricted head.
66.8 Sqm / 718.6 Sqft

EXTERNAL STRUCTURAL FEATURES
Balconies, terraces, verandas etc.
19.0 Sqm / 204.8 Sqft

RESTRICTED HEAD HEIGHT
Limited use area under 1.5m
0.0 Sqm / 0.0 Sqft



Spec floor plans are produced in accordance with the Royal Institution of Chartered Surveyors' Property Measurement Standards. Plots and gardens are illustrative only and are excluded from all area calculations. Due to rounding, numbers may not add up precisely. All measurements shown for the individual room lengths and widths are the maximum points of measurements captured in the scan.



IPMS 3B RESIDENTIAL
90.3 Sqm / 972.5 Sqft

IPMS 3C RESIDENTIAL
87.4 Sqm / 941.3 Sqft

SPEC ID
5df8a189dfaf60c8b0fcd80

Greenwich
22 College Approach,
London SE10 9HY
02088589986
lettingsgreenwich@eu.jll.com

Urban living, your way.

jll.co.uk/residential

© 2019 Jones Lang LaSalle IP, Inc. All rights reserved. All information contained herein is from sources deemed reliable; however, no representation or warranty is made to the accuracy thereof.

