



Forbes Apartments, 6 Brigadier Walk, London SE18 6NZ



## Forbes Apartments, London, SE18

Leasehold (996 years remaining)

***A light and spacious apartment on the 6th floor which forms part of the Woolwich Arsenal Riverside development.***

### Key Features

- 1 Bedroom
- 1 Bathroom
- Private balcony
- Council Tax: **C**
- Service Charge: **£2,638.17 P/A**
- Ground Rent: **£1 P/A**
- Close to Elizabeth line
- EPC: **B**

---

The accommodation comprises hallway with a built in cupboard which then opens onto an open-plan living room / dining room and kitchen that leads onto a private balcony. One double bedroom with built in wardrobe and a separate family bathroom. The property benefits from floor to ceiling windows and doors which floods with plenty of natural light and engineered timber wood flooring.

Woolwich Arsenal Riverside development provides exclusive access to resident amenities, including 24hr concierge, gym, pool and sauna! Its also well located for the Elizabeth line which is only a 7 minute walk and provides great connections for both Canary Wharf, City and Westend.

Early viewings are highly recommended









## Forbes Apartments, SE18

Approximate Gross Internal Area = 51.00 sq m / 549 sq ft

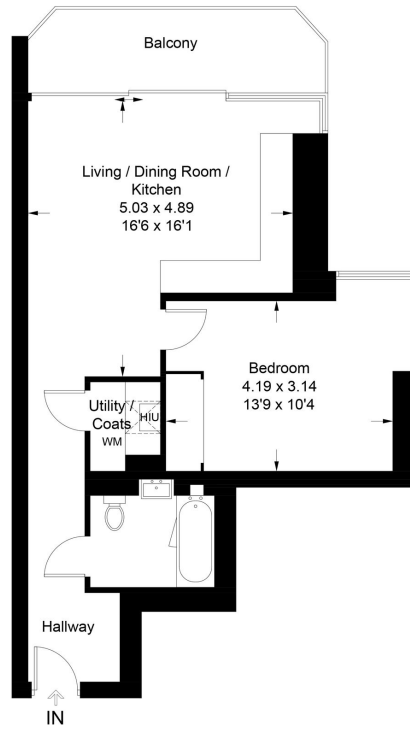


Illustration for identification purposes only, measurements are approximate,  
not to scale. Fourlabs.co © (ID1132540)

22 College Approach, Greenwich,  
London, SE10 9HY  
Tel: 020 7399 5595

**Sales, Lettings & Property Management**

[residential.jll.co.uk](http://residential.jll.co.uk)

