



Wallace Court, 52 Tizzard Grove, Blackheath, London SE3 9FE



Wallace Court, Tizzard Grove, London, SE3

Leasehold (986 years remaining)

Located in the Blackheath Quarter of Kidbrooke Village, this spacious and stunning apartment comes to market with secure underground parking.

Key Features

- 3 double bedrooms
- 2 Bathrooms
- 2 Balconies
- Excellent amenities for residents
- Council Tax: **E**
- Service Charge: **£7,064 p/a**
- Ground Rent: **£400 p/a**
- EPC: **B**

The accommodation comprises; a welcoming entrance hallway with multiple large built-in storage cupboards and a utility cupboard as well as doors leading to all rooms. The bright and airy reception room is a generous open-plan space with a good sized balcony offering views over the private first floor residents-only gardens below. The kitchen boasts high end NEFF integrated appliances and has been finished with beautiful stone countertops.

The main bedroom is a generous double room at 18'7 x 12'1 and benefits from access to a second balcony on the other side of the property, as well as an en-suite bathroom. The second bedroom is also a larger than average double room with Juliet-balcony and built-in wardrobes, and the third bedroom, also a double is perfect as a children's bedroom, guest room, or home office. Completing the property is the family shower room.









Wallace Court, SE3

Approximate Gross Internal Area = 99.3 sq m / 1069 sq ft

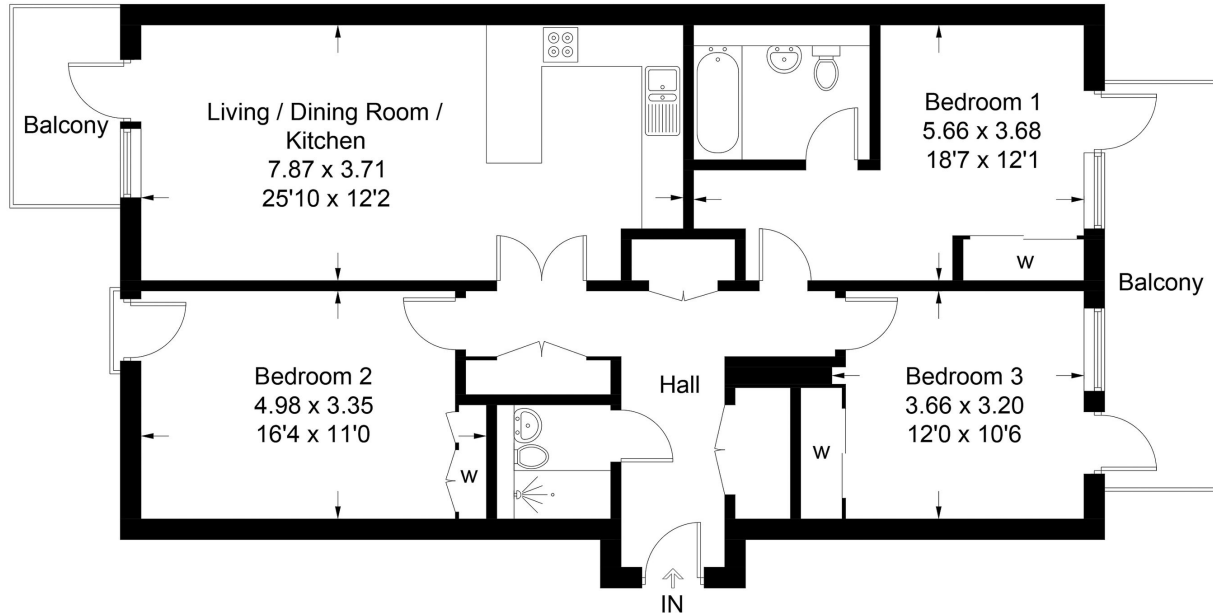


Illustration for identification purposes only, measurements are approximate, not to scale. floorplansUsketch.com © (ID1109406)

22 College Approach, Greenwich, London, SE10 9HY

Sales, Lettings & Property Management

Tel: 020 8858 9986

residential.jll.co.uk

