



Caradoc Street, Greenwich, London, SE10 9AG



Caradoc Street, Greenwich, SE10 9AG

Freehold

Located on the ever popular Caradoc Street, this stunning Victorian home, originally built between 1834- 1839, comes to market having been lovingly refurbished to an incredibly high standard by the current owners.

Key Features

- Two Double Bedrooms
- Recently Refurbished Throughout
- Private Low Maintenance Garden
- East Greenwich Conservation Area
- Stunning Victorian Home
- Perfect First Home
- DLR & Thameslink Connections
- Tenure: **Freehold**
- EPC Rating: **D**
- Council Tax Band: **D**

The accommodation comprises; a cosy reception room with an exposed brick fireplace and herringbone wooden floors, leading to the dining room/kitchen. The kitchen is recently fitted and thoughtfully designed with a second exposed brick chimney the currently owners have cleverly incorporated providing extra storage. A door leads to a low maintenance garden with planting areas and ample seating space. The downstairs also includes a beautifully finished bathroom with a bathtub, shower attachment, toilet, and hand basin.

On the first floor, there are two equal-sized double bedrooms. The front bedroom is decorated in neutral tones and offers views of the picturesque street below. It also has a built-in desk for home working. The rear bedroom overlooks the garden and is spacious at 12'10 x 10'6.



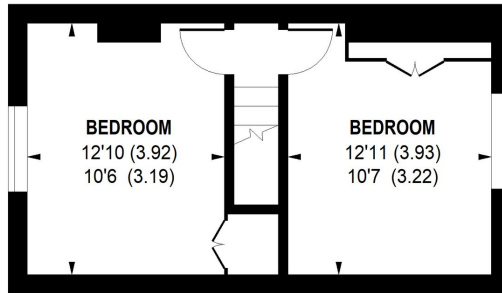




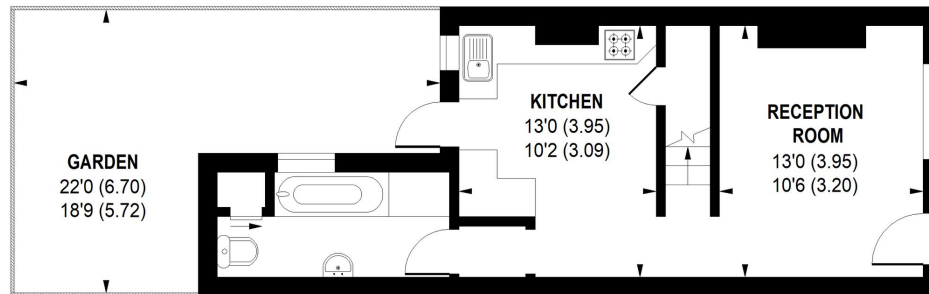


**Caradoc Street,
Greenwich, SE10**

Approximate Internal Area = 688 sq ft / 63.92 sq m



FIRST FLOOR



GROUND FLOOR

Not to scale, for guidance only and must not be relied upon as a statement of fact.
All measurements and areas are approximate only

22 College Approach, Greenwich, London, SE10 9HY

Sales, Lettings & Property Management

Tel: 020 8858 9986

residential.jll.co.uk

