



Europa House, 7 NO One Street, Woolwich, London SE18 6HP



Europa House, No one street, London, SE18

Leasehold (992 years remaining)

***This is a fantastic apartment with spectacular views.
Located in the sought after Royal Arsenal development
with concierge, gymnasium and beauty spa facilities for
residence.***

Key Features

- 2 Bedrooms, 2 Bathrooms
- Private balcony
- Light and spacious
- Council Tax: D
- Service Charge: £5,217.92 p/a
- Ground Rent: TBC
- Close to transport links
- EPC: B

The accommodation comprises large open hallway with built in cupboards which leads into a reception room / kitchen area with access onto a private balcony. Two double bedrooms, master with built in wardrobes and access into an en-suite bathroom and a separate family shower room.

Europa House is conveniently located close to Woolwich Arsenal Station, which provides access to the Docklands Light Railway (DLR) and South eastern train services. The area is also well-served by buses and offers easy access to major road networks.

In addition to transport links, Woolwich offers a range of amenities and attractions. You'll find a variety of shops, cafes, restaurants, and leisure facilities within walking distance of Europa House. There are also several green spaces, including Woolwich Common and Royal Arsenal Riverside.









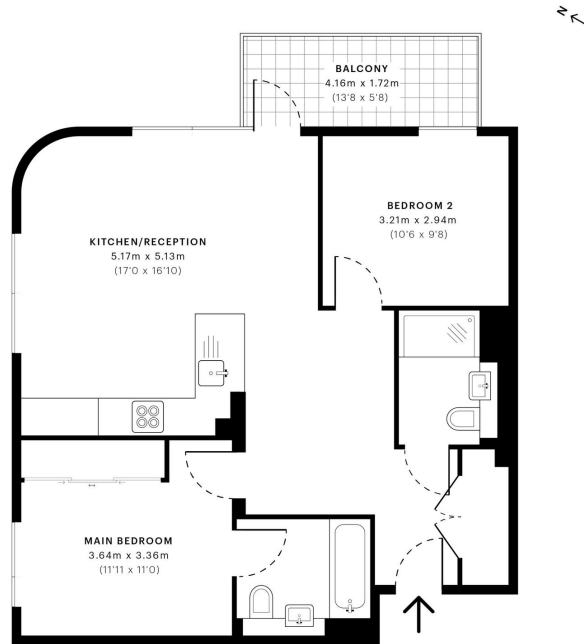


Europa House, SE18

CAPTURE DATE: 28/01/2021 LASER SCAN POINTS: 2,402,592

GROSS INTERNAL AREA

69.87 sqm / 752.07 sqft



— Third Floor

 **GROSS INTERNAL AREA (GIA)**
The footprint of the property
69.87 sqm / 752.07 sqft

 **NET INTERNAL AREA (NIA)**
Excludes walls and external features
Includes washrooms, restricted head height
66.69 sqm / 717.85 sqft

 **EXTERNAL STRUCTURAL FEATURES**
Balconies, terraces, verandas etc.
6.70 sqm / 72.12 sqft

 **RESTRICTED HEAD HEIGHT**
Limited use area under 1.8 m
0.83 sqm / 8.93 sqft

22 College Approach, Greenwich, London, SE10 9HY

Sales, Lettings & Property Management

Tel: 020 8858 9986

residential.jll.co.uk

