



Casting House, Moulding Lane, London SE14 6BN



Casting House, Moulding Lane, London, SE10

Leasehold (990 years remaining)

A light and spacious, modern apartment in the exciting, new Anthology Deptford Foundry development, a short walk to the Thames and Greenwich.

Key Features

- 2 Double bedrooms
- 2 Bathrooms
- EWS1 Compliant
- Council Tax: D
- Service Charge: £3,852 p/a
- Ground Rent: £510 p/a
- Great storage
- EPC: B

Accommodation

The apartment is located on the 4th floor and accommodation comprises; large entrance hallway with built-in cupboards with excellent storage, spacious open plan reception room kitchen area with a range of integrated appliances and leads to a large, private balcony with far reaching views.

Two good sized bedrooms, master with built in wardrobes and en-suite bathroom and a separate modern contemporary family bathroom.

The property is decorated in neutral tones throughout and ready to move into.





Sellers Comments

Beyond the undeniable convenience of a quick commute into Central London thanks to the excellent rail connections from both New Cross and Deptford stations, what we've truly cherished about Deptford Foundry is the fantastic sense of community. It's fostered a friendly atmosphere amongst neighbours, something we'll miss dearly.

The flat itself has offered the perfect backdrop – it's the ideal blend of modern and homely. The spacious layout has provided ample room to relax and unwind, yet the design choices have created a warm and inviting atmosphere. The amazing sunrises and panoramic views have been a daily delight, transforming the living room into a private viewing platform for the most spectacular sunrises. Waking up to those views never got old!

Deptford itself offers a vibrant energy that's hard to beat. The mix of cafes, independent shops, parks, and playgroups has made every day exciting. We've loved exploring the area with our little one and know the new owners will find Deptford just as captivating, offering a perfect blend of easy access to the city and a vibrant, friendly neighbourhood.



Outside

Casting House forms part of Anthology Deptford Foundry and sits on the site of a former metal foundry formed in 1831 by engineer Josiah Stone. Its position in the heart of one of south east London's most vibrant and creative neighbourhoods and extremely well located for New Cross and Deptford mainline stations which provides excellent links to Canada Water (5mins), London Bridge (7mins), Cannon Street (10mins) Canary Wharf (20mins) and London's West End (25mins).

The property also benefits from secure bike storage and a 12 hour concierge service. Anthology Deptford Foundry offers a unique blend of artist studios and contemporary residential apartments, providing a unique community feel to the development.

SE14 is well-known for its vibrant community and rich cultural scene. The area offers various amenities, including shops, cafes, restaurants, and leisure facilities. Additionally, nearby green spaces like Telegraph Hill Park and Pepys Park provide opportunities for outdoor activities and relaxation.









Approximate Gross Internal Area = 70.0 sq m / 753 sq ft

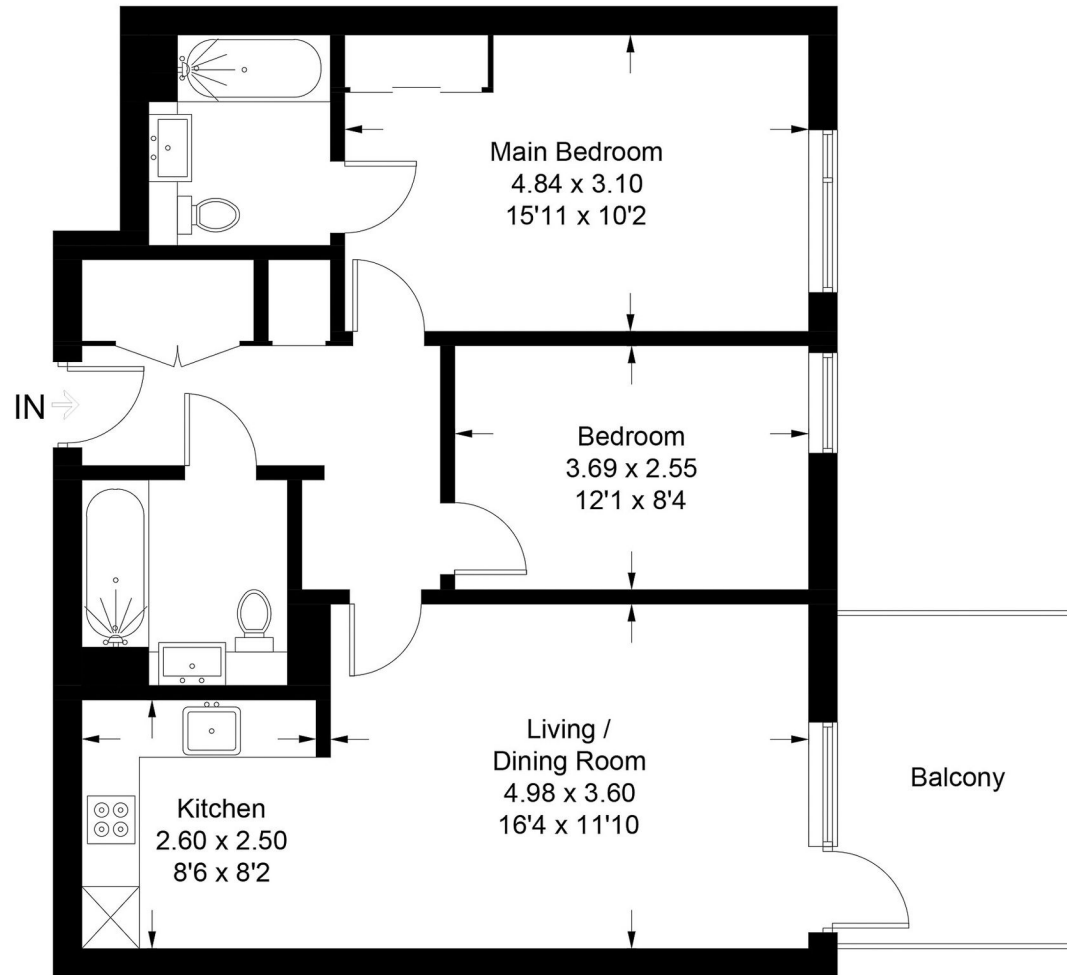


Illustration for identification purposes only, measurements are approximate, not to scale. floorplansUsketch.com © (ID1102811)

22 College Approach, Greenwich, London, SE10 9HY

Tel: 020 8858 9986

Sales, Lettings & Property Management

residential.jll.co.uk

