



Winforton Street, Greenwich, London SE10 8UR



## Winforton Street, Greenwich, SE10

Freehold

***A spacious and attractive terraced house situated in one of the most prestigious parts of West Greenwich and within walking distance of Greenwich mainline.***

### Key Features

- 3 Double bedrooms
- 1 Bathroom + downstairs WC
- Beautifully landscaped rear garden
- West Greenwich Conservatory Area
- Walk to Cutty Sark DLR station
- Council Tax: D
- Terraced house
- EPC: C

---

The accommodation is arranged over two floors and comprises: entrance hall with access to a downstairs cloakroom, good sized reception room (16'2" x 10'8") and to the back of the property is a kitchen / dining area which leads onto a beautifully landscaped rear garden. The first floor offers three double bedrooms and a family bathroom which consists of a bath tub, toilet, sink and shower.

Winforton Street is highly desirable, as it provides easy access to various amenities and attractions in the area. Notably, the famous Royal Greenwich Park is nearby, offering beautiful green spaces, panoramic views over London, and various recreational activities. Additionally, the historic Cutty Sark, Old Royal Naval College, and Greenwich Market are all within walking distance.





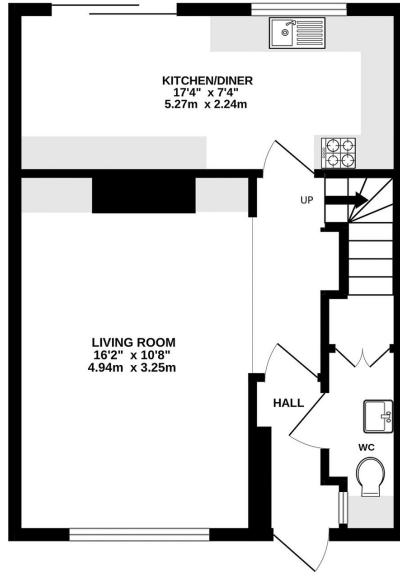




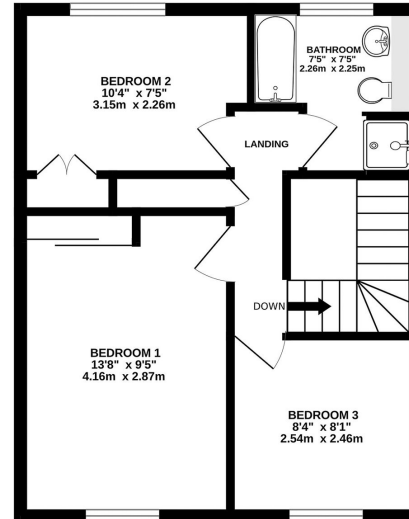




GROUND FLOOR  
415 sq.ft. (38.6 sq.m.) approx.



1ST FLOOR  
423 sq.ft. (39.3 sq.m.) approx.



TOTAL FLOOR AREA : 838 sq.ft. (77.9 sq.m.) approx.

Whilst every attempt has been made to ensure the accuracy of the floorplan contained here, measurements of doors, windows, rooms and any other items are approximate and no responsibility is taken for any error, omission or mis-statement. This plan is for illustrative purposes only and should be used as such by any prospective purchaser. The services, systems and appliances shown have not been tested and no guarantee as to their operability or efficiency can be given.

22 College Approach, Greenwich, London, SE10 9HY

Sales, Lettings & Property Management

Tel: 020 8858 9986

[residential.jll.co.uk](http://residential.jll.co.uk)

