



Washington Building, Deals Gateway, London SE13 0SE



Washington Building, Deals Gateway, SE13

Leasehold (103 years remaining)

Situated on the eighth floor, and boasting an impressive 18'5 x 15'7 private terrace, this stunning two bedroom apartment is offered to market in immaculate condition.

Key Features

- Large private terrace
- Concierge services
- Residents gym and swimming pool
- Separate balcony
- Council Tax: B
- Service Charge: £3,000 p/a
- Ground Rent: £264 p/a
- EPC: B

The accommodation comprises; a welcoming entrance hallway with doors leading to all rooms. The open plan reception room / kitchen is a generous size with access to both a large terrace, and a separate balcony, offering fantastic views. The kitchen has been thoughtfully arranged and includes integrated appliances, and the reception room has been tastefully decorated in neutral tones. The main bedroom is a good sized double room offering ample storage with the built-in wardrobes. The second bedroom is a slightly smaller double room, perfect as a guest room or a home office. Completing this unique property is the modern family bathroom.

The stunning terrace is perfect for sitting out in the summer months and entertaining friends and family, and benefits from fantastic views. There is a separate south-east facing balcony from the reception room, offering ample outside space for this property.





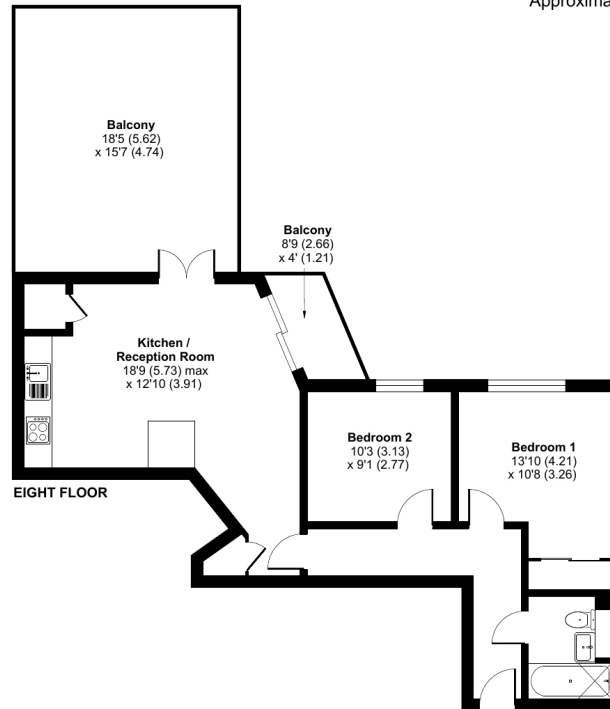




Washington Building, Deals Gateway, London, SE13

Approximate Internal Area = 640 sq ft / 59.4 sq m

For identification only - Not to scale



Floor plan produced in accordance with RICS Property Measurement Standards incorporating International Property Measurement Standards (IPMS2 Residential). © rlxhcom 2024. Produced for JLL Residential. REF: 1118042

22 College Approach, Greenwich, London, SE10 9HY

Sales, Lettings & Property Management

Tel: 020 8858 9986

residential.jll.co.uk

