



Cutter Lane, Greenwich, London SE10 0YX



Cutter Lane, Greenwich, London, SE10

Leasehold (235 years remaining)

Set on the 19th floor and offering impressive views over the Thames & the O2, this is a rare opportunity to own this fantastic home in the popular Cutter Lane.

Key Features

- 2 Bedrooms
- 2 Bathrooms
- 24-Hour concierge & cinema room
- Stunning interiors
- Council Tax: E
- Service Charge: £6,500 p/a
- Ground rent: £375 p/a
- EPC: B

The accommodation comprises; a welcoming entrance hallway with doors leading to all rooms and a utility cupboard. Both bedrooms are similarly sized double rooms at 15'7 x 9'10 & 12'5 x 8'7 respectively. The main bedroom comes with the additional benefit of an en-suite shower room, which has been finished to an exceptional standard. Both bedrooms offer impressive views over the Thames, and are south-facing, flooding the rooms with natural light. The reception room is located down a short flight of stairs. This stunning space has been tastefully decorated in neutral tones, with floor to ceiling windows, an impressive kitchen finished with integrated appliances, high end finishes and worksurfaces, and breath-taking views over the O2 from the room and the balcony, which also offers views over the river and out to Canary Wharf. Completing the flat is the family bathroom, laid out with toilet, hand basin and bathtub.



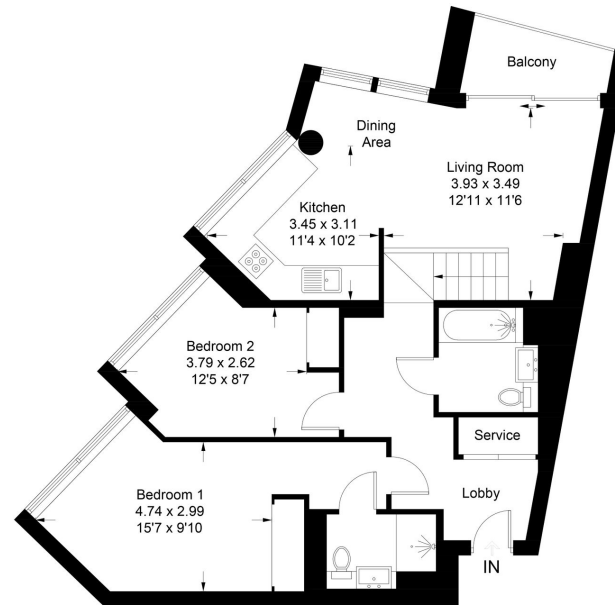






1902 Cutter Lane

Approximate Gross Internal Area = 77.2 sq m / 831 sq ft



Nineteenth Floor

Illustration for identification purposes only, measurements are approximate, not to scale. floorplansUsketch.com © (ID1073746)

22 College Approach, Greenwich, London, SE10 9HY

Sales, Lettings & Property Management

Tel: 020 8858 9986

residential.jll.co.uk

