



Old Sorting Office

GREENWICH PARK STREET, GREENWICH SE10



A selection of 9 contemporary 2 & 3 bedroom apartments located in the heart of Greenwich

Description

The Old Sorting Office in Greenwich, SE10 is a historic building with a rich heritage. It was originally built in the early 20th century as a sorting office for the Royal Mail. The building served as a central hub for sorting and distributing mail in and around the Greenwich area.

Located in the heart of Greenwich, the Old Sorting Office is a prime example of industrial architecture from the early 1900s. The exterior of the building features a distinctive red brick facade, large windows, and tall chimneys.

In recent years, the Old Sorting Office has been reimagined and transformed into a mixed-use development that combines commercial, residential, and cultural spaces. The building now offers a range of amenities, including offices, retail spaces, and community facilities.

The conversion of the Old Sorting Office has breathed new life into the area, providing a space for businesses to thrive while preserving the building's historical significance. The building's location in Greenwich is particularly appealing, as it is surrounded by a vibrant community and is within walking distance of many attractions, such as the Cutty Sark, the Royal Observatory, and Greenwich Park.

Overall, the Old Sorting Office in Greenwich, SE10 represents a successful blend of history, functionality, and modern design. It is a testament to the adaptive reuse of industrial buildings in urban settings, creating dynamic spaces that serve the needs of a contemporary community.

Old Sorting Office

Greenwich Park Street, Greenwich, SE10

- 2 & 3 Bedroom Apartments
- 2 Bathrooms
- Converted in The Old Sorting Office
- Gardens, Terraces or Balconies
- Quality fixtures and fittings
- Integrated appliances
- Close to local amenities
- Walk to Cutty Sark and Greenwich
- Share of Freehold
- EPC: TBC

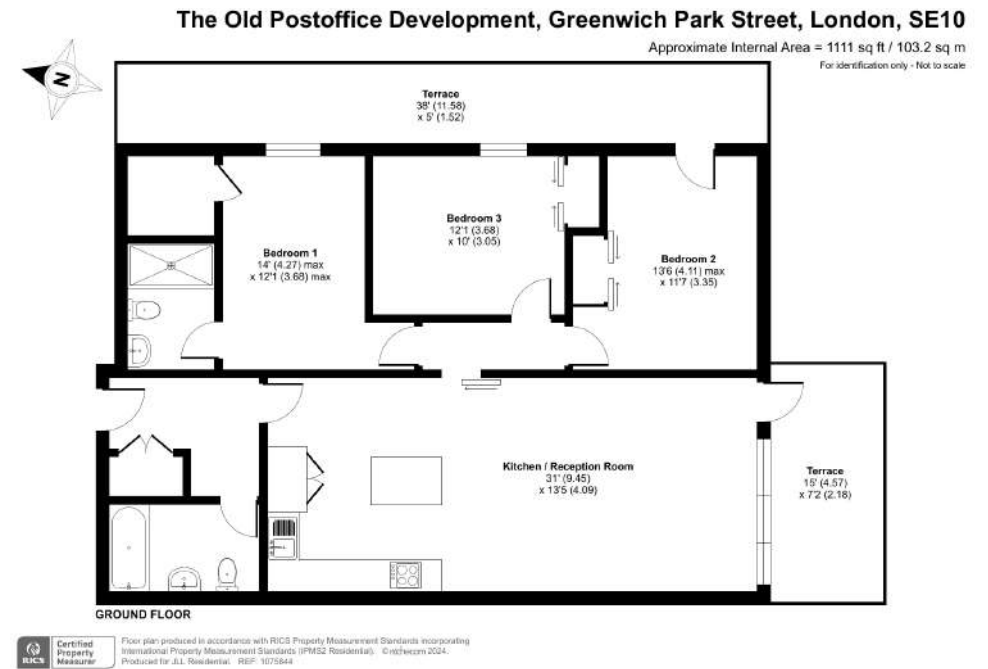
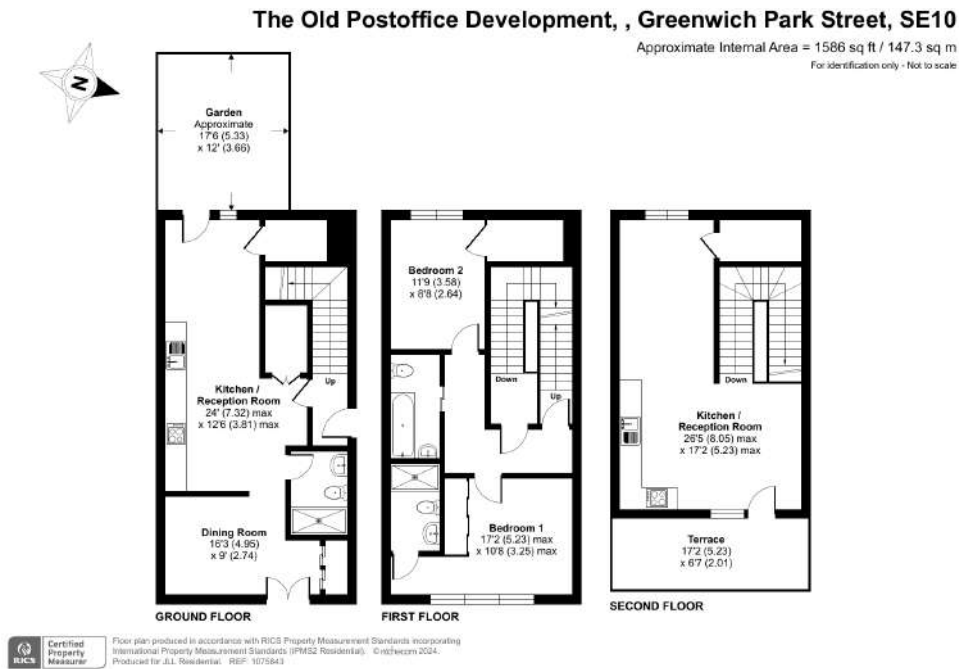
Prices from £780,000





Apartment One

Apartment Two



2 bed | 3 bath | Terrace & Garden - Grd, 1st & 2nd Floor

3 bed | 2 bath | Terrace - Grd Floor

1586 sq ft / 147.3 sq m

1111 sq ft / 103.2 sq m

Greenwich Park Street

Greenwich SE10

Apartment Three

The Old Postoffice, Greenwich Park Street, London, SE10

Approximate Internal Area = 916 sq ft / 85.9 sq m
For identification only - Not to scale



RICS Certified Property Measure Floor plan produced in accordance with RICS Property Measurement Standards incorporating International Property Measurement Standards (IPMS2 Residential). ©nbftecmm 2024. Produced for J.L. Residential. REF: 1075843

2 bed | 2 bath | Balcony - Grd Floor

916 sq ft / 85.9 sq m

Apartment Four

The Old Postoffice Development , Greenwich Park Street, London, SE10

Approximate Internal Area = 1200 sq ft / 111.5 sq m
For identification only - Not to scale



RICS Certified Property Measure Floor plan produced in accordance with RICS Property Measurement Standards incorporating International Property Measurement Standards (IPMS2 Residential). ©nbftecmm 2024. Produced for J.L. Residential. REF: 1075844

3 bed | 2 bath | Terrace - Lower Grd & Grd Floor

1200 sq ft / 111.5 sq m

Greenwich Park Street

Greenwich SE10

Apartment Five

The Old Postoffice Development, Greenwich Park Street, London, SE10

Approximate Internal Area = 1172 sq ft / 108.8 sq m
 Balcony = 99 sq ft / 9.1 sq m
 For identification only - Not to scale



Floor plan produced in accordance with RICS Property Measurement Standards incorporating International Property Measurement Standards (IPMS2 Residential). ©nbftecsm 2024. Produced for J.L. Residential. REF: 1075848

3 bed | 2 bath | Balcony - First Floor

1172 sq ft / 108.8 sq m

Apartment Six

The Old Postoffice Development, Greenwich Park Street, London, SE10

Approximate Internal Area = 1184 sq ft / 109.9 sq m
 Balcony = 116 sq ft / 10.7 sq m
 For identification only - Not to scale



Floor plan produced in accordance with RICS Property Measurement Standards incorporating International Property Measurement Standards (IPMS2 Residential). ©nbftecsm 2024. Produced for J.L. Residential. REF: 1075847

3 bed | 2 bath | Balcony - First Floor

1184 sq ft / 109.9 sq m

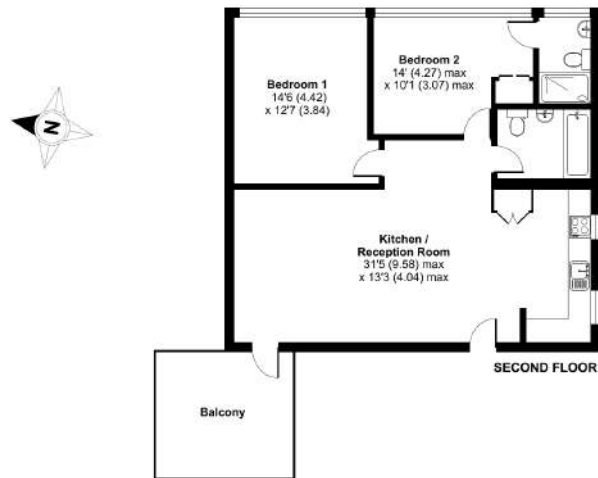
Greenwich Park Street

Greenwich SE10

Apartment Seven

The Old Postoffice Development, Greenwich Park Street, London, SE10

Approximate Internal Area = 883 sq ft / 82.3 sq m
For identification only - Not to scale



Floor plan produced in accordance with RICS Property Measurement Standards incorporating International Property Measurement Standards (IPMS2 Residential). © nbftecmm 2024. Produced for J.L. Residential. REF: 1075868

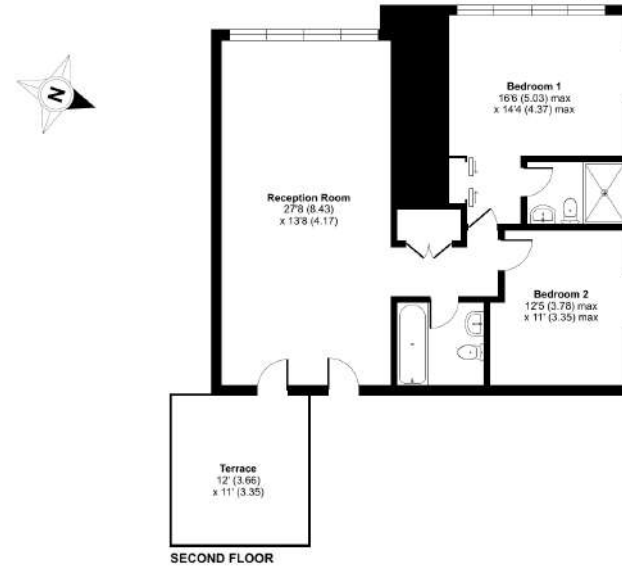
2 bed | 2 bath | Balcony - 2nd Floor

883 sq ft / 82.3 sq m

Apartment Eight

The Old Postoffice Development, Greenwich Park Street, SE10

Approximate Internal Area = 947 sq ft / 87.9 sq m
For identification only - Not to scale



Floor plan produced in accordance with RICS Property Measurement Standards incorporating International Property Measurement Standards (IPMS2 Residential). © nbftecmm 2024. Produced for J.L. Residential. REF: 1075869

3 bed | 2 bath | Terrace - 2nd Floor

947 sq ft / 87.9 sq m

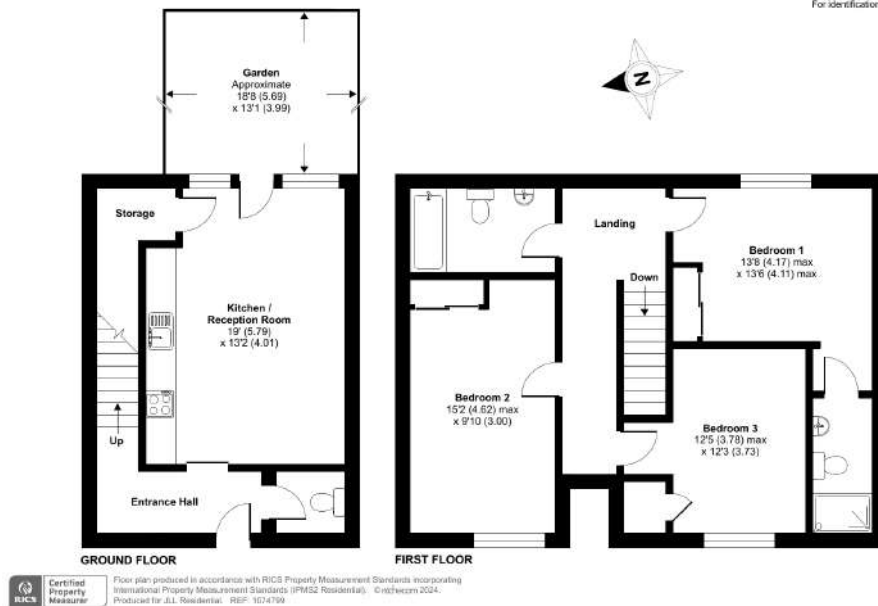
Greenwich Park Street

Greenwich SE10

Apartment Nine

The Old Postoffice Development, Greenwich Park Street, Greenwich, London, SE10

Approximate Internal Area = 1105 sq ft / 102.6 sq m
For identification only - Not to scale



3 bed | 2 bath | Garden - Grd & 1st Floor

1105 sq ft / 102.6 sq m

Greenwich Park Street

Greenwich SE10







Location



Cutty Sark DLR



Greenwich
mainline



City Airport



Thames Clipper

Old Sorting Office ☒ *Greenwich Park Street*

Greenwich SE10

Sales | Lettings | New homes | Property management

JLL Greenwich

22 College Approach
Greenwich
London
SE10 9HY
020 8858 9986

Urban living. your way.

jll.co.uk/residential

