



Poldo House, 24 Cable Walk, Greenwich, London SE10 0TQ



## **Poldo House, Cable Walk, Greenwich, SE10**

Leasehold (992 years remaining)

***This bright and spacious, 7th floor bathroom apartment which sits close to the Thames Path offering views of the river and a resident parking space, concierge and on-site gym.***

### **Key Features**

- 2 Double bedrooms
- 2 Bathrooms
- 2 Balconies
- Central Greenwich location
- Council Tax: D
- Service Charge: £3,457.20 p/a
- Ground Rent: £400 p/a
- EPC: B

The accommodation is beautifully presented throughout and comprises large entrance hall, open plan kitchen / reception room with leads onto a private balcony. Two double bedrooms, both with fitted wardrobes and the master with en-suite shower room and access onto a large balcony. There is also a separate utility room and family bathroom.

Greenwich benefits from excellent transport connections, making it easier for residents to explore London and beyond. The Greenwich DLR and National Rail Station provide easy access to key destinations such as Canary Wharf, the City of London, and Stratford. Additionally, the area is well-served by buses and river transport.















## Cable Walk, SE10

Approximate Gross Internal Area = 90.21 sq m / 971 sq ft

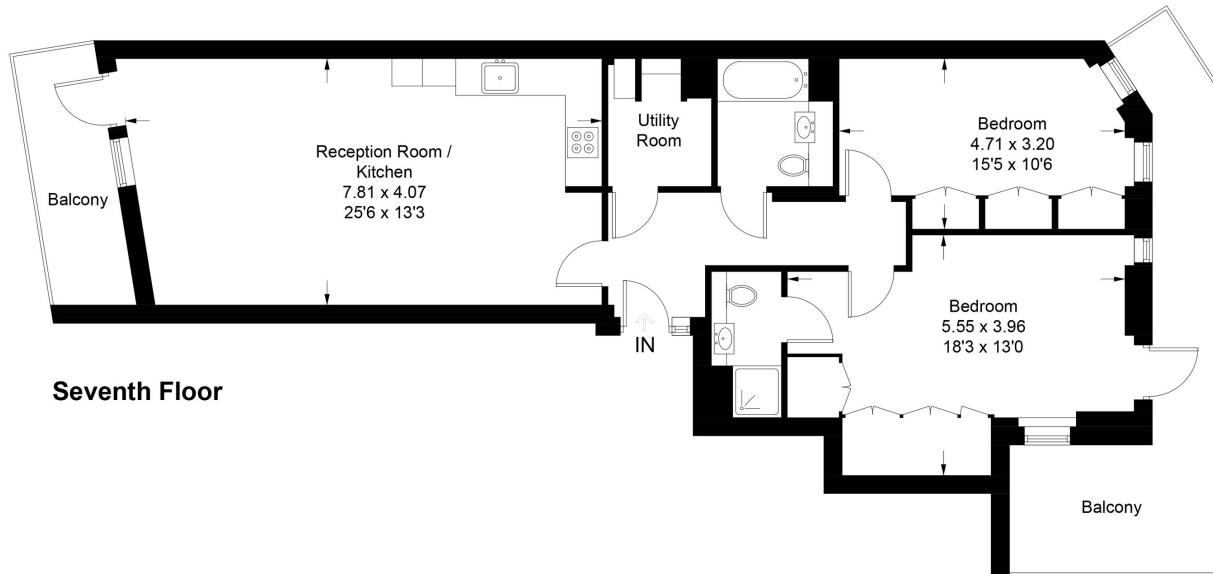


Illustration for identification purposes only, measurements are approximate,  
not to scale. floorplansUsketch.com © (ID1061660)

22 College Approach, Greenwich, London, SE10 9HY

Sales, Lettings & Property Management

Tel: 020 8858 9986

[residential.jll.co.uk](http://residential.jll.co.uk)

