



Park Row, Greenwich, London SE10 9NG



Park Row, Greenwich, London, SE10

Freehold

A charming Victorian period house in the heart of Central Greenwich, a short walk to mainline and DLR stations

Key Features

- 5 Bedrooms
- 1 Bathroom
- Excellent transport links
- In need of modernisation
- Walk to Royal Greenwich Park
- Local amenities close by
- No onward chain
- EPC: D

The Property

A charming five bedroom Victorian period house in the heart of Central Greenwich, a short walk to mainline and DLR stations and positioned on Park Row, a prominent road that graces the entrance of Royal Greenwich Park and the Maritime museum.

In need of modernisation throughout but offers 1,252 sq ft (116.3 sq m) of great accommodation over three floors together with a large (63 sq ft x 17 sq ft garden to the rear which is currently laid to lawn and a separate garden shed (outbuilding).





Accommodation

The accommodation offers 1,252 sq ft and begins on the ground floor two good sized reception rooms which are off the entrance hall, and a kitchen towards the back with access onto a large garden laid to lawn.

The first floor has two double bedrooms and a separate family bathroom and the top floor has another three bedrooms, two doubles and one single.

The property is in need of modernisation throughout and is offered to the market with no onward chain.

Outside

Transport options in Park Row and Greenwich are excellent. The development is well-connected by various public transport links, including Greenwich and Cutty Sark DLR stations, which offer easy access to Canary Wharf, the City of London, and other parts of the capital.

Greenwich is known for its rich history, impressive architecture, and tourist attractions and is situated on the south bank of the River Thames.

One of the main highlights of Greenwich SE10 is the Greenwich Maritime World Heritage Site, which includes the stunning Old Royal Naval College, the Queen's House, Greenwich Park, and the Royal Observatory. The Royal Observatory is particularly famous as the location of the Prime Meridian Line, where the world's time zones are measured from.

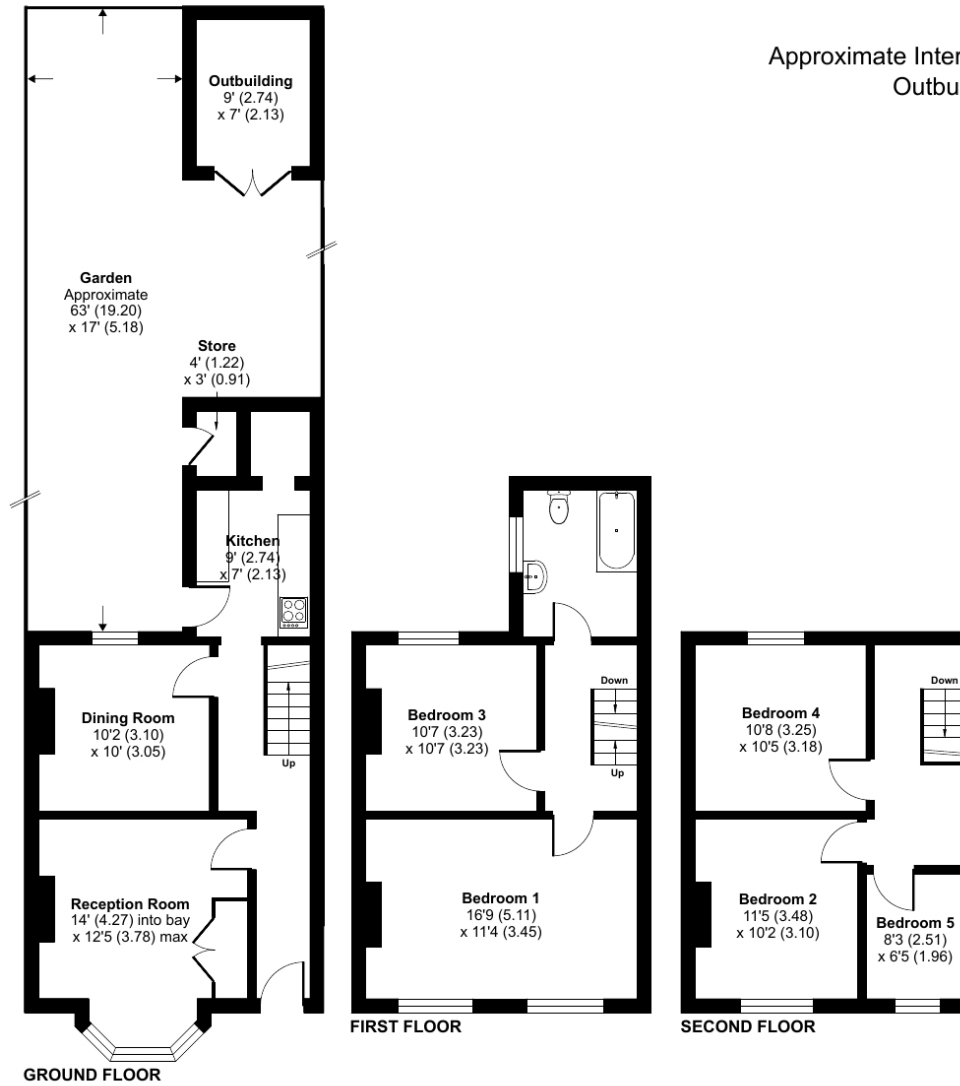
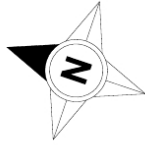
Greenwich is also home to the magnificent Cutty Sark, a restored 19th-century tea clipper ship, which now serves as a museum. The National Maritime Museum, another popular attraction in the area, showcases the maritime history of Britain and houses various maritime artifacts and exhibitions.











Park Row, SE10

Approximate Internal Area = 1252 sq ft / 116.3 sq m

Outbuilding & Store = 73 sq ft / 6.7 sq m

Total = 1325 sq ft / 123 sq m

For identification only - Not to scale



Floor plan produced in accordance with RICS Property Measurement Standards incorporating International Property Measurement Standards (IPMS2 Residential). © nchecom 2024. Produced for JLL Residential. REF: 1103797

22 College Approach, Greenwich, London, SE10 9HY

Sales, Lettings & Property Management

Tel: 020 8858 9986

residential.jll.co.uk

