



Old Sorting Office

GREENWICH PARK STREET, GREENWICH SE10



A selection of 9 contemporary 2 & 3 bedroom apartments located in the heart of Greenwich

Description

The Old Sorting Office in Greenwich, SE10 is a historic building with a rich heritage. It was originally built in the early 20th century as a sorting office for the Royal Mail. The building served as a central hub for sorting and distributing mail in and around the Greenwich area.

Located in the heart of Greenwich, the Old Sorting Office is a prime example of industrial architecture from the early 1900s. The exterior of the building features a distinctive red brick facade, large windows, and tall chimneys.

In recent years, the Old Sorting Office has been reimagined and transformed into a mixed-use development that combines commercial, residential, and cultural spaces. The building now offers a range of amenities, including offices, retail spaces, and community facilities.

The conversion of the Old Sorting Office has breathed new life into the area, providing a space for businesses to thrive while preserving the building's historical significance. The building's location in Greenwich is particularly appealing, as it is surrounded by a vibrant community and is within walking distance of many attractions, such as the Cutty Sark, the Royal Observatory, and Greenwich Park.

Overall, the Old Sorting Office in Greenwich, SE10 represents a successful blend of history, functionality, and modern design. It is a testament to the adaptive reuse of industrial buildings in urban settings, creating dynamic spaces that serve the needs of a contemporary community.

- 2 & 3 Bedroom Apartments
- 2 Bathrooms
- Converted in The Old Sorting Office
- Gardens, Terraces or Balconies
- Quality fixtures and fittings
- Integrated appliances
- Close to local amenities
- Walk to Cutty Sark and Greenwich
- Share of Freehold
- EPC: TBC

Prices from £780,000



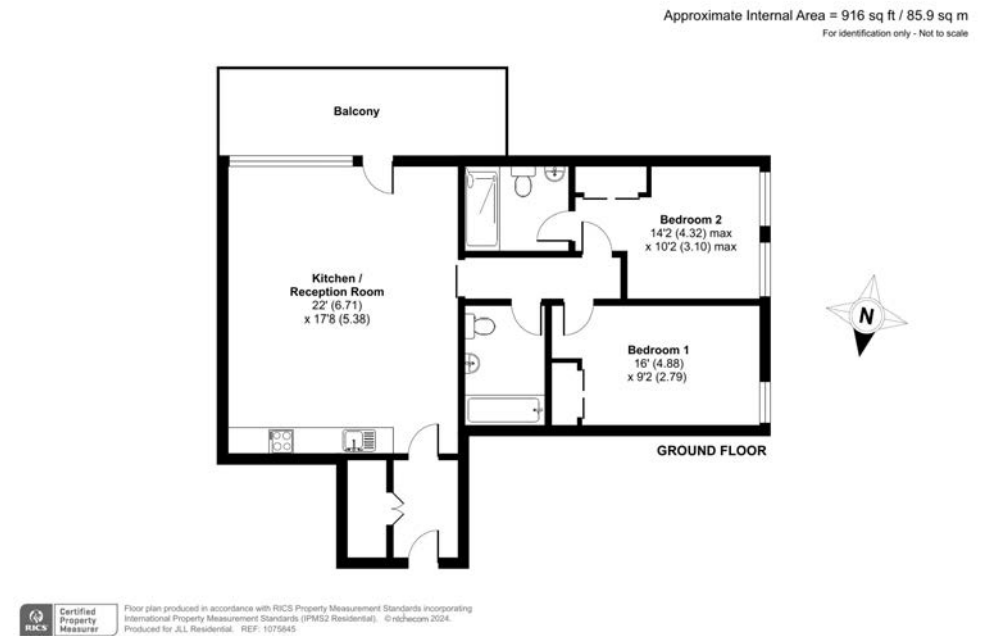
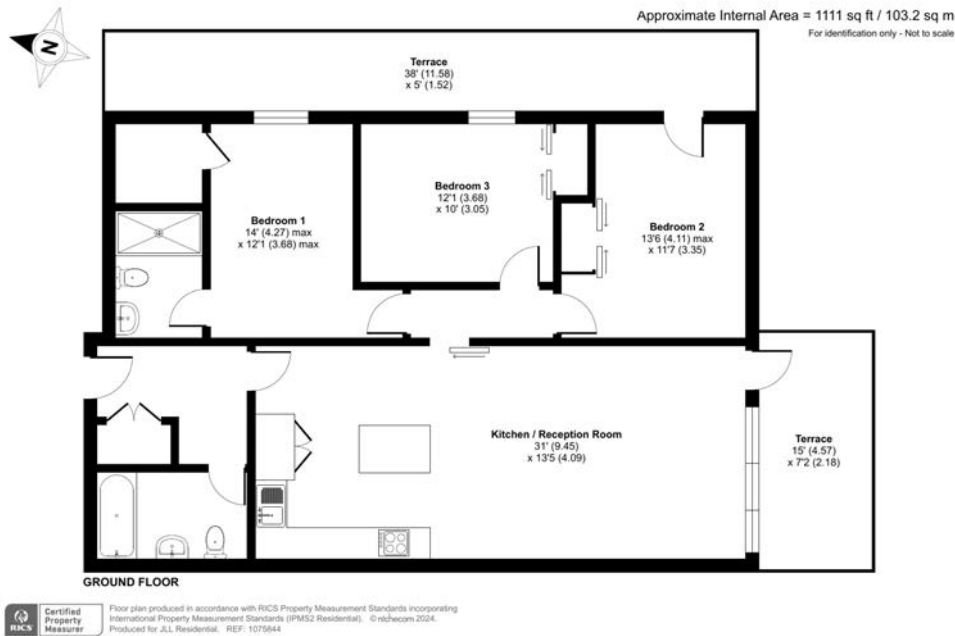
Old Sorting Office

Greenwich Park Street, Greenwich, SE10



Apartment One

Apartment Two



3 bed | 2 bath | Terrace - Ground Floor

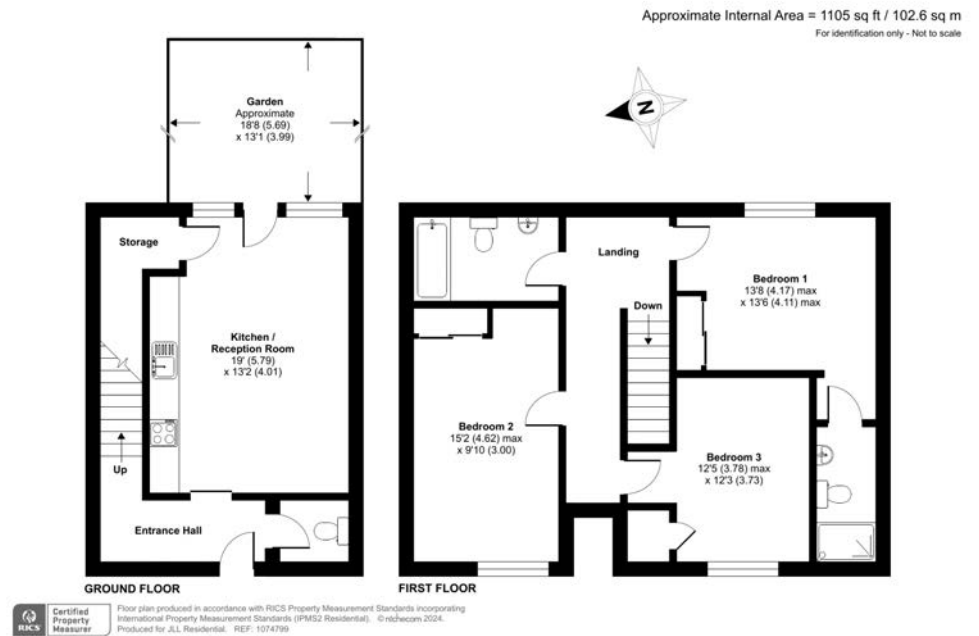
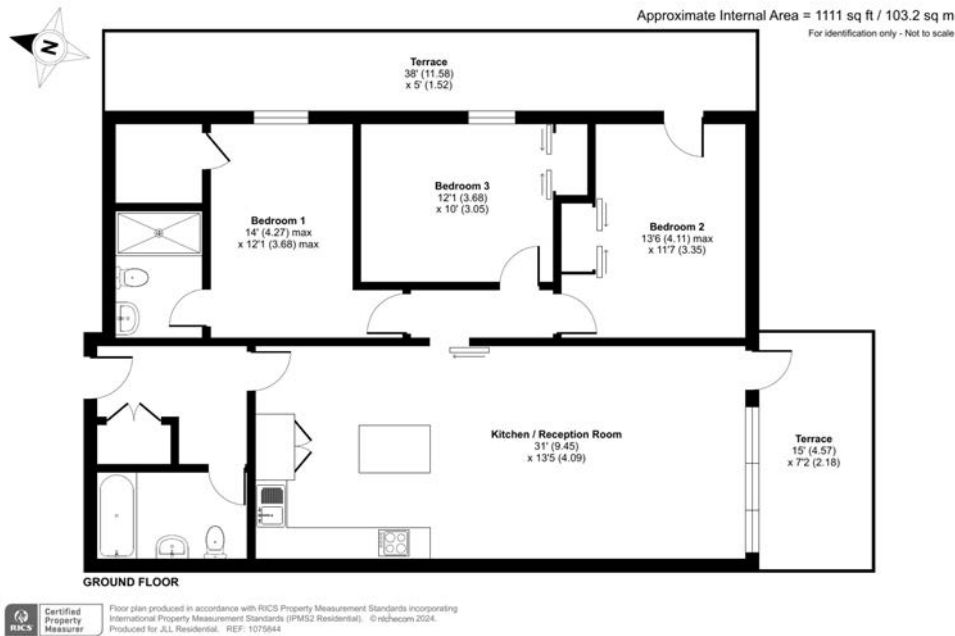
1111 sq ft / 103.2 sq m

2 bed | 2 bath | Balcony - Ground Floor

916 sq ft / 85.9 sq m

Apartment Three

Apartment Four



3 bed | 2 bath | Terrace - Ground Floor

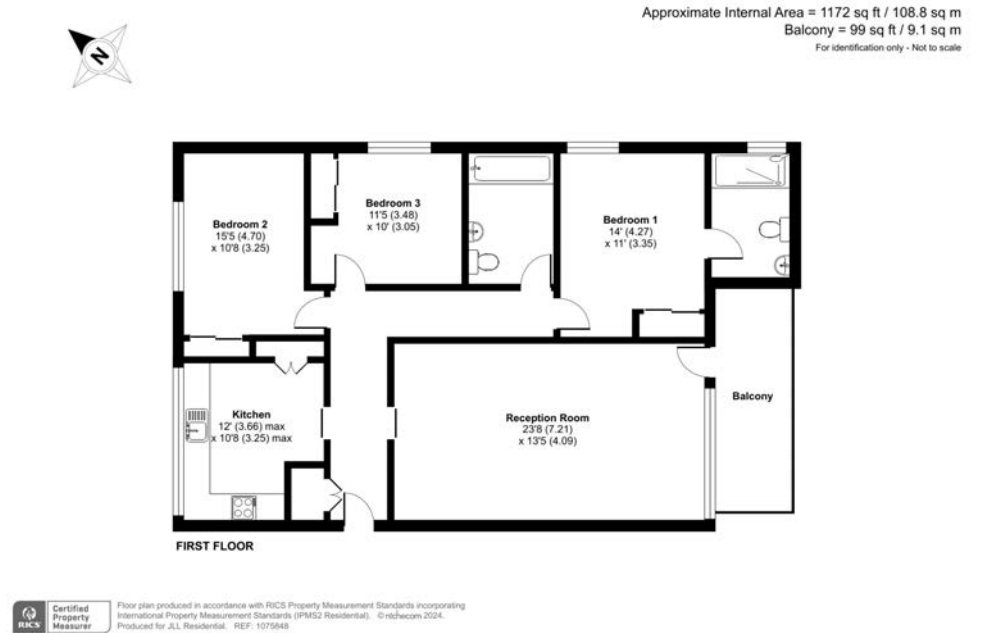
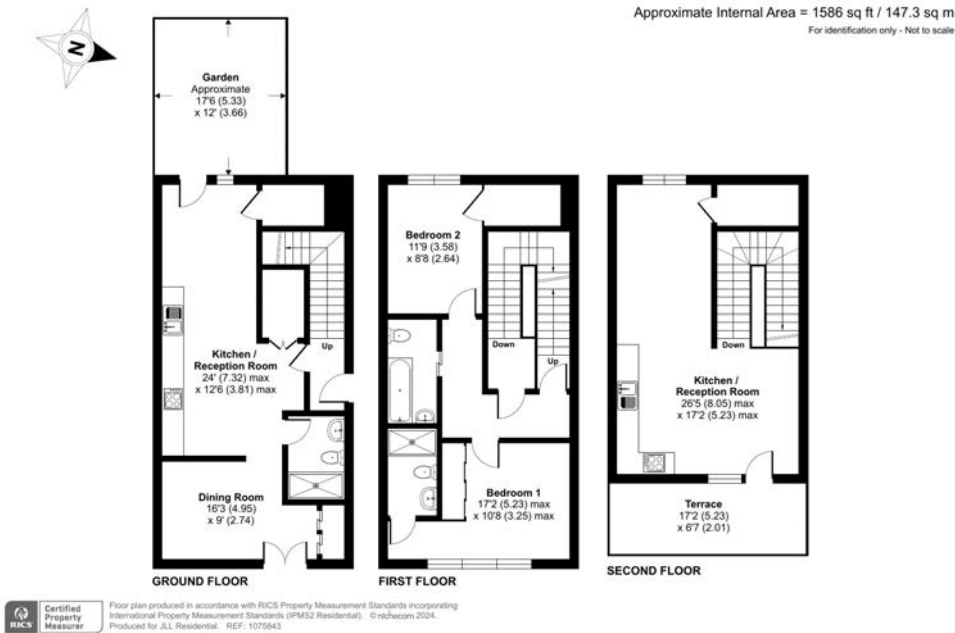
1111 sq ft / 103.2 sq m

3 bed | 2 bath | Garden - Ground Floor / First Floor

1105 sq ft / 102.6 sq m

Apartment Five

Apartment Six



2 bed | 3 bath | Garden - Ground, First & Second Floor

3 bed | 2 bath | Balcony - First Floor

1586 sq ft / 147.3 sq m

1172 sq ft / 108.8 sq m

Apartment Seven

Apartment Eight



Approximate Internal Area = 1184 sq ft / 109.9 sq m
Balcony = 116 sq ft / 10.7 sq m
For identification only - Not to scale



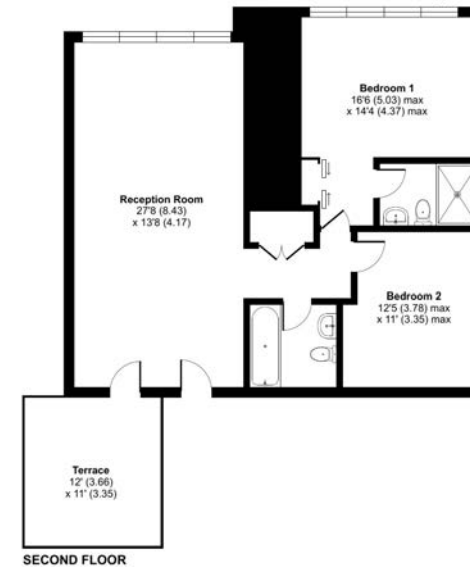
Floor plan produced in accordance with RICS Property Measurement Standards incorporating International Property Measurement Standards (IPMS2 Residential). © richcom 2024. Produced for J.L. Residential. REF: 1075847

3 bed | 2 bath | Balcony - First Floor

1184 sq ft / 109.9 sq m



Approximate Internal Area = 947 sq ft / 87.9 sq m
For identification only - Not to scale



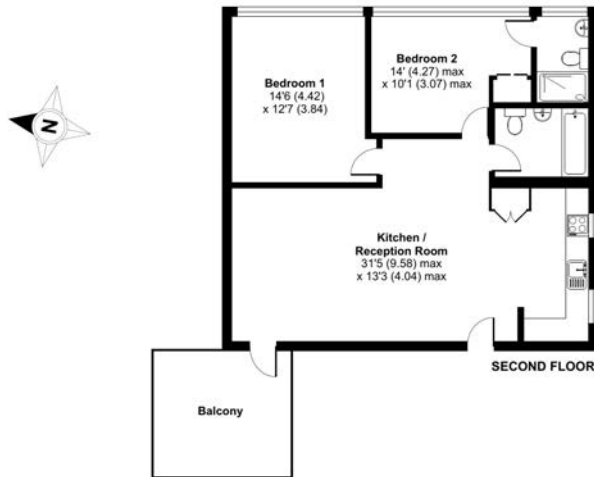
Floor plan produced in accordance with RICS Property Measurement Standards incorporating International Property Measurement Standards (IPMS2 Residential). © richcom 2024. Produced for J.L. Residential. REF: 1075849


3 bed | 2 bath | Terrace - Second Floor

947 sq ft / 87.9 sq m

Apartment Nine

Approximate Internal Area = 883 sq ft / 82.3 sq m
For identification only - Not to scale



 RICS Certified Property Measurer
Floor plan produced in accordance with RICS Property Measurement Standards incorporating International Property Measurement Standards (IPMS2 Residential). © rnh/acpm 2024. Produced for JLL Residential. REF: 1075850

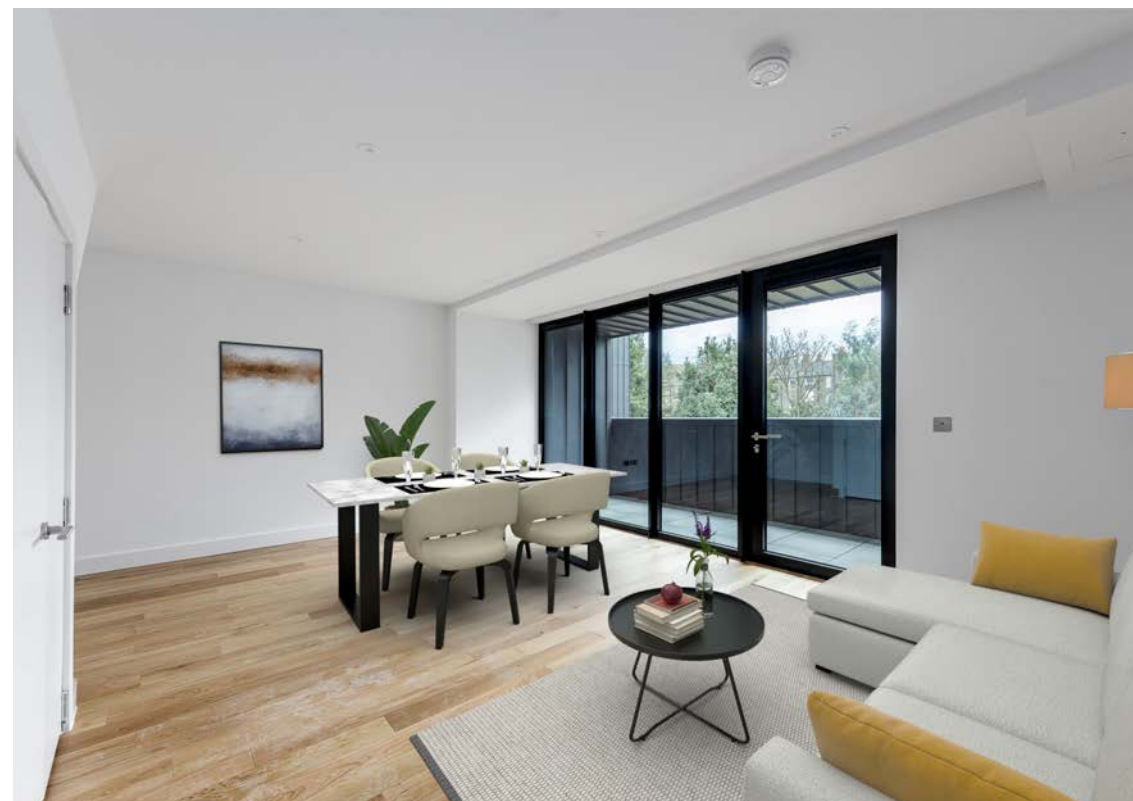
2 bed | 2 bath | Balcony - Second Floor

883 sq ft / 82.3 sq m



Greenwich Park Street

Greenwich SE10







Location



Cutty Sark DLR



Greenwich
mainline



City Airport



Thames Clipper

Old Sorting Office - Greenwich Park Street

Greenwich SE10

Sales | Lettings | New homes | Property management

JLL Greenwich

22 College Approach
Greenwich
London
SE10 9HY
020 8858 9986

Urban living, your way.

jll.co.uk/residential

