



Atrium Heights, Little Thames Walk, London SE8 3FB



## Atrium Heights, London, SE8

Leasehold (983 years remaining)

***A bright and spacious fifth floor, apartment situated in this stunning block close to Central Greenwich offering secure underground parking.***

### Key Features

- 1 Bedroom
- 1 Bathroom
- Private balcony
- Concierge services
- Council Tax: C
- Ground Rent: £250 p/a
- Service charge: £4,681 p/a
- EPC: B

---

A bright and spacious fifth floor, one bedroom apartment situated in this stunning block close to Central Greenwich offering a private balcony, secure underground parking and concierge services.

Accommodation measures approximately 592 sqft and comprises a spacious entrance hallway with built in storage, double bedroom with built in wardrobe, and an open plan kitchen/reception, offering direct access to a private balcony.

Atrium Heights is aptly named with an exceptionally attractive, planted communal atrium which offers very pleasant surroundings. The development is also a short walk from Greenwich, and the transport links, amenities, shops, bars and restaurants on offer.

Early viewings are highly recommended



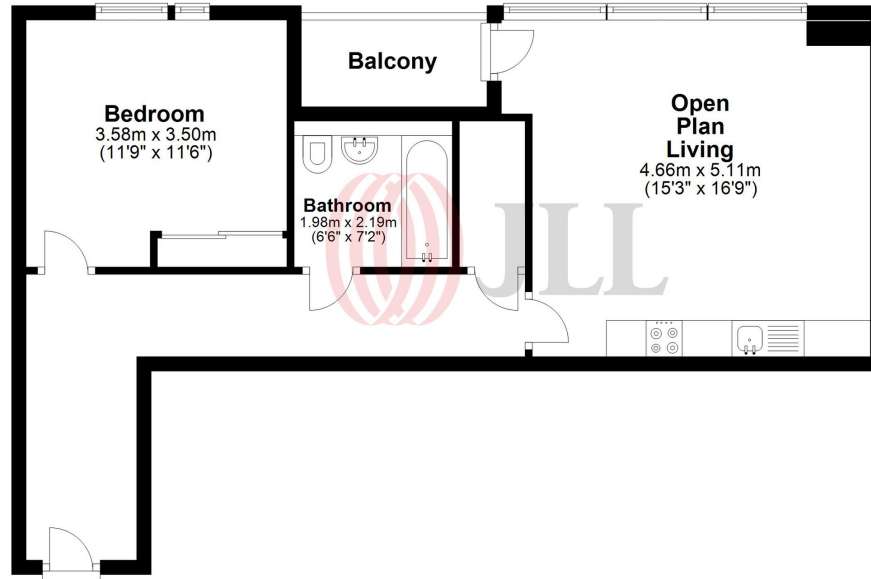






## Fifth Floor

Approx. 55.0 sq. metres (592.0 sq. feet)



Total area: approx. 55.0 sq. metres (592.0 sq. feet)

Floor Plan measurements are approximate and are for illustrative purposes only. While we do not doubt the floor plans accuracy, we make no guarantee, warranty or representation as to the accuracy and completeness of the floor plan.  
Plan produced using PlanUp.

22 College Approach, Greenwich, London, SE10 9HY

Sales, Lettings & Property Management

Tel: 0208 858 9986

[residential.jll.co.uk](http://residential.jll.co.uk)

