



Dundas Court, , Dowells Street, Greenwich, London SE10 9EA



## Dundas Court, Dowells Street, London, SE10

Leasehold (983 years remaining)

***A stunning 7th floor two bedroom apartment with allocated underground parking within the popular New Capital Quay development.***

### Key Features

- Allocated parking
- Riverside development
- Short walk from Cutty Sark DLR
- 24 Hour concierge
- Tax Band: E
- Service Charge: £2,400 p/a
- Ground Rent: £350 p/a
- EPC: B

---

### The Accommodation

Internally redesigned by the current owner, this property brings in character mixed with modern features which offers a complete different vibe to what you'd expect from a modern apartment.

The open plan kitchen has all the white goods integrated and the living-room is directly south facing which brings in a lot of natural light.

Both bedrooms benefit from built in wardrobes with additional storage in the hallway and a three piece family bathroom.





## Location

The riverside development is conveniently located within a short walk from the Cutty Sark DLR and Greenwich for both the DLR and mainline station both offering direct links to City, Westend and Canary Wharf and is being catered for by the 24 hour concierge service.

The property boasts close proximity to charming cafes, restaurants, and pubs, enhancing its appeal for potential residents. Notably, one of the largest Waitrose locations is conveniently situated just below the property, offering added convenience and accessibility.

Additionally, the property is nestled near the heritage-rich area of Greenwich, providing easy access to Greenwich Park, the Royal Observatory, vintage markets, the Cutty Sark, the Royal Naval College, and the Trinity Laban Conservatoire of Music and Dance. Moreover, residents have convenient access to Greenwich Pier for delightful boat rides to the city.

Dundas Court offers a mix of one, two and three bedroom apartments, providing options for individuals, couples and families. The apartments are well-designed and feature modern amenities and finishes.



## Sellers Comments

Discovering our first home was a journey that led us to Dundas Court, a residence that perfectly encapsulated what we envisioned for our family of three, including our small child. When my husband first acquired the property, it was perfect for a single man, boasting a blend of character and modernity that suited his lifestyle.

As a couple, Dundas Court continued to be an excellent choice for us, offering convenience and comfort in various ways. The nearby theatre, cafes, pubs, and restaurants provided us with avenues to enjoy each other's company without even venturing far from home. However, it wasn't until we welcomed our baby that we truly appreciated its value as a family home. Even during the challenging times of COVID-19, Dundas Court provided ease of access to hospitals and offered tranquil riverside walks that rejuvenated our spirits. It became clear that Dundas Court was a property designed to accommodate various stages of our lives. The thoughtful amenities, strategic location, and proximity to essential services made managing family life effortless.

Dundas Court wasn't just a property; it was a sanctuary where our family flourished, creating cherished memories. We hope the next family who calls Dundas Court home finds the same joy, comfort, and fulfillment that we did.



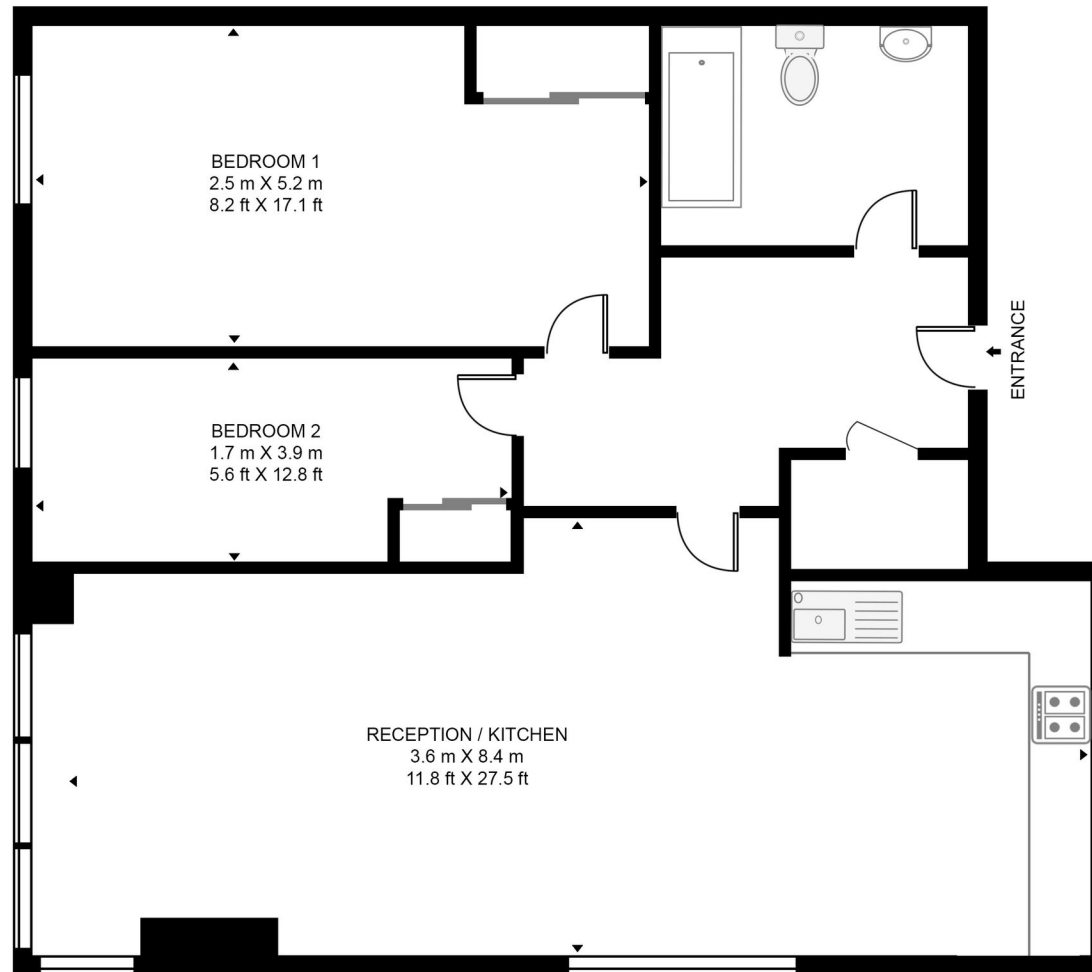








**DUNDAS COURT, 29 DOWELLS STREET**  
APPROXIMATE GROSS INTERNAL FLOOR AREA 638 SQ.FT (59.3 SQ.M)



This floor plan has been defined by the RICS Code of Measurement. This floor plan and all others are for approximate representative purposes only and upon usage is agreed to as such by the client.

WWW: [hdvirtualart.com](http://hdvirtualart.com) | TEL: 0203.974.1567 | EMAIL: [info@hdvirtualart.com](mailto:info@hdvirtualart.com)

22 College Approach, Greenwich, London,  
SE10 9HY

**Sales, Lettings & Property Management**

Tel: 020 8858 9986

[residential.jll.co.uk](http://residential.jll.co.uk)

