

Duke of Wellington Avenue, London SE18

Guide price £595,000 Leasehold





Description

This is a fantastic modern, two bedroom apartment with river views, located in the sought after Royal Arsenal development with concierge, gymnasium and beauty spa facilities for residence.

The property is just a stone throw away from Woolwich DLR and mainline station. The accommodation comprises lounge with a modern, open plan kitchen and integrated appliances, river view and large balcony. Two double bedrooms and a further luxurious bathroom with shower.

The property is available with no onward chain, early viewings are highly recommended.

- 2 Bedroom
- 1 Bathroom
- Large balcony with fabulous River Views
- 2nd Floor modern apartment
- 24 Hour Concierge
- Close to the Woolwich DLR and mainline
- Excellent finish, a must see
- No onward chain
- Approx 653 Sq Ft (60.7 sq m)
- EPC: B

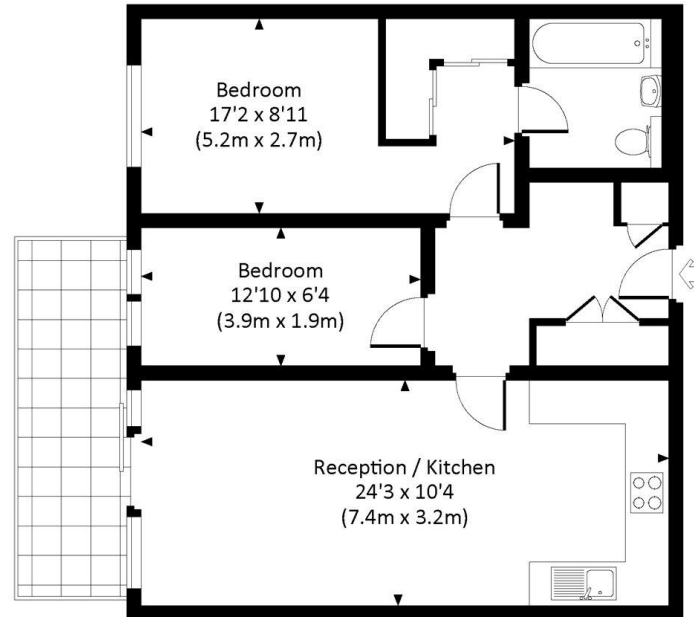


Floorplan

653 sq ft | 61 sq m

HAMPTON APARTMENTS,
DUKE OF WELLINGTON AVENUE, SE18

Approx. gross internal area
653 Sq Ft. / 60.7 Sq M.



SECOND FLOOR

All measurements have been made in accordance with RICS Code of Measuring Practice which are approximate only and only for illustrative purposes. For the avoidance of doubt, Dowling Jones Design shall not be liable for any reliance on these measurements. © 2017 www.dowlingjones.com 020 7610 9933

Greenwich
22 College Approach,
London SE10 9HY
02088589986
Greenwich.Sales@eu.jll.com

Urban living, your way.

jll.co.uk/residential

© 2019 Jones Lang LaSalle IP, Inc. All rights reserved. All information contained herein is from sources deemed reliable; however, no representation or warranty is made to the accuracy thereof.

