



Shooters Hill Road, Blackheath, London SE3 8RL



## Shooters Hill Road, Blackheath, SE3 8RL

### Leasehold

*This simply stunning converted two bedroom apartment situated on the first floor of this period house within a short walk from the amenities of Blackheath Village.*

### Key Features

- 2 Double bedrooms
- 1 Bathroom
- 1st Floor period apartment
- Walk to Blackheath Village
- Close to Royal Greenwich Park
- off street parking
- Blackheath mainline station
- EPC: D

The accommodation is light and bright throughout and comprises entrance hall, separate reception room with period fireplace, separate beautifully fitted kitchen. Two good sized bedrooms and a shower room.

The property further benefits from off street parking to the front.

Shooters Hill Road is well located close to The Heath and Royal Greenwich Park and great transport links directly into London City, Canary Wharf and West End.

Early viewings are highly recommended.







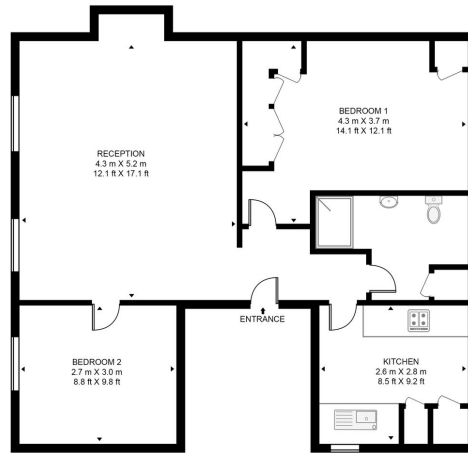






**SHOOTERS HILL ROAD**

APPROXIMATE GROSS INTERNAL FLOOR AREA 745 SQ.FT (69.2 SQ.M)



FIRST FLOOR



This floor plan has been defined by the RICS Code of Measurement. This floor plan and all others are for approximate representative purposes only and upon usage is agreed to as such by the client.  
WWW: [hdvstart.com](http://hdvstart.com) | TEL: 0203 914 1987 | EMAIL: [info@hdvstart.com](mailto:info@hdvstart.com)

22 College Approach,  
Greenwich, SE10 9HY

**Sales, Lettings & Property Management**

Tel: 020 8858 9986

**[residential.jll.co.uk](http://residential.jll.co.uk)**

