



Sloane Gardens, London SW1W

Price £1,650 per week - Unfurnished







Description

An elegant 2 bedroom flat situated on the second and third floor on a quiet sought after tree lined street minutes from Sloane Square tube station and fashionable Kings Road. The property has been recently refurbished throughout to a high standard and features full air conditioning, underfloor heating and a full width private roof terrace with its own outside kitchen.

The property consists of reception room, two double bedrooms, master with en suite and a separate bathroom, a fully fitted Poggenpohl kitchen and a private roof terrace with separate kitchen for entertaining. Full air conditioning and underfloor heating.

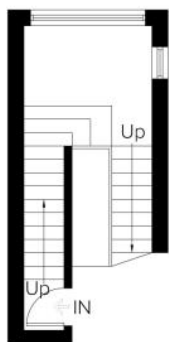
Council tax band: H. Rent is payable on a monthly basis and you may be required to pay more than a month's rent in advance, depending on your circumstances. You will be required to pay a 1 week holding deposit following a successful offer. Tenancies with annual rents up to £50,000 will require a 5 weeks' security deposit, while those exceeding this threshold will require a 6 weeks' deposit. Utility bills, council tax, telephone line and broadband are not included in the rent. As well as paying the rent, you may also be required to make some additional permitted payments. If your tenancy does not qualify as an AST, additional fees may apply. Please visit jll.co.uk/fees for details of fees that may be payable when renting a property. To check broadband and mobile phone coverage please visit Ofcom here ofcom.org.uk/phones-telecoms-and-internet/advice-for-consumers/advice/ofcom-checker

- 2 bedrooms one with en suite
- Bathroom
- Reception room
- Fully fitted kitchen
- Private roof terrace
- Underfloor heating
- Air conditioning
- Second and third floor
- Approx. 1078 sq ft (100 sq m)
- EPC: D

Floorplan

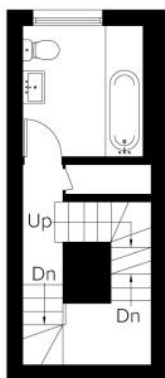
sq ft | sq m

Approximate Area = 100.2 sq m / 1078 sq ft
Including Limited Use Area (1.4 sq m / 15 sq ft)



First Floor

Area = 9.9 sq m / 106 sq ft
(Limited Use Area = 0.3 sq m / 3 sq ft)



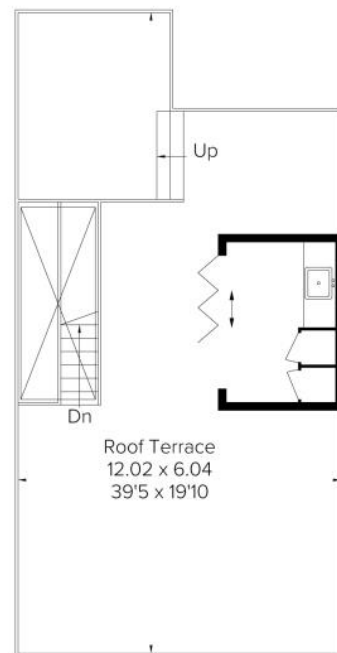
Second Floor

Area = 15.4 sq m / 166 sq ft
(Limited Use Area = 0.1 sq m / 1 sq ft)



Third Floor

Area = 68.8 sq m / 740 sq ft
(Limited Use Area = 1 sq m / 11 sq ft)



Fourth Floor

Area = 6.1 sq m / 66 sq ft

Surveyed and drawn in accordance with the International Property Measurement Standards (IPMS 2: Residential)
fourwalls-group.com 246759

Chelsea
2 Cale Street,
London SW3 3QU
+4420 7399 5010
saleschelsea@jll.com

Urban living, your way.

jll.co.uk/residential

© 2019 Jones Lang LaSalle IP, Inc. All rights reserved. All information contained herein is from sources deemed reliable; however, no representation or warranty is made to the accuracy thereof.

