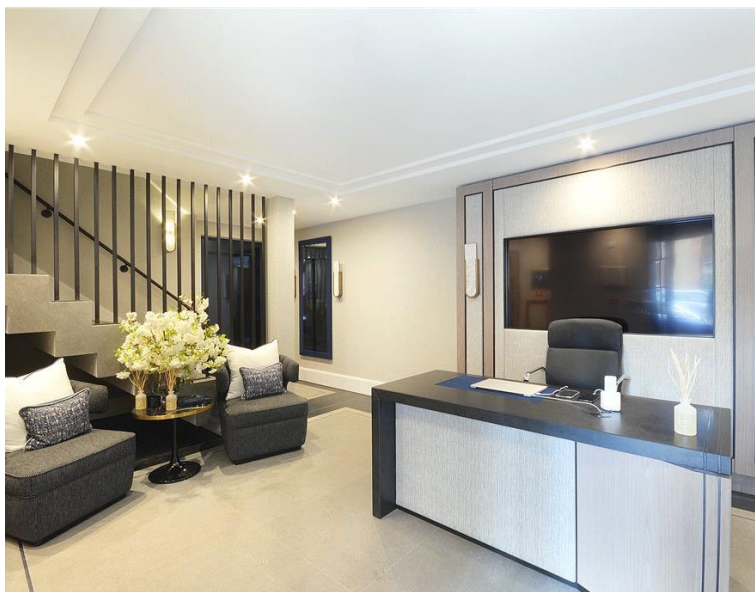


Cresswell Gardens, London SW5

Price £675 per week - Furnished







Description

Nestled in the heart of South Kensington, this beautifully furnished one-bedroom apartment forms part of One Brompton, a stunning development that epitomises contemporary London living. The property benefits from an impressive day concierge service, lift access to all floors, comprehensive CCTV security system and audio visual entry system, ensuring both convenience and peace of mind for residents.

The apartment itself has been thoughtfully designed with modern comfort in mind, featuring comfort cooling and heating in the reception room, alongside luxurious underfloor heating to the shower room and hallway. The premium furnished specification creates an immediate sense of home, perfect for professionals seeking a sophisticated base in one of London's most coveted neighbourhoods.

Transport connections are exceptional, with Gloucester Road and South Kensington stations providing swift access across the capital via the Circle, District and Piccadilly lines. The boutique shopping of King's Road, the international dining scene of Knightsbridge, and the financial districts are all within easy reach.

This exceptional apartment offers the perfect combination of co

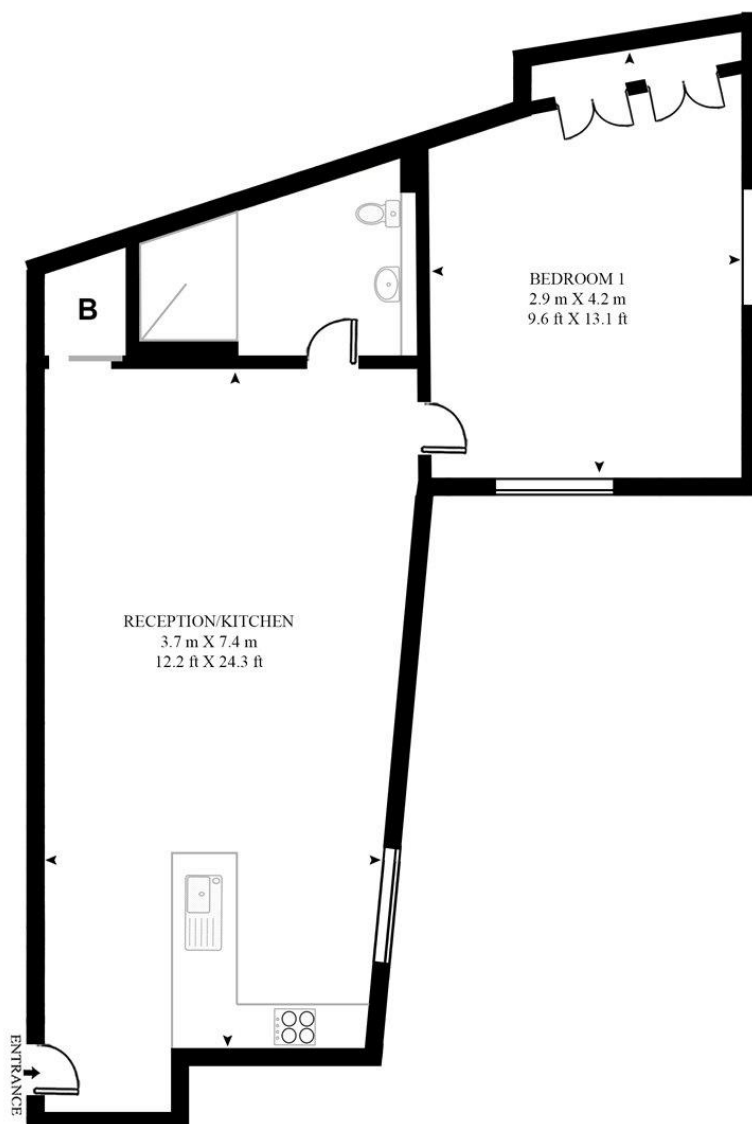
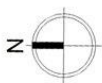
- 1 Double bedroom
- 1 Shower room
- Reception room
- Open plan kitchen with seating area
- Second floor
- Lift
- Day concierge service
- Approx. 480 sq ft (44 sq m)
- Furnished
- EPC: B

Floorplan

480 sq ft | 45 sq m

CRESSWELL GARDENS

APPROXIMATE GROSS INTERNAL FLOOR AREA 480 SQ.FT (44.6 SQ.M)



HDVA

This floor plan has been defined by the RICS Code of Measurement. This floor plan and all others are for approximate representative purposes only and upon usage is agreed to as such by the client.

WWW: hdvirtualart.com | TEL: 0203.974.1567 | EMAIL: info@hdvirtualart.com

Chelsea
2 Cale Street,
London SW3 3QU
+4420 7399 5010
saleschelsea@jll.com

Urban living, your way.

jll.co.uk/residential

© 2019 Jones Lang LaSalle IP, Inc. All rights reserved. All information contained herein is from sources deemed reliable; however, no representation or warranty is made to the accuracy thereof.

