



Ovington Square, SW13



A charming third floor flat (no lift) in this period building in the heart of Knightsbridge.

The property consists of one double bedroom, one shower room, a bright open plan kitchen / dining and reception room with views over the garden square. Further benefits include wooden flooring in the reception room and a separate room / office with a window on the half landing measuring 64 SqFt, bringing the total floor area to 544 SqFt.

Ovington Square



Ovington Square

LOCATION

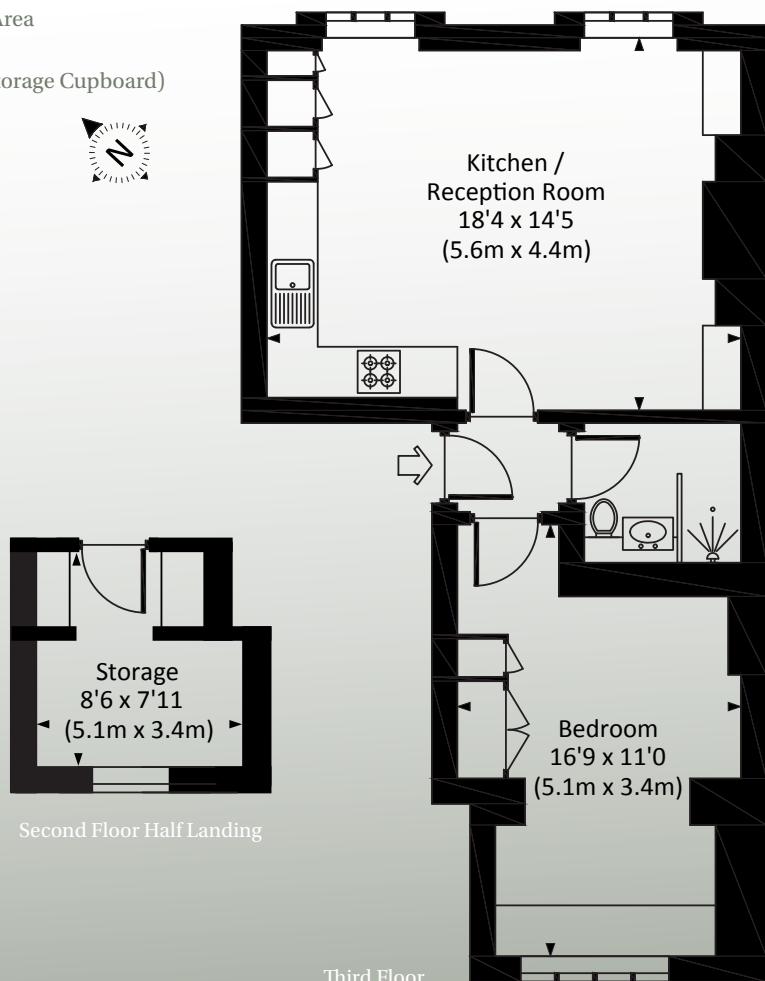
Ovington Square is a garden square approximately 350 metres from Harrods, just off the Brompton Road. Knightsbridge and South Kensington tube stations are both within 750 metres, while Hyde Park is 800 metres away.



Approximate Gross Internal Area

480 Sq Ft. / 44.6 Sq M.

544 Sq Ft. / 50.5 Sq M. (Inc. Storage Cupboard)



Second Floor Half Landing

Third Floor

TERMS

Tenure: 979 year Leasehold (expires: 4th February 3004) plus Share of Freehold

Local Authority: Royal Borough of Kensington & Chelsea

Ground Rent: Peppercorn

Service Charge: £4,573.20 per annum

Council tax band: F

EPC: E

ASKING PRICE £795,000

JLL Chelsea

2 Cale Street

London, SW3 3QU

020 7399 5010



These particulars are for general information only and do not constitute any part of an offer or contract. All statements contained therein are made without responsibility on the part of the vendors or lessors and are not to be relied upon as statement or representation of fact. Intending purchasers or lessees must satisfy themselves, by inspection, or otherwise, as to the correctness of each of the statements or dimensions contained in these particulars.